

THE FIELD DATA UPON WHICH THIS PLAT IS BASED HAS A CLOSURE OF 1 FOOT IN 23,162 FEET, AN ANGULAR ERROR OF 0 SECONDS PER ANGLE POINT AND WAS ADJUSTED USING THE LEAST SQUARES METHOD. THIS PLAT HAS BEEN CALCULATED FOR CLOSURE AND FOUND TO BE ACCURATE TO 1 FOOT IN 150,546 FEET. AN ELECTRONIC TOTAL STATION AND A 100' CHAIN WERE USED TO GATHER THE INFORMATION USED IN THE PREPARATION OF THIS PLAT. NO N.G.S. MONUMENT WAS FOUND WITHIN 500 FEET OF THIS PROPERTY. THIS PLAT WAS PREPARED FOR THE EXCLUSIVE USE OF THE PERSON, PERSONS OR ENTITY NAMED HEREON. THIS PLAT DOES NOT EXTEND TO ANY UNNAMED PERSON, PERSONS, OR ENTITY WITHOUT EXPRESS RECERTIFICATION BY THE SURVEYOR NAMING SAID PERSON, PERSONS OR ENTITY. THESE DOCUMENTS, AS INSTRUMENTS OF SERVICE REMAIN THE PROPERTY OF FRONTLINE SURVEYING & MAPPING, INC. AND NO PART THEREOF MAY BE USED, COPIED OR REPRODUCED IN ANY FORM WITHOUT WRITTEN PERMISSION. COPYRIGHT ©2021 FRONTLINE SURVEYING AND MAPPING, INC.. *** ALL MATTERS PERTAINING TO TITLE ARE EXCEPTED ***

LEGEND:

IPS	IRON PIN SET	⊕	BOLLARD
IPF	IRON PIN FOUND	⊗	CONCRETE MONUMENT FOUND
OT	OPEN TOP PIN	—Z—	OVERHEAD UTILITY LINE(S)
CT	CRIMP TOP PIN	SMH	SANITARY SEWER MAN HOLE
RB	REINFORCING BAR	DWCB	CATCH BASIN
CRB	CAPPED RE-BAR	JB	JUNCTION BOX
CL	CENTERLINE	DI	DROP INLET
R/W	RIGHT-OF-WAY	HW	HEAD WALL
LLL	LAND LOT	CMP	CORRUGATED METAL PIPE
CONC	CONCRETE	CP	CORRUGATED PLASTIC PIPE
PP	POWER POLE	RCP	REINFORCED CONCRETE PIPE
LP	LAMP POLE	SSE	SANITARY SEWER EASEMENT
SS	SANITARY SEWER	FH	FIRE HYDRANT
FC	FENCE CORNER	DE	DRAINAGE EASEMENT
X	FENCE	WV	WATER VALVE
AE	ACCESS EASEMENT	WM	WATER METER
PROP	PROPOSED	CO C/O	SANITARY SEWER CLEANOUT
AG	AIR-CONDITIONER	POB	POINT OF BEGINNING
NTS	NOT TO SCALE	SWCB	SINGLE WING CATCH BASIN
		UE	UTILITY EASEMENT

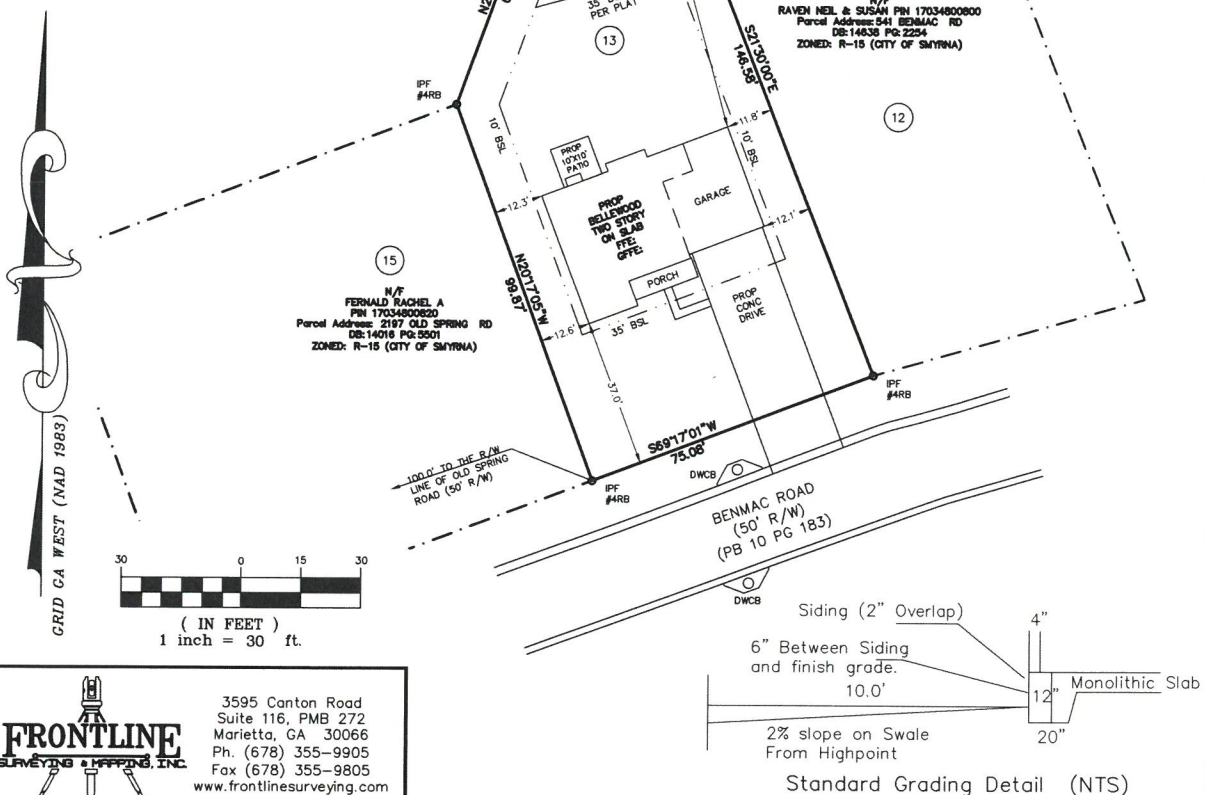
HOUSE LOCATION PLAN FOR:

GREEN HILLS S/D LOT 13

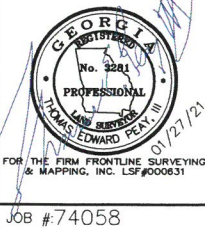
BENMAC DRIVE
LAND LOT 348
17th DISTRICT; 2nd SECTION
COBB COUNTY, GEORGIA
EXISTING ZONING: R-15 (CITY OF SMYRNA)
PIN: 17034800810
9,886 SQ. FT.
0.23 ACRES

NOTE:1 BOUNDARY SURVEY BY LARRY D. NEESE RLS NO 2235
FOR TOMMY TURNER INC., RECORDED IN
DEEDBOOK 13503 PAGE 1704, COBB COUNTY
CLERK OF SUPERIOR COURT.

ZONING: R-15 (CITY OF SMYRNA)
MIN LOT SIZE: 15,000 SQ FT
LOT COVERAGE: 35%
LOT WIDTH AT SETBACK: 85'
FRONT SETBACK: 35'
SIDE SETBACK: 10'
REAR SETBACK: 30'
MAX BUILDING HEIGHT: 35'



3595 Canton Road
Suite 116, PMB 272
Marietta, GA 30066
Ph. (678) 355-9905
Fax (678) 355-9805
www.frontlinesurveying.com



HOUSE LOCATION PLAN FOR:

BARC HOLDINGS, LLC

DATE 01/27/21

SCALE 1" = 30'

LAND LOT 348	17TH DISTRICT	2ND SECTION	COBB COUNTY, GEORGIA
SUBDIVISION GREEN HILLS SUBDIVISION	PHASE:	SECTIONS	PB 10 PG 183
LOT(S) 13	REVISION:	BY:	DATE:
I HAVE THIS DATE, EXAMINED THE "FIA OFFICIAL FLOOD HAZARD MAP" AND FOUND REFERENCED PARCEL (●) (IS NOT) IN AN AREA HAVING SPECIAL FLOOD HAZARDS.			
MAP ID 13067C0118J	EFFECTIVE DATE: 10/5/2018		