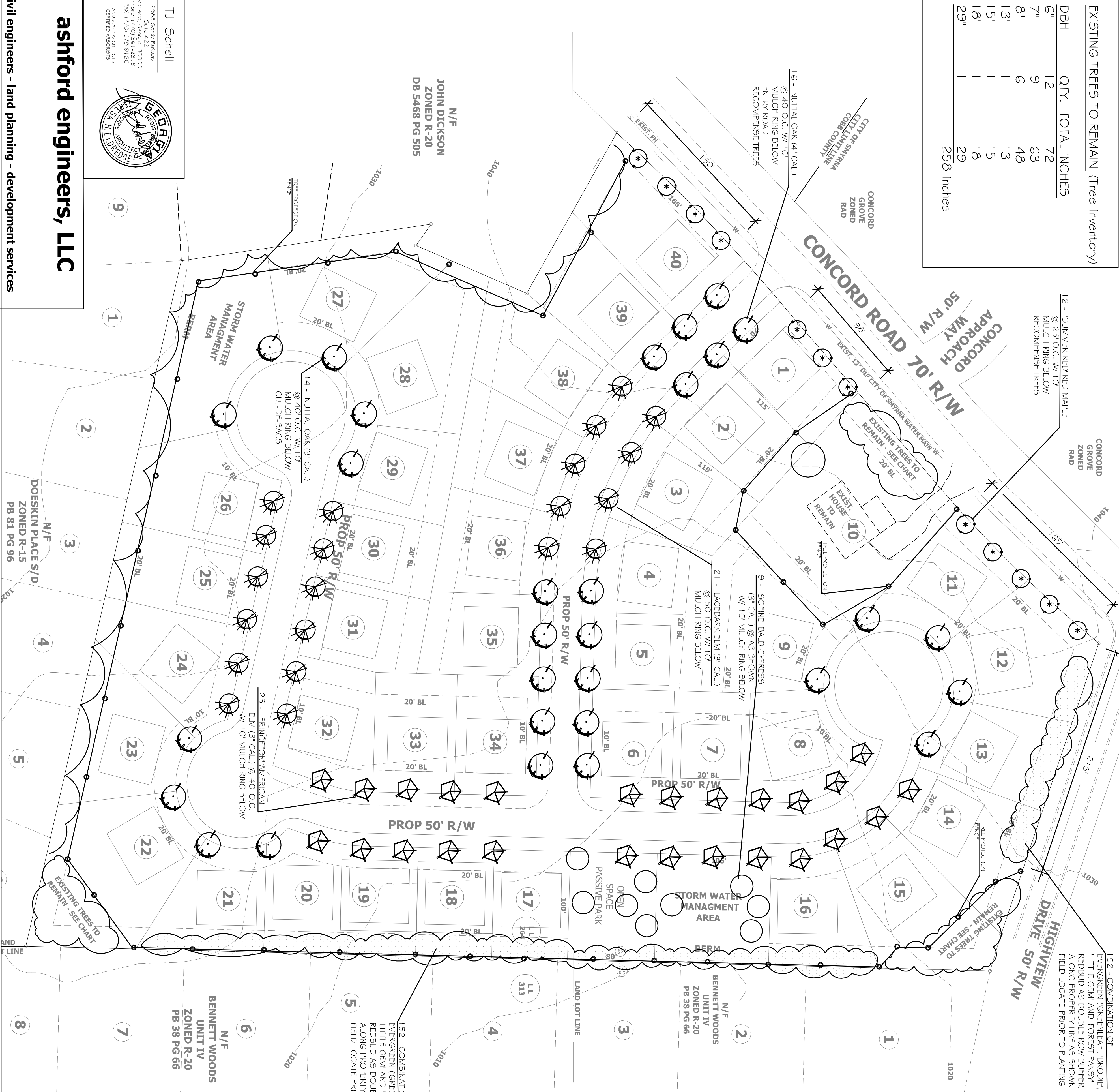


EXISTING TREES TO REMAIN (Tree Inventory)		
DBH	QTY.	TOTAL INCHES
6"	12	72
7"	9	63
8"	6	48
13"	1	13
15"	1	15
18"	1	18
29"	1	29
		258 inches



REPLACEMENT INCHES CALCULATIONS:

Total Acreage = 12.12 AC
SDF = EDF + RDF
MINUS ROW 2.27 AC. & DETENTION .58 AC.
SDF = 12.12 - 2.85 = 9.27 x 100" per Acre
= 927" Required
100 Recompense inches required
(See Sht. T-1)

EDF = 258 Inches to remain on site
RDF = 775 Total Inches Provided

SDF = 1033 Inches (Includes 4" Recompense
Trees)

Therefore: Density Satisfied

ROAD FRONTAGE CALCULATIONS:

Total Road Frontage Concord Rd. = 413'
413' / 35 (1 Tree per 35) = 11.8 Trees Required

(12) Trees Provided

Total Road Frontage Highway = 215'
215' / 35 (1 Tree per 35) = 6.14 Trees Required

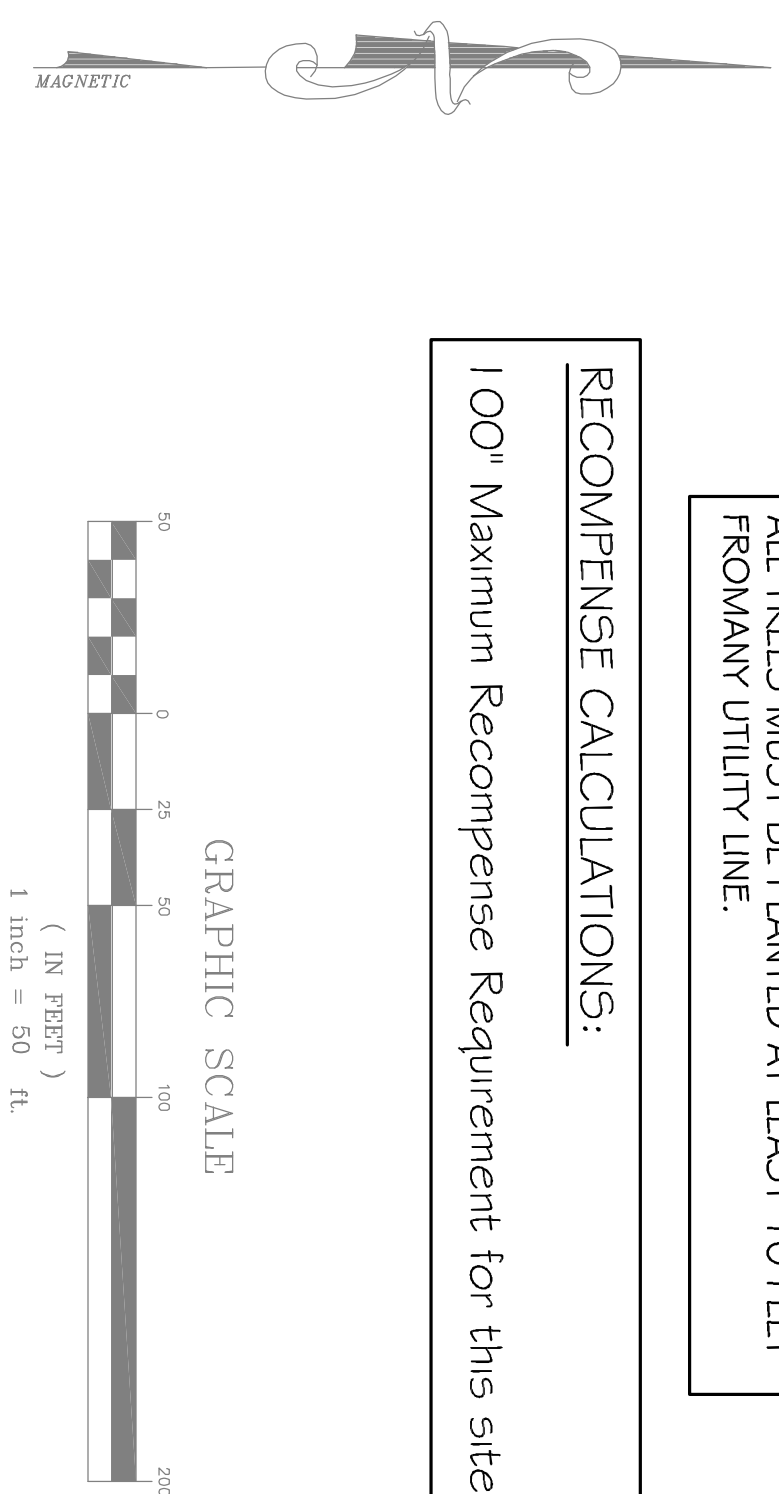
(7) Trees Provided (Understory due to OHP)

PLANT LIST	MIN.	MIN.	RECOMP.		COMMENTS
QTY COMMON NAME/BOTANICAL NAME	SIZE/	SPACE	INCHES	INCHES	
36 Greenleaf Holly	Ilex opaca Greenleaf	3" cal. (8-10" HT.) 100 C.	114	16	Full to Ground, Healthy, Good Form
36 Forest Pansy Redbud	Cercis canadensis Forest Pansy	3" cal. (Standard) 150 C.	114		Straight single leader, Healthy, Good Form
36 Little Gent Magnolia	Magnolia grandiflora Little Gent	3" cal. (8-10" HT.) 150 C.	114	16	Full to Ground, Healthy, Good Form
36 Brocade Red Cedar	Juniperus virginiana Brocade	3" cal. (8-10" HT.) 120 C.	114		Full to Ground, Healthy, Good Form
9 'Sofie' Bald Cypress	Taxodium distichum 'Sofie'	3" cal. 250 C.	27		Single straight leader, Good Form, Healthy
14 Nuttall Oak	Quercus nuttalli	3" cal. 30" O.C.	42		Single straight leader, Good Form, Healthy
21 Lacebark Elm	Ulmus parvifolia	3" cal. 35" O.C.	63		Single straight leader, Good Form, Healthy
25 'Pinckton' American	Ulmus americana	3" cal. 35" O.C.	75		Single straight leader, Good Form, Healthy
12 'Summer Red' Red	Acer rubrum	4" cal. 35" O.C.	48		Single straight leader, Good Form, Healthy
6 Nuttall Oak	Quercus nuttalli	4" cal. 35" O.C.	64		Single straight leader, Good Form, Healthy

663 + 112 = 775" Total Provided)

ALL TREES MUST BE PLANTED AT LEAST 10 FEET FROM ANY UTILITY LINE.

RECOMPENSE CALCULATIONS:



ashford engineers, LLC

civil engineers - land planning - development services

LONDON PATTERSON
ENGINEERING SUPPORT SERVICES
3350 ATLANTA ROAD
SMYRNA, GA 30080
770-874-6365

ACTIVITY	NAME
DESIGNED BY:	S_PATTERSON
DRAWN BY:	J_LONDON
CHECKED BY:	S_PATTERSON
APPROVED BY:	R_GALPIN
REGISTRATION NO.	20938

NO.	DATE	DESCRIPTION	BY
SCALE: 1"=50'			
DATE: 09-05-2014			
JOB NO. 2014-802			

**TACKETT FARMS
LAND LOT 264 & 265
17TH DISTRICT 2ND SECTION
COBB COUNTY, GEORGIA**

TREE REPLACEMENT PLAN FOR REZONING