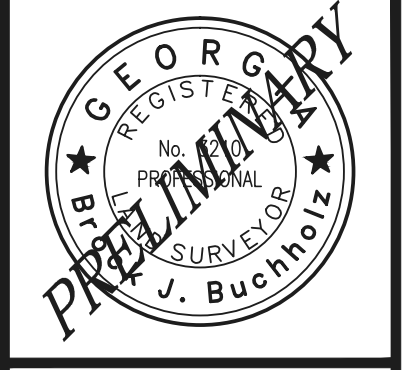
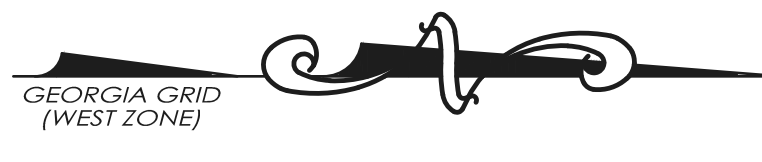


LOCATION MAP

PARKING COUNT

SURFACE SPACES	
REGULAR SPACES	318
HANDI-CAP SPACES	14
TOTAL SPACES	332

TRACT 1	TRACT 2	TRACT 3	TOTAL AREA
7.447 ACRES	2.594 ACRES	2.454 ACRES	12.495 ACRES
324,403 SQ. FT	112,909 SQ. FT	106,911 SQ. FT	544,223 SQ. FT
P.I.D. - 17084600030	P.I.D. - 17084600100	P.I.D. - 17084600110	ZONING: GC
3110 SPORTS AVENUE	3110 SPORTS AVENUE	0 SPORTS AVENUE	(GENERAL COMMERCIAL)



HARDY SURVEYING GROUP, LLC
 LAND SURVEYORS & CONSULTANTS
 3715 Northside Parkway, NW
 Atlanta, Georgia 30327
 (678) 855-7902

Curve Table

Curve	Length	Radius	Direction	Chord
C1	36.17'	25.00'	S41°50'19"W	33.10'
C2	142.87'	64.00'	S19°20'20"W	115.00'
C3	100.53'	64.00'	S89°39'36"E	90.51'
C4	50.26'	64.00'	N22°51'23"E	48.98'
C5	13.67'	330.00'	N1°32'35"E	13.67'

Line Table

Line #	Direction	Length
L1	S89°25'51"E	22.49'
L2	N00°46'19"E	32.28'
L3	S45°20'24"W	26.29'
L4	S44°39'36"E	26.73'
L6	S89°38'37"E	5.00'
L7	N00°21'23"E	50.00'



Know what's below
Call before you dig

SITE DATA

SURVEYOR: Hardy Surveying Group LLC
 7 Dunwoody Park, Suite 115
 Atlanta, GA 30338
 Office: (770) 698-0019
 Fax: (770) 395-6999

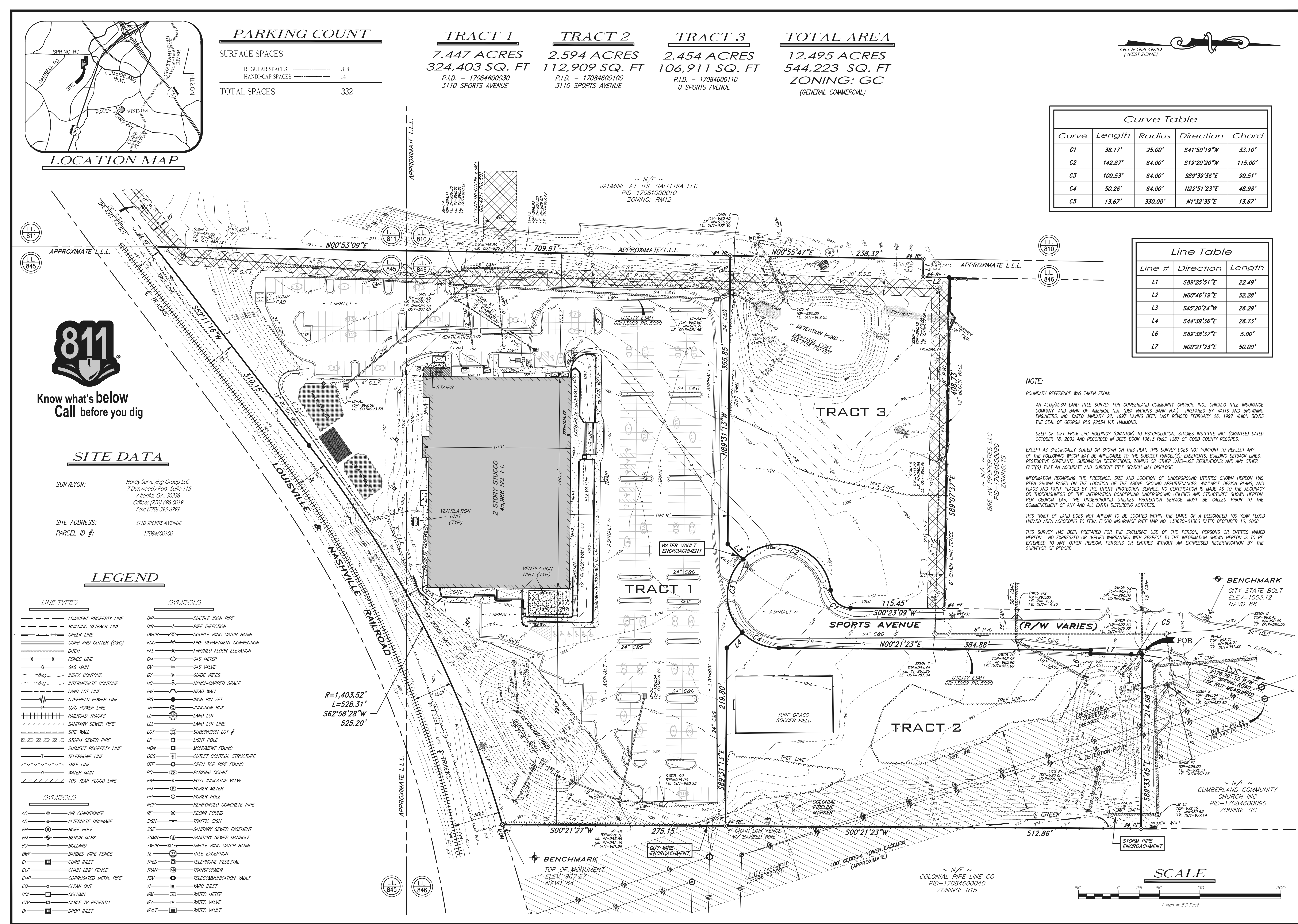
SITE ADDRESS: 3110 SPORTS AVENUE

PARCEL ID #: 17084600100

LEGEND

- LINE TYPES**
- ADJACENT PROPERTY LINE
 - BUILDING SETBACK LINE
 - CREEK LINE
 - CURB AND GUTTER (C&G)
 - DITCH
 - FENCE LINE
 - GAS MAIN
 - INDEX CONTOUR
 - INTERMEDIATE CONTOUR
 - LAND LOT LINE
 - OVERHEAD POWER LINE
 - U/G POWER LINE
 - RAILROAD TRACKS
 - SANITARY SEWER PIPE
 - SITE WALL
 - STORM SEWER PIPE
 - SUBJECT PROPERTY LINE
 - TELEPHONE LINE
 - TREE LINE
 - WATER MAIN
 - 100 YEAR FLOOD LINE
- SYMBOLS**
- AC - AIR CONDITIONER
 - AD - ALTERNATE DRAINAGE
 - BH - BORE HOLE
 - BM - BENCHMARK
 - BO - BOLLARD
 - BWF - BARBED WIRE FENCE
 - CI - CURB INLET
 - CLF - CHAIN LINK FENCE
 - CMP - CORRUGATED METAL PIPE
 - CO - CLEAN OUT
 - COL - COLUMN
 - CTV - CABLE TV PEDESTAL
 - DI - DROP INLET
 - DIP - DUCTILE IRON PIPE
 - DIR - PIPE DIRECTION
 - DWCB - DOUBLE WING CATCH BASIN
 - FDC - FIRE DEPARTMENT CONNECTION
 - FFE - FINISHED FLOOR ELEVATION
 - GM - GAS METER
 - GV - GAS VALVE
 - GY - GUIDE WIRES
 - HC - HANDI-CAPPED SPACE
 - HW - HEAD WALL
 - IPS - IRON PIN SET
 - JB - JUNCTION BOX
 - LL - LAND LOT
 - LLL - LAND LOT LINE
 - LOT - SUBDIVISION LOT #
 - LP - LIGHT POLE
 - MON - MONUMENT FOUND
 - OCS - OUTLET CONTROL STRUCTURE
 - OFC - OPEN TOP PIPE FOUND
 - PC - PARKING COUNT
 - PV - POST INDICATOR VALVE
 - PM - POWER METER
 - PP - POWER POLE
 - RCP - REINFORCED CONCRETE PIPE
 - RF - REBAR FOUND
 - SIGN - TRAFFIC SIGN
 - SSE - SANITARY SEWER EASEMENT
 - SSMH - SANITARY SEWER MANHOLE
 - SWCB - SINGLE WING CATCH BASIN
 - TE - TITLE EXCEPTION
 - TPED - TELEPHONE PEDESTAL
 - TRAN - TRANSFORMER
 - TSV - TELECOMMUNICATION VAULT
 - TI - TARD INLET
 - WM - WATER METER
 - WV - WATER VALVE
 - WVT - WATER VAULT

R=1,403.52'
 L=528.31'
 S62°58'28"W
 525.20'



NOTE:

BOUNDARY REFERENCE WAS TAKEN FROM:
 AN ALTA/ACSM LAND TITLE SURVEY FOR CUMBERLAND COMMUNITY CHURCH, INC.; CHICAGO TITLE INSURANCE COMPANY, AND BANK OF AMERICA, N.A. (DBA NATIONS BANK N.A.) PREPARED BY WATTS AND BROWNING ENGINEERS, INC. DATED JANUARY 22, 1997 HAVING BEEN LAST REVISED FEBRUARY 26, 1997 WHICH BEARS THE SEAL OF GEORGIA RLS #2554 V.T. HAMMOND.

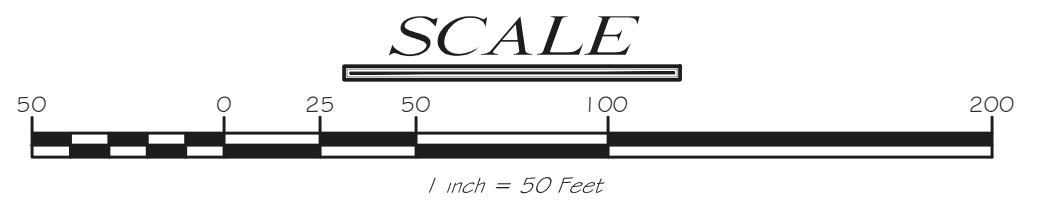
DEED OF GIFT FROM LPC HOLDINGS (GRANTOR) TO PSYCHOLOGICAL STUDIES INSTITUTE INC. (GRANTEE) DATED OCTOBER 18, 2002 AND RECORDED IN DEED BOOK 13613 PAGE 1287 OF COBB COUNTY RECORDS.

EXCEPT AS SPECIFICALLY STATED OR SHOWN ON THIS PLAN, THIS SURVEY DOES NOT PURPORT TO REFLECT ANY OF THE FOLLOWING WHICH MAY BE APPLICABLE TO THE SUBJECT PARCEL(S): EASEMENTS, BUILDING SETBACK LINES, RESTRICTIVE COVENANTS, SUBDIVISION RESTRICTIONS, ZONING OR OTHER LAND-USE REGULATIONS; AND ANY OTHER FACT(S) THAT AN ACCURATE AND CURRENT TITLE SEARCH MAY DISCLOSE.

INFORMATION REGARDING THE PRESENCE, SIZE AND LOCATION OF UNDERGROUND UTILITIES SHOWN HEREON HAS BEEN SHOWN BASED ON THE LOCATION OF THE ABOVE GROUND APPURTENANCES, AVAILABLE DESIGN PLANS, AND FLAGS AND PAINT PLACED BY THE UTILITY PROTECTION SERVICE. NO CERTIFICATION IS MADE AS TO THE ACCURACY OR THOROUGHNESS OF THE INFORMATION CONCERNING UNDERGROUND UTILITIES AND STRUCTURES SHOWN HEREON. PER GEORGIA LAW, THE UNDERGROUND UTILITIES PROTECTION SERVICE MUST BE CALLED PRIOR TO THE COMMENCEMENT OF ANY AND ALL EARTH DISTURBING ACTIVITIES.

THIS TRACT OF LAND DOES NOT APPEAR TO BE LOCATED WITHIN THE LIMITS OF A DESIGNATED 100 YEAR FLOOD HAZARD AREA ACCORDING TO FEMA FLOOD INSURANCE RATE MAP NO. 13067C-01386 DATED DECEMBER 16, 2008.

THIS SURVEY HAS BEEN PREPARED FOR THE EXCLUSIVE USE OF THE PERSON, PERSONS OR ENTITIES NAMED HEREON. NO EXPRESSED OR IMPLIED WARRANTIES WITH RESPECT TO THE INFORMATION SHOWN HEREON IS TO BE EXTENDED TO ANY OTHER PERSON, PERSONS OR ENTITIES WITHOUT AN EXPRESSED RECERTIFICATION BY THE SURVEYOR OF RECORD.



JLB PARTNERS
 3715 Northside Parkway, NW
 Atlanta, Georgia 30327
 (678) 855-7902

Date	Revision	No	Project No.	Surveyed By	Drawn By	Checked By	Date	Scale
		1	17-001	C.A.H.	B.J.B.	S.M.H.	9/16/17	1" = 50'
		2						
		3						
		4						
		5						
		6						
		7						
		8						

BOUNDARY / TOPOGRAPHIC SURVEY -
JLB REALTY, LLC
 Land Lots 845 & 846 - 17th District - 2nd Section
 COBB COUNTY, GEORGIA
 CITY OF SMYRNA

FB:17-004 PG:90
 G:\2017\17001\DWG
 17-001-TOPO.dwg