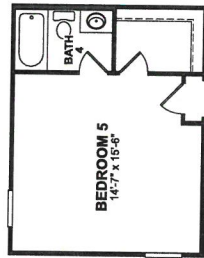


Paid Options

Structural options that add square footage or other structure (s) to the home for a fee



Opt Bedroom 5/Bath 4
ILO 2-Story



Opt Butler's Pantry
(Only Available with
Choice Kitchen B)



Dogwood II

4-5 beds / 3.5-4.5 baths
3,253-3,602 sq. ft.
2-car garage



Elevation FCA






Elevation FCB



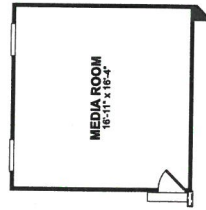
Elevation TRB

Legend	
OPT - Optional	HVAC - Heating/Ventilating
ILO - In Lieu Of	MECH - Mechanical Room
UTIL - Utility	WO - Wall Oven
WIC - Walk In Closet	MO - Microwave Oven
WIP - Walk In Pantry	LN - Linen
POW - Powder Room	PAN - Pantry
CL - Closets	Dotted Lines Denote
SG - Sliding Glass Door	Optional Items
W - Washer	Dashed Lines Denote
D - Dryer	Elevated Features
WH - Water Heater	
DW - Dishwasher	
REF - Refrigerator	

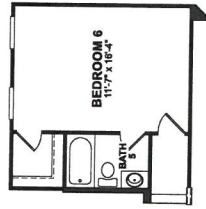
   *Due to our consistent efforts to improve our homes, Beazer reserves the right to make changes without notice or obligation to plans, elevations, and pricing. Illustrations and specifications are believed correct at time of publication, and are not intended to create any warranty or contract rights. All dimensions are as shown. Plans may vary depending on the elevation and options chosen. All plans are the property of Beazer Homes. Consult your New Home Counselor for details. © 2018 Beazer Homes. Bethesda Heights 318

Paid Options

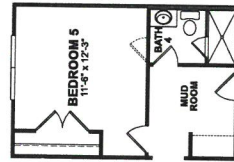
Structural options that add square footage or other structure (s) to the home for a fee



Opt Media Room
ILO 2-Story Family



Opt Bedroom 6/Bath 5
ILO 2-Story Family



Opt Bedroom 5/Bath 4 ILO
Study and Powder



Opt Powder ILO
WIC Pantry

Legend	
OPF - Optional	HVAC - Heating Ventilating Air Conditioning
ILO - In Line Of	MECH - Mechanical Room
UTIL - Utility	WO - Wall Oven
WIC - Walk In Closet	MO - Microwave Oven
WIP - Walk In Pantry	LN - Linen
PPR - Powder Room	PPN - Pantry
SGD - Sliding Glass Door Denote
W - Washer	Optional Items
D - Dryer	----- Denote
WH - Water Heater	Dashed Lines Denote
DW - Dishwasher	Elevated Features
REF - Refrigerator	



*Due to our consistent efforts to improve our homes, Beazer reserves the right to make changes without notice or obligation to plans, elevations and pricing. Illustrations may vary depending on the elevation and options chosen. All plans are the property of Beazer Homes. Consult your New Home Counselor for details. © 2018 Beazer Homes. Washington Trace 3/18



Amelia II

4-6 beds / 3-5 full baths / 1-2 half baths
3,205-3,495 sq. ft.
2-car garage



Elevation ACL



Elevation FCM



Elevation TRN



5 key questions to ask before buying your next home.



Laurel
5 beds / 4 baths
2,856 sq. ft.
2-car garage

1. Are your homes ENERGY STAR® Certified?

Yes, 100% of the homes we build are ENERGY STAR® Certified. In fact, we go above and beyond ENERGY STAR requirements to provide you with significant energy savings month after month — which directly translates into a lower cost of ownership.

2. How do you verify the cost savings of your homes?

Beazer uses an independent third party to test and verify the energy efficiency of each one of our homes. They use these results to rate our homes on how much energy the home can save and how much money you may be able to save on monthly utility bills.

3. Do I have flexibility to change my floorplan?

Absolutely. Beazer Choice Plans™ offer flexible floorplan options and design selections that allow you to personalize the primary living areas of your new home — at no additional cost. Ask your New Home Counselor what Choice Plans™ are available in your community.

4. Can I personalize the finishes in the home?

Yes, it's part of the benefit of buying a new Beazer home. You'll have the opportunity to select from a wide variety of finishes, such as granite, flooring, appliances, cabinetry and the like. With your help, we'll create a home that is all about you.

5. How do I know I'm choosing the right mortgage program?

We'll work with you to make sure that you do. Here at Beazer, we encourage you to shop around for the best mortgage and we've created an environment that makes it easy to do so. In every Beazer community, we've identified a group of preferred lenders who provide comprehensive product portfolios, competitive rates and fees and outstanding customer service. The benefits of shopping can save you hundreds of dollars a year and will ensure you choose the right lender and mortgage program to meet your needs.

Get more out of your home
beazer.com • 888-623-2937

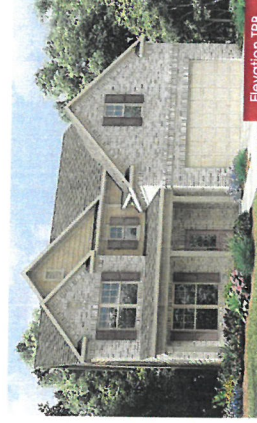


BZH
NYSE

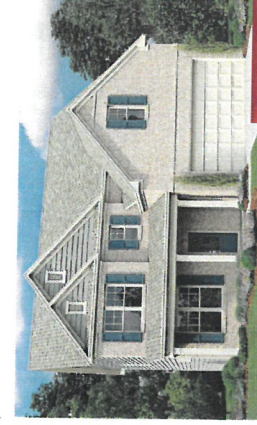
Due to our consistent efforts to improve our homes, Beazer reserves the right to make changes without notice or obligation to plans, elevations and pricing. Illustrations and specifications are believed correct at time of publication, and are not intended to create any warranty or contract rights. All elevations are approximate. Details shown may vary depending on the elevation and options chosen. All plans are the property of Beazer Homes. Consult your New Home Counselor for details. © 2018 Beazer Homes. Bethesda Heights - 378



Elevation FCB



Elevation 1R8

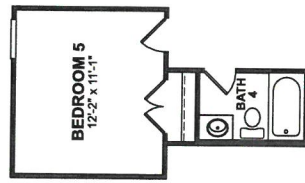


Elevation 1RC

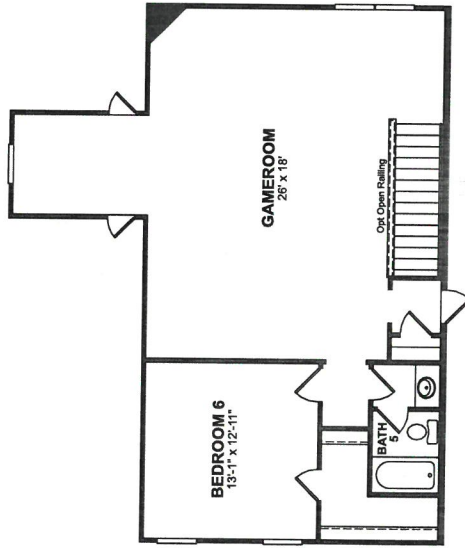


Paid Options

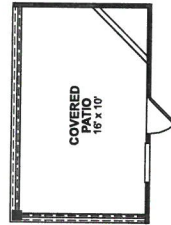
Structural options that add square footage or other structure (s) to the home for a fee



Opt Bedroom 5/Bath 4
ILO Study




Opt Third Floor
(Not Available with Basement)



Opt Covered Patio

Legend	
OPT - Optional	HVAC - Heating/Ventilating
ILO - In Lieu Of	MECH - Mechanical Room
UTIL - Utility	WO - Wall Oven
WIC - Walk In Closet	MO - Microwave Oven
WIP - Walk In Pantry	LN - Linen
CPK - Powder Room	PN - Pantry
SPK - Storage Room Denote
W - Washer	Optional Items
D - Dryer	WH - Water Heater
WH - Water Heater	DW - Dishwasher
DW - Dishwasher	REF - Refrigerator
REF - Refrigerator	Dashed Lines Denote
	Elevated Features

 *Due to our consistent efforts to improve our homes, Beazer reserves the right to make changes without notice or obligation to plans, elevations and pricing. Illustrations and specifications are believed correct at time of publication, and are not intended to create any warranty or contract rights. All dimensions are approximate. Details shown may vary depending on the elevation and options chosen. All plans are the property of Beazer Homes. Consult your New Home Counselor for details. © 2018 Beazer Homes. Bethesda Heights 3/18



Springdale II

4-6 beds / 3.5-5 baths
3,190-4,132 sq. ft.
2-car garage



Elevation FCA



Elevation ACB



Elevation TRB