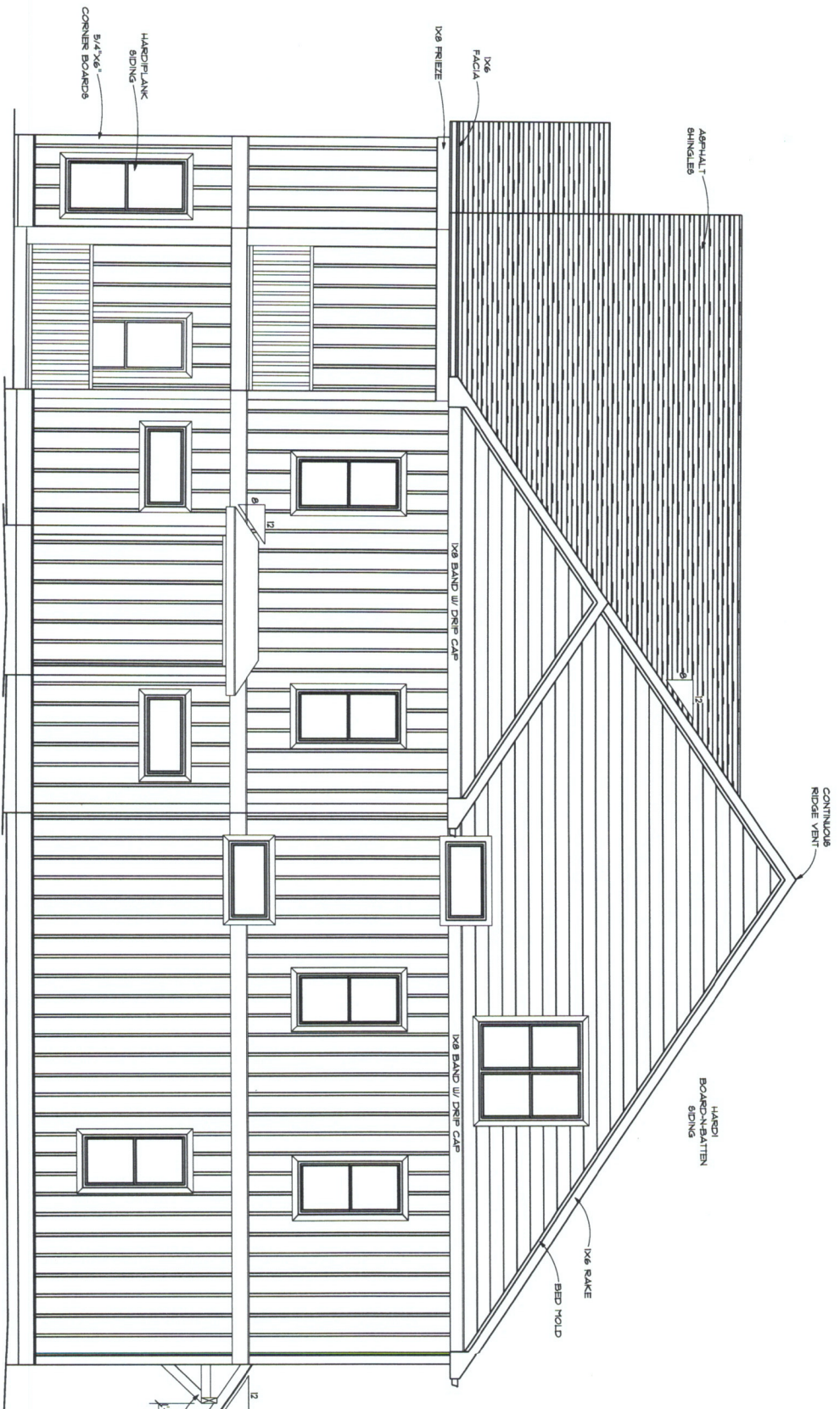
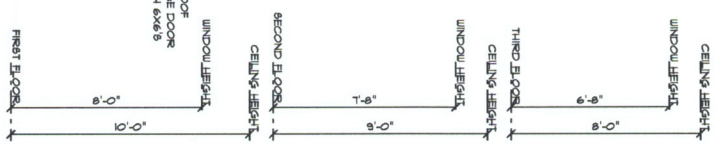
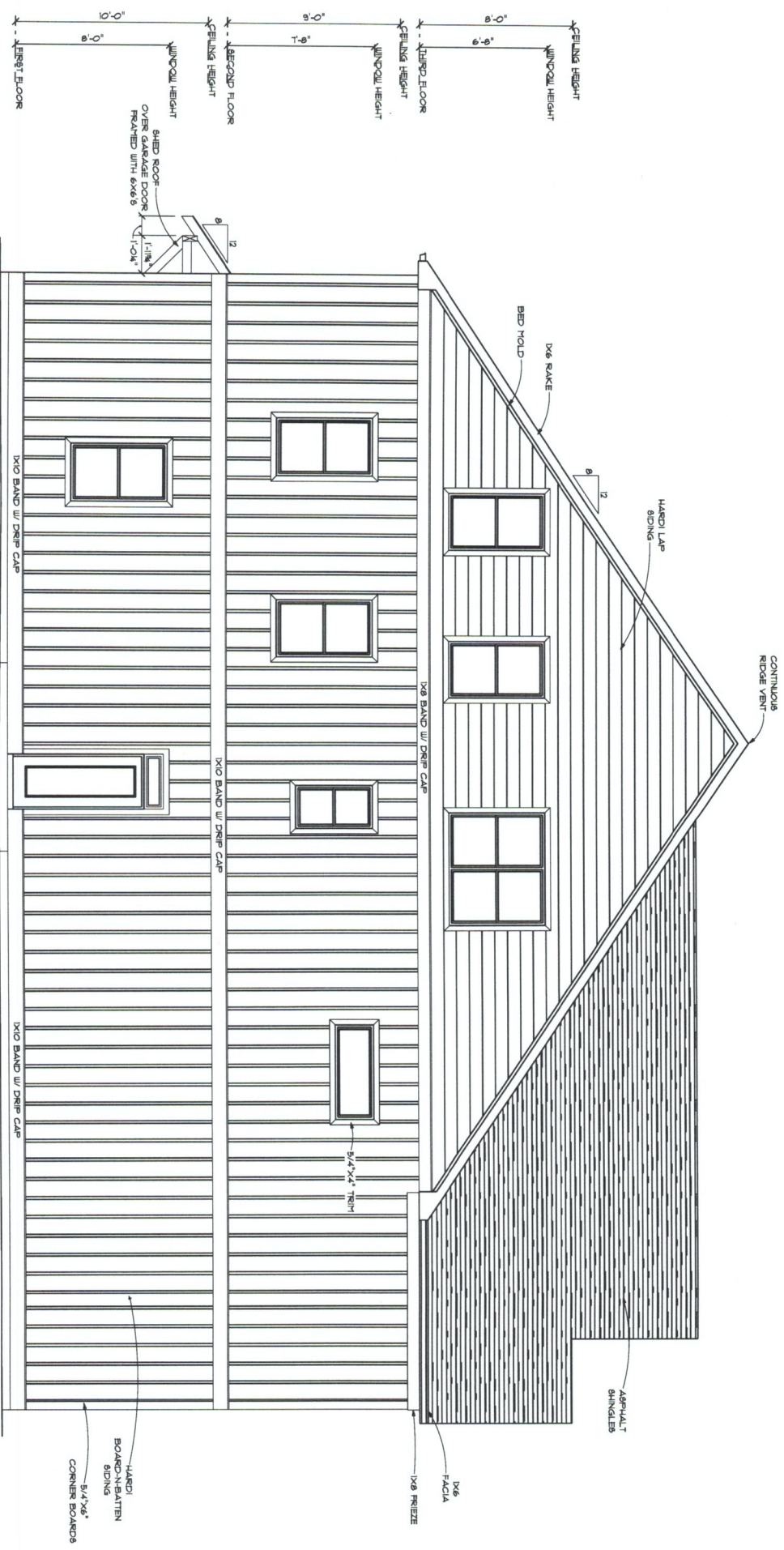


THE "LINTON"
FRONT ELEVATION



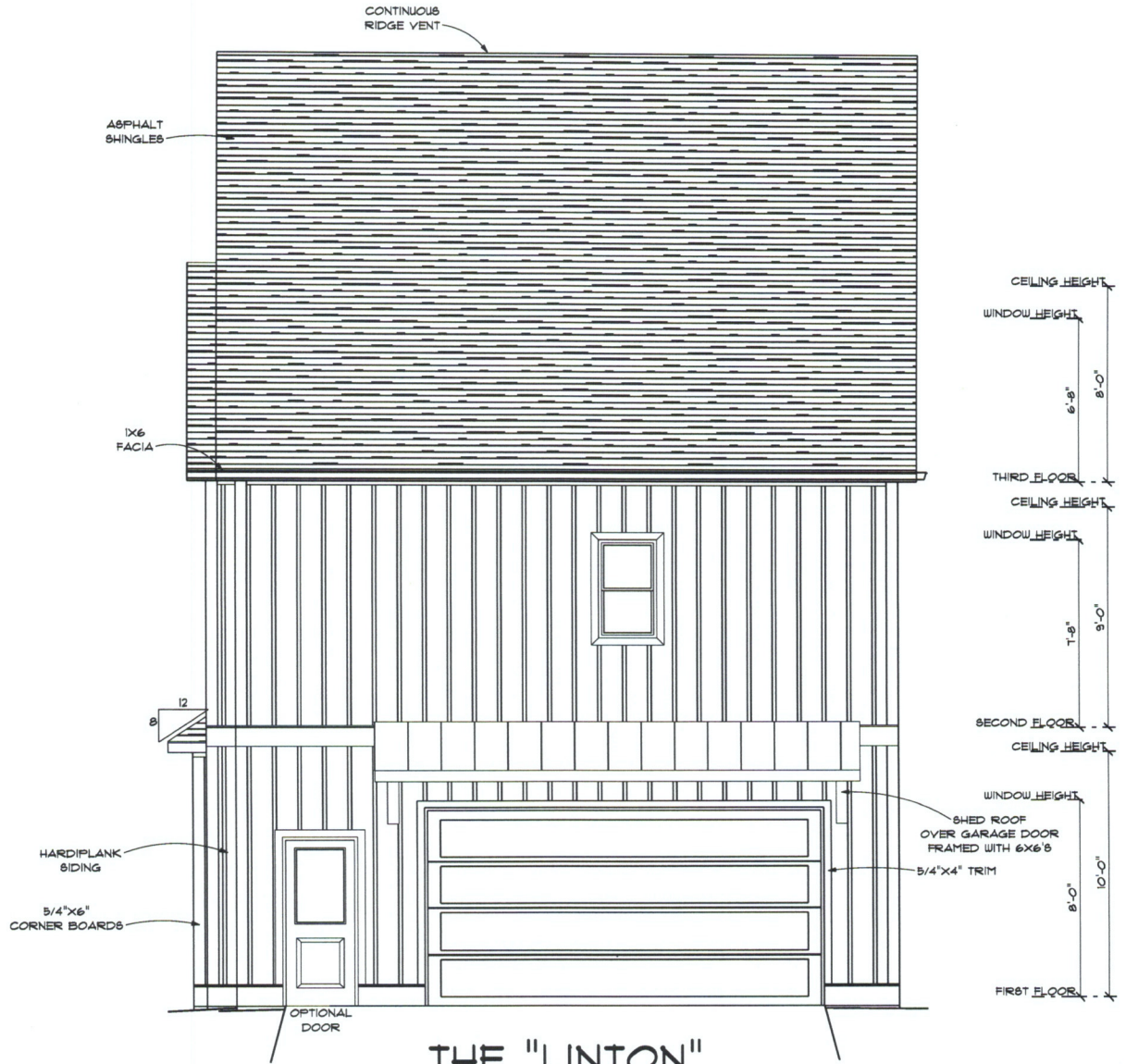
THE "LINTON"
RIGHT ELEVATION



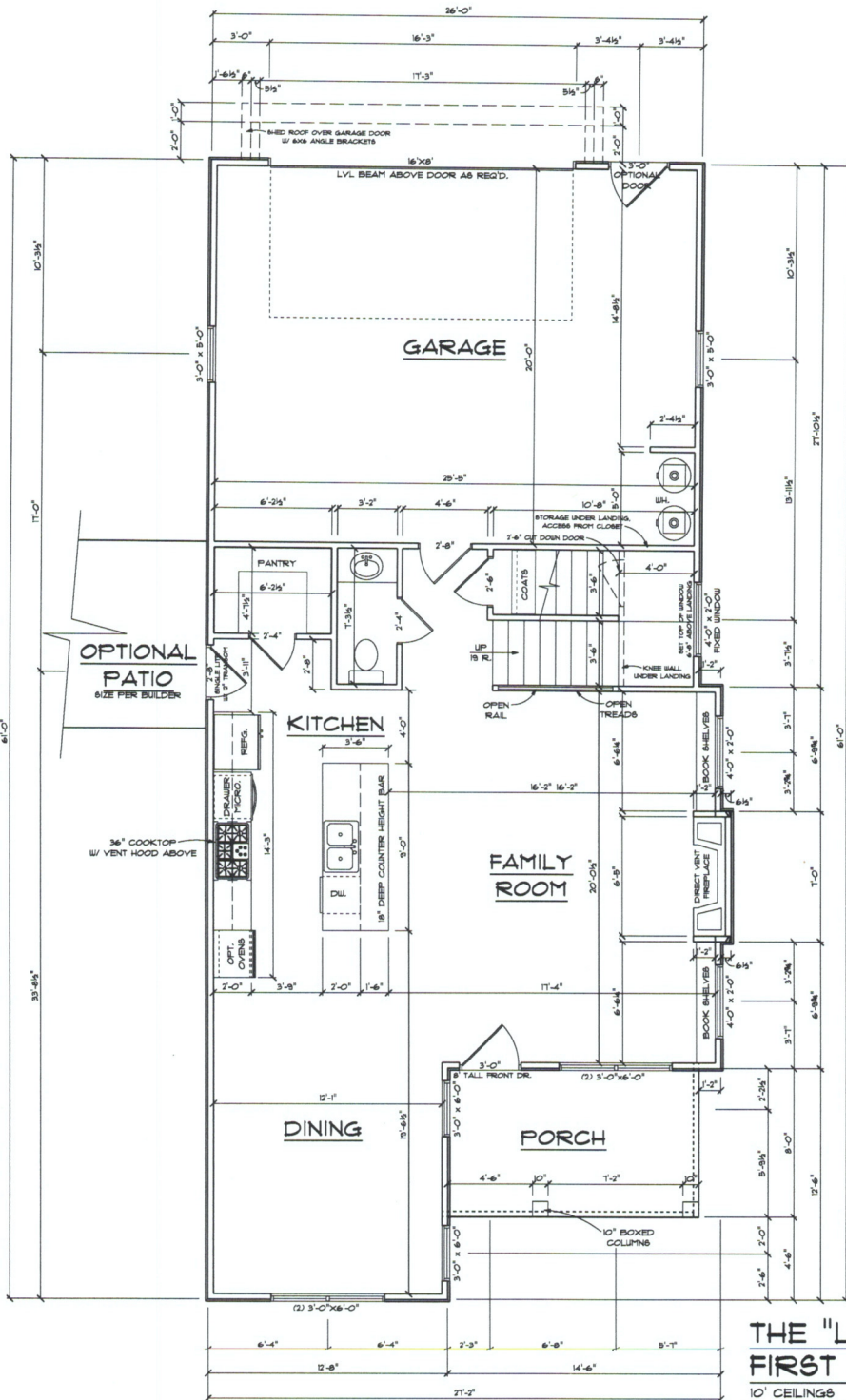


THE "LINTON"

LEFT ELEVATION

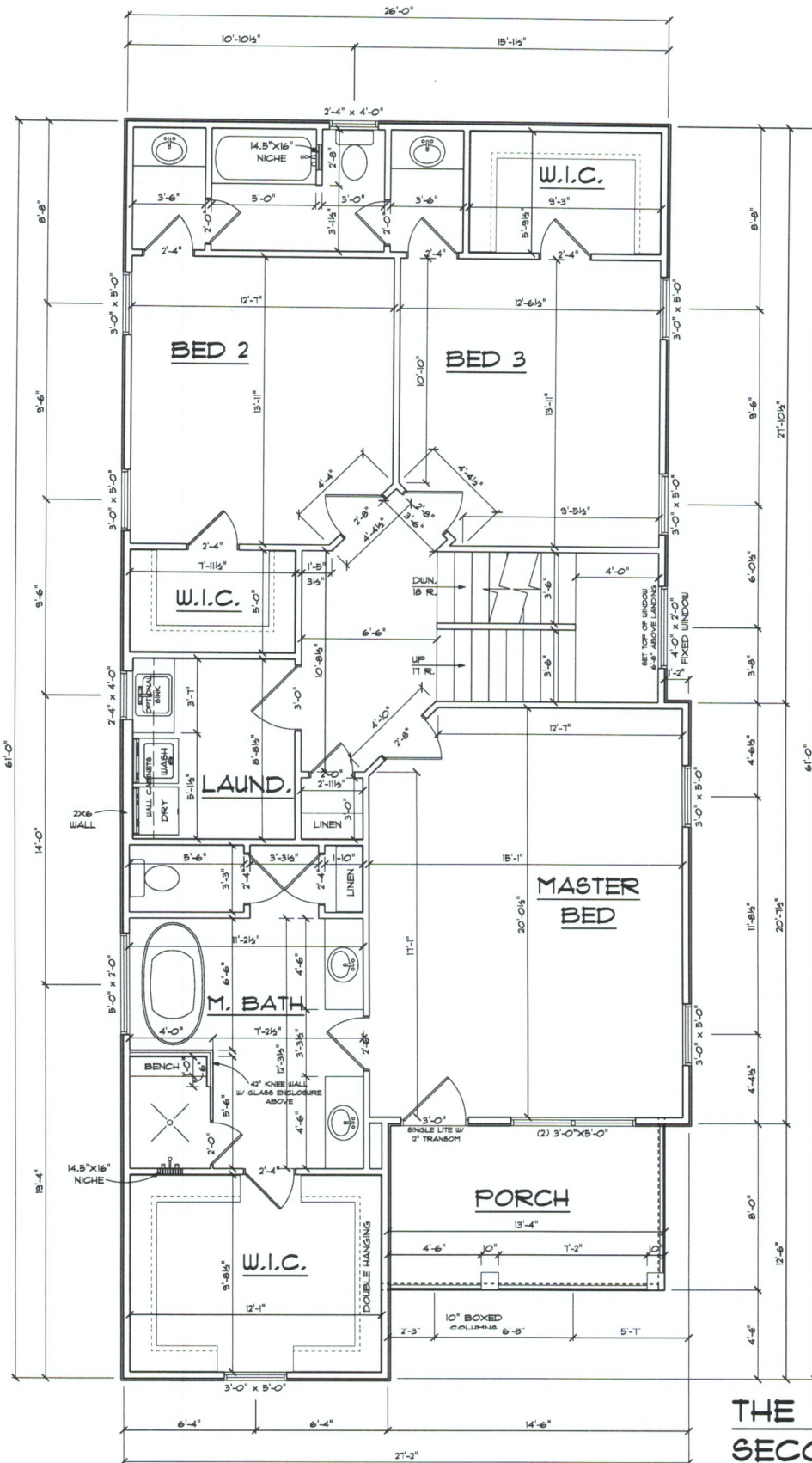


THE "LINTON"
 REAR ELEVATION



**THE "LINTON"
FIRST FLOOR**

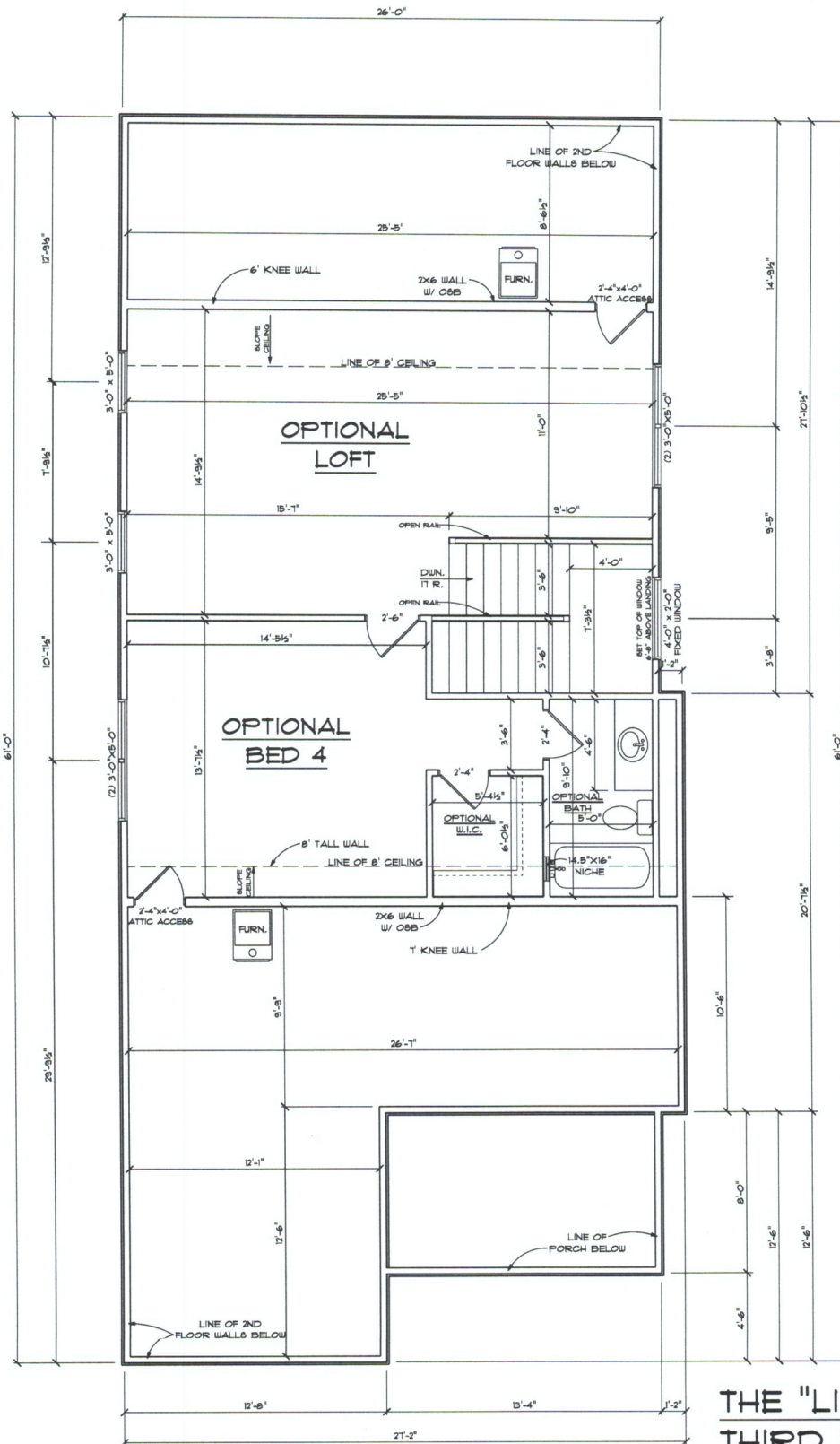
- 10' CEILING
- 934 HEATED SQ. FT.
- ALL DOORS TO BE 6'-8" TALL UNLESS NOTED OTHERWISE
- SET ALL WINDOWS AT 8'-0" HEADER HEIGHT



THE "LINTON" SECOND FLOOR

9' CEILINGS
1305 HEATED SQ. FT.

SET ALL WINDOWS ON SECOND FLOOR
AT T-8" HEADER HEIGHT



**THE "LINTON"
THIRD FLOOR SUITE**

8' CEILINGS
696 HEATED SQ. FT.

SET WINDOW AT 6'-8" HEADER HEIGHT