



City of Smyrna  
Attn: Richard Garland  
Parks and Recreation  
Smyrna, GA

December 1, 2017

## North Cooper Lake Park

### Bike Recreation Development Conceptual Overview and Cost Estimate for Grant Funding

Dear Mr. Garland,

Progressive Bike Ramps is pleased to present this document which has been created in response to the growing need for sustainable bike recreation area development at North Cooper Lake Park.

Below is a Concept Plan for the space that would create off-road cycling opportunities for a broad range of users, from beginner to intermediate skills levels. This space would provide progression opportunity so that riders can continue to be engaged as they practice and hone their skills.

Based on community feedback, the proposed amenities for Phase 1 include a Bicycle Playground area for beginner riders, slopestyle trails for intermediate riders, and approximately 3-5 miles of additional purpose-built mountain bike trails.

Our goal would be to create a fun area that would draw bike enthusiasts, families, and surrounding area community members to this area and provide active outdoor recreation amenities that promote a healthy and engaging experience.

A handwritten signature in black ink, appearing to read 'Tim Babcock', written over a white background.

Tim Babcock  
Bike Park Development Manager  
Progressive Bike Ramps



## **Site Assessment– Per Site info provided thus far**

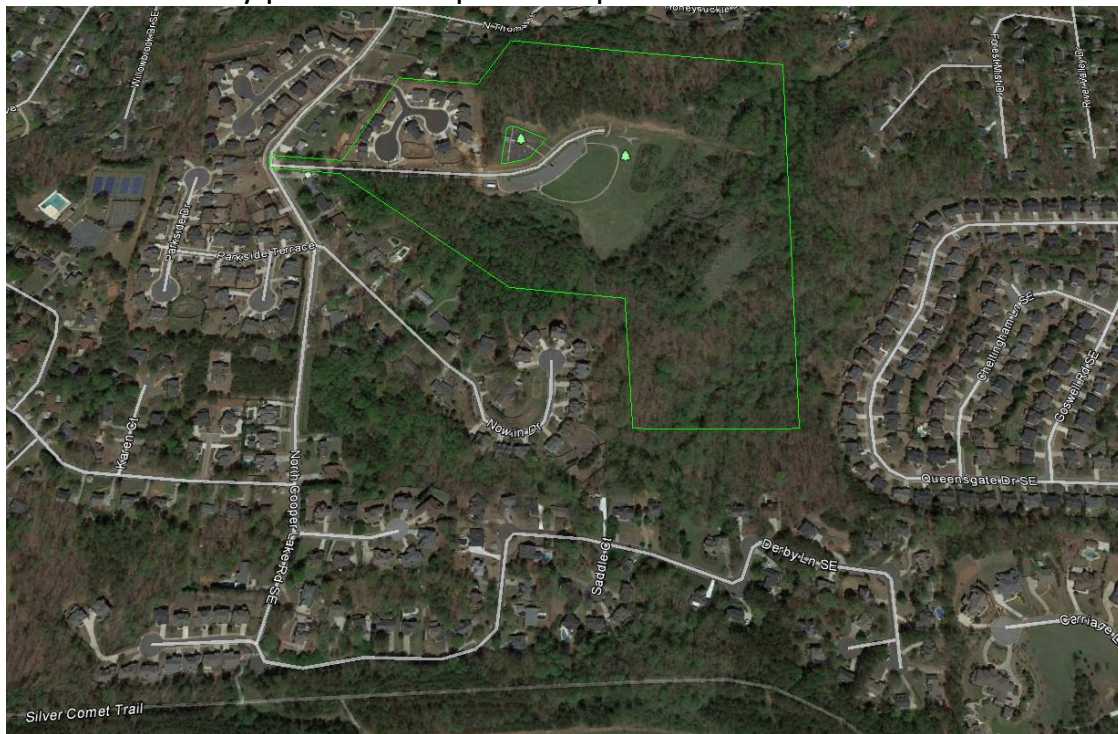
### **Overall Site Conditions**

The park currently provides limited opportunities for off-road cyclists but presents some unique and exciting opportunities for future development. The site selected for this bike recreation area lends itself to a multi-use area that can benefit from the slight drop in elevation in the open space area and sufficient elevation change from the starting area to each trail loop.

The park has existing parking that should be sufficient for current visitors and increased traffic from new infrastructure. There is potential to expand the parking lot to the East if the city determines that park visitation has increased to the level that would require additional parking. The city might also consider developing permanent restroom and water access in the future to ensure that visitors have access to the appropriate amenities.

### **Existing Area:**

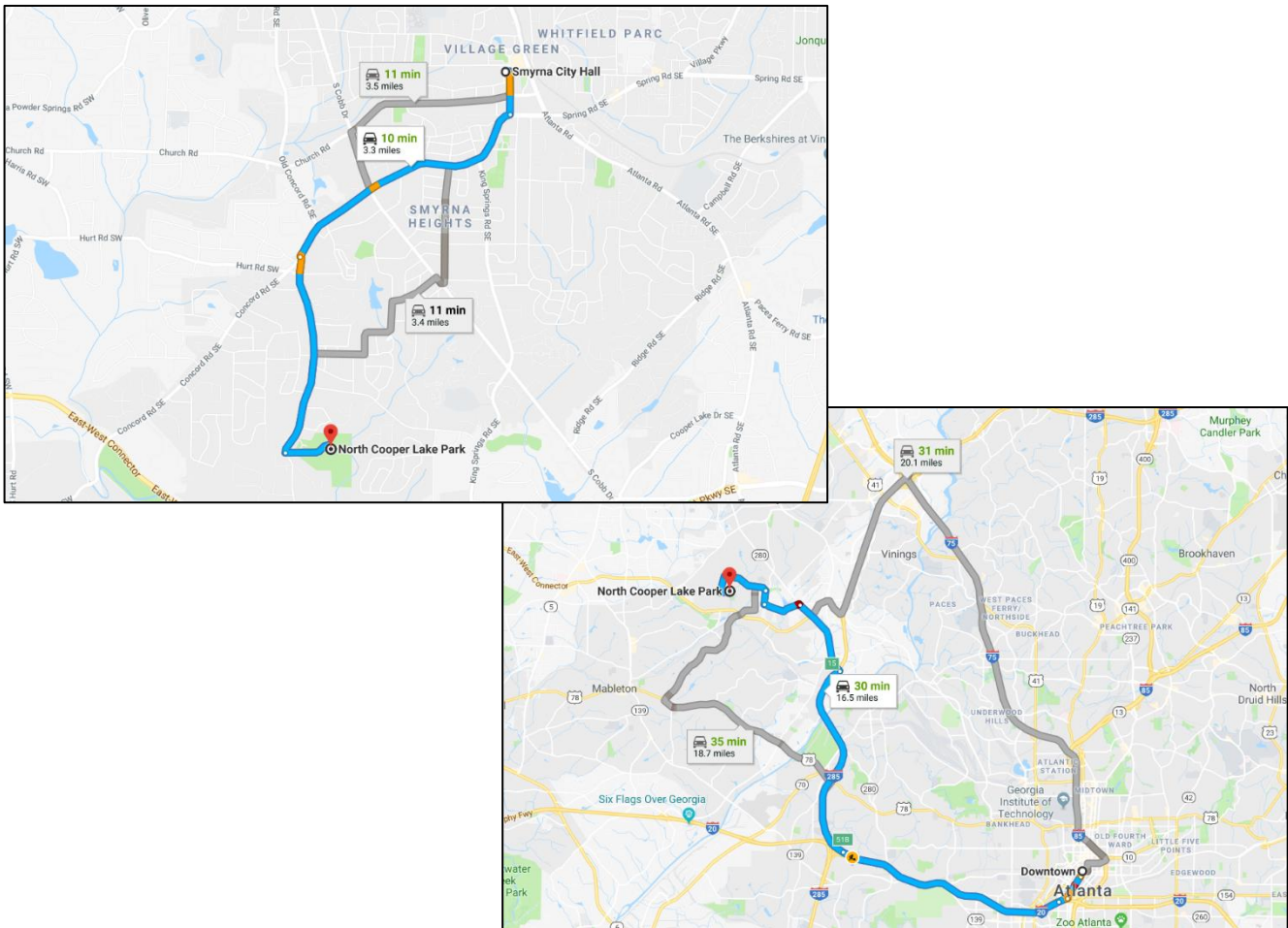
Currently the site has some trails that have been developed, a community garden, and will soon have a traditional playground for kids and families. Existing trails should be incorporated into future trails and may require some improvements to ensure that they provide an optimal experience for mountain bikes.





### Park Connectivity:

As bike recreation is developed at this park, riders will have direct access to ride their biked from the surrounding residential area. With the Smyrna City Center located only 3.5 miles from the park, it is recommended that the city consider the potential draw for kids and families on bike and take the proper steps to ensure that the road ways are safe for this type of access with crossing points, bike lanes or sidewalks. The development of the proposed Bike Recreation area would also draw users from other surrounding communities and the Atlanta area with Downtown Atlanta only 30 miles from the park. Although the park is isolated by residential developments, the city should be prepared to assess any increased traffic due new riding opportunities and work to ensure that speed limits are maintained. Mountain bikers and other off-road cyclists as a culture and user group often travel 300-600 miles to experience new riding opportunities and return frequently to areas with sustainable and purpose-built bike recreation opportunities. We would also recommend the development of connecting multi-use trails that would allow riders to connect from other parks and different areas via the Silver Comet Trail.





## Cost Estimate for Complete Project

Total Cost Opinion		
-15%	Total	+15%
\$234,9413.69	<b>\$276,369.05</b>	\$317,824.40

<b>Trail Construction</b>	<b>\$98,208.00</b>
<hr/>	
<i>Materials</i>	<i>\$24,552.00</i>
<i>Labor</i>	<i>\$49,104.00</i>
<i>Equipment</i>	<i>\$19,641.60</i>
<i>Contingency</i>	<i>\$4,910.40</i>
<b>Landscaping</b>	<b>\$16,129.30</b>
<hr/>	
<i>Material</i>	<i>\$2,515.00</i>
<i>Labor</i>	<i>\$10,998.00</i>
<i>Equipment</i>	<i>\$1,150.00</i>
<i>Contingency</i>	<i>\$1,466.30</i>
<b>Sustainable Features</b>	<b>\$154,531.75</b>
<hr/>	
<i>Equipment</i>	<i>\$133,793.73</i>
<i>Labor</i>	<i>\$13,379.37</i>
<i>Shipping</i>	<i>Free</i>
<i>Contingency</i>	<i>\$7,358.65</i>

<b>Final Design Work</b>	<b>\$7,500.00</b>
<hr/>	
<i>Trail Flagging and Alignment</i>	
<hr/>	
<i>Detailed Design Plan and Revisions</i>	
<hr/>	
<i>Detailed Cost Estimate</i>	
<hr/>	

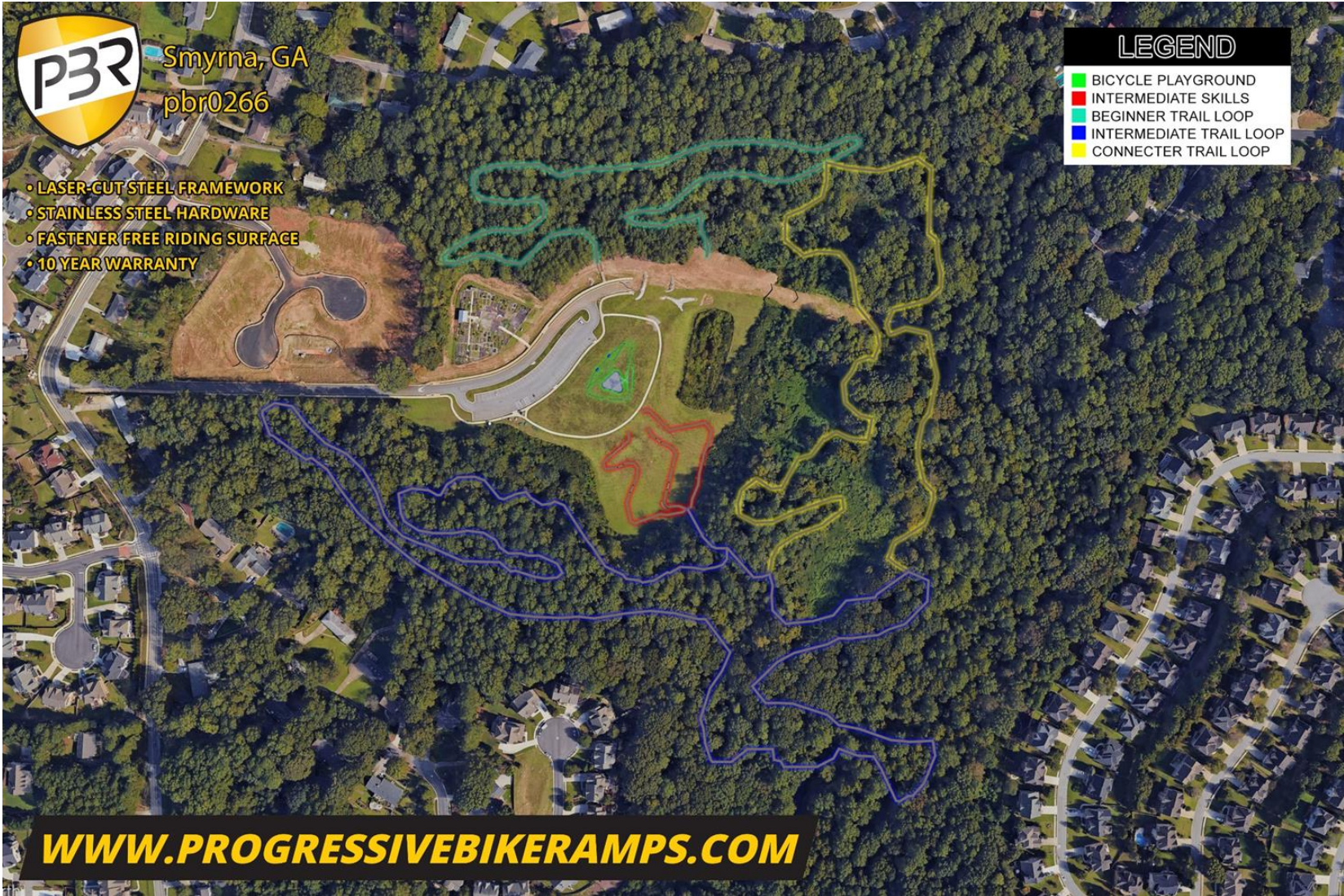




Progressive Bike Ramps | 601 S. McKinley | Joplin, MO 64801 | 417.288.4466

www.progressivebikeramps.com

### Concept Map









**Example Parks:**

**THURMONT BIKE PARK**

**THURMONT, MD**







Progressive Bike Ramps | 601 S. McKinley | Joplin, MO 64801 | 417.288.4466  
www.progressivebikeramps.com

**BIJOU BIKE PARK**  
**SOUTH LAKE TAHOE, CA**











Progressive Bike Ramps | 601 S. McKinley | Joplin, MO 64801 | 417.288.4466  
www.progressivebikeramps.com

**Example Parks:**

---

**PINEVILLE BIKE PARK**  
**PINEVILLE, MO**

