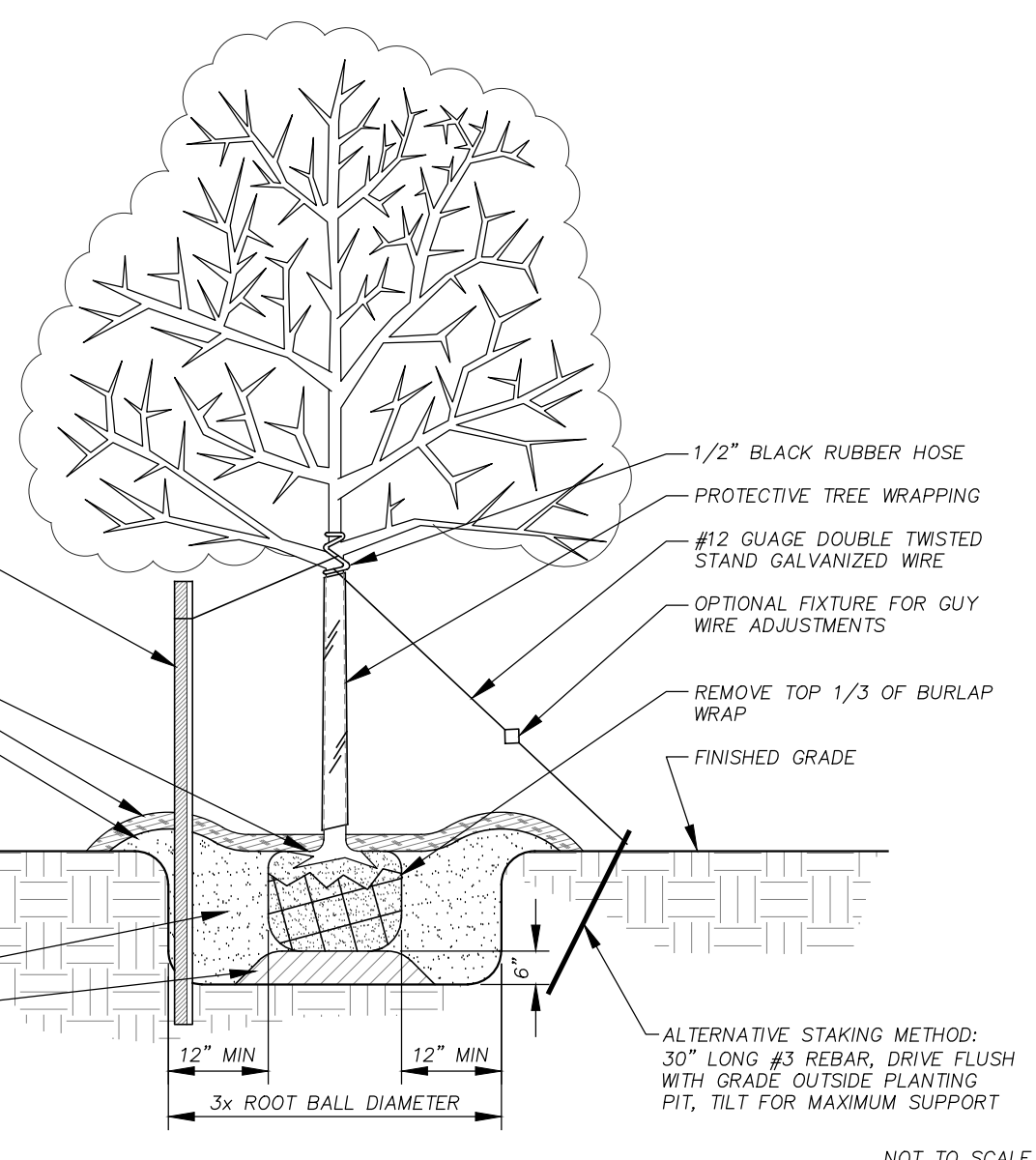
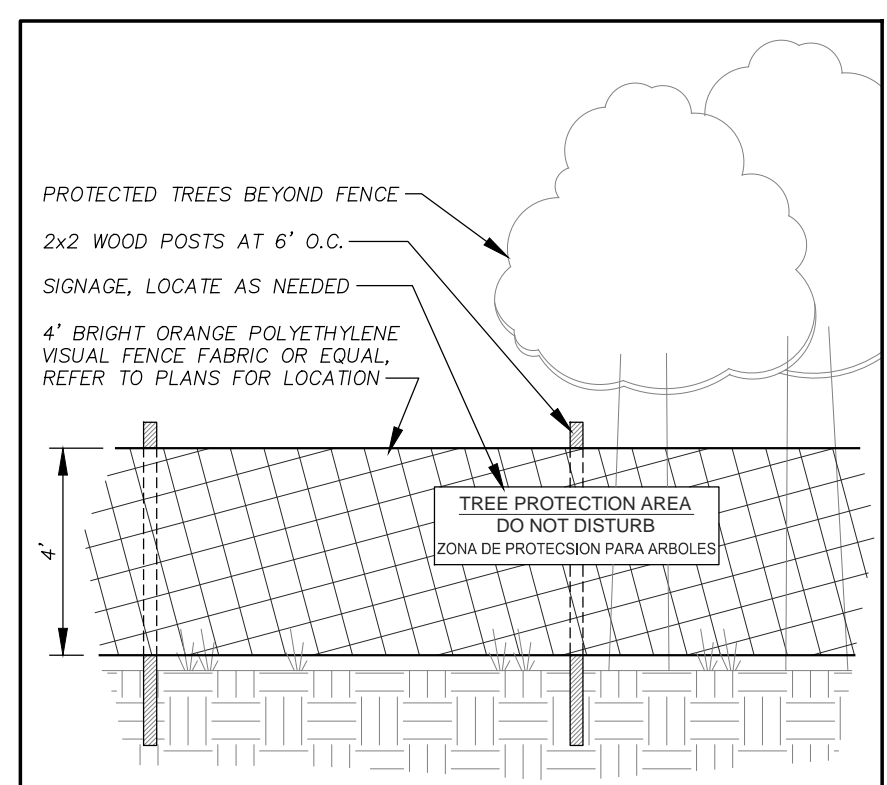


- NOTES:
- REFER TO PLANS AND PLANTING SCHEDULE FOR LOCATION, SIZE, AND SPECIES.
 - LOCAL ORDINANCES SHALL GOVERN.
 - EASEMENTS, BUFFERS, PROPERTY LINES, AND UNDERGROUND UTILITIES SHALL BE LOCATED PRIOR TO ANY EXCAVATION OR PLANTING.
 - EROSION CONTROL MEASURES SHALL BE IMPLEMENTED AT ALL TIMES.
 - ALL TREES SHALL BE HIGH QUALITY NURSERY STOCK AND INSPECTED THOROUGHLY PRIOR TO PLANTING.
 - METAL GUY WIRES SHALL NOT DIRECTLY TOUCH TRUNK OR BRANCHES.
 - FOR TREES WITH MULTIPLE TRUNKS, ATTACH GUY WIRES TO TRUNKS OPPOSITE OF THEIR RESPECTIVE STAKES SUCH THAT THE TRUNKS ARE PULLED TOWARDS THE CENTER OF THE TREE INSTEAD OF AWAY FROM IT.
 - STAKING SHALL REMAIN IN PLACE FOR AT LEAST 12 MONTHS. ADJUST GUY WIRES PERIODICALLY AS NEEDED.
 - FOLLOW MANUFACTURER'S RECOMMENDATIONS WHERE APPLICABLE FOR INSTALLATION, MAINTENANCE, AND CARE.



TREE STAKING AND PLANTING



- TREE PROTECTION/REPLACEMENT NOTES
- CONTACT THE COMMUNITY DEVELOPMENT DEPARTMENT (770-319-5387) TO ARRANGE A PRECONSTRUCTION CONFERENCE PRIOR TO ANY LAND DISTURBANCE. NO PERMIT SHALL BE ISSUED UNTIL PLANS ARE APPROVED AND AN ON-SITE INSPECTION WITH CITY REPRESENTATIVES OCCURS.
 - ALL TREE PROTECTION MEASURES SHALL BE INSTALLED PRIOR TO GRADING OR THE REMOVAL OF IMPERVIOUS SURFACES OR STRUCTURES.
 - BUFFERS SHALL BE REPLANTED SUBJECT TO COMMUNITY DEVELOPMENT DEPARTMENT APPROVAL.

- NOTES:
- REFER TO PLANS FOR LOCATION.
 - OVERLAP FOR JOINING SECTIONS SHALL BE AT LEAST 12 INCHES.
 - 1/4" WOOD PAILING MAY BE USED AS AN ALTERNATIVE TO MESH FENCING, AT DISCRETION OF LOCAL INSPECTOR.
 - ACCEPTABLE SIGNAGE IS A WEATHERPROOF 1/4" HEAVY DUTY PLASTIC BOARD WITH BOLD RED LETTERING ON BRIGHT WHITE BACKGROUND. ASK LOCAL INSPECTOR FOR ALTERNATIVES.

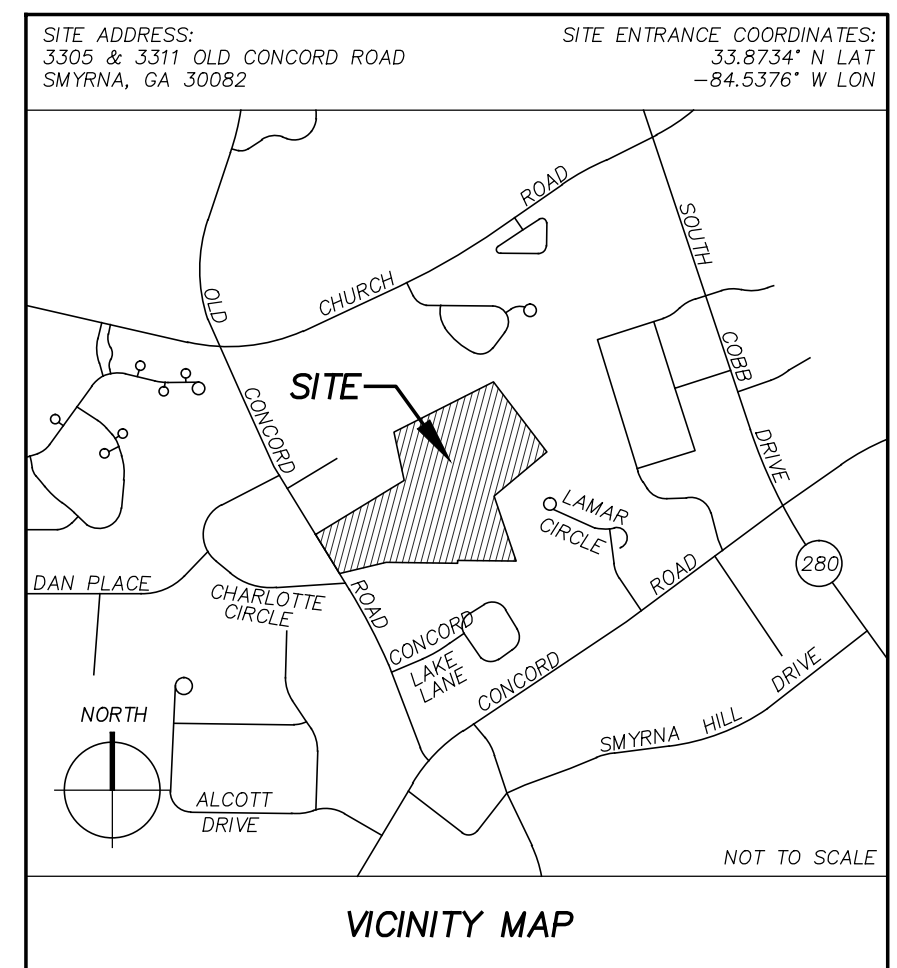
TREE PROTECTION FENCE

PLANTING SCHEDULE

QTY	CODE	COMMON NAME	BOTANICAL NAME	MIN SIZE	SPACING	COMMENTS	INCHES TOTAL	PCT
27	BC	BLACK GUM	NYSSA SYLVATICA	4" CAL	AS SHOWN		108"	26%
2	JC	JAPANESE CRYPTOMERIA	CRYPTOMERIA JAPONICA	4" HIT	AS SHOWN		6"	2%
7	JZ	JAPANESE ZELKOVA	ZELKOVA SERRATA	3" CAL	AS SHOWN	'GREEN VASE'	21"	6%
22	LE	LACEBARK ELM	ULMUS PARVIFOLIA	4" CAL	AS SHOWN		88"	21%
24	RM	RED MAPLE	ACER RUBRUM	4" CAL	AS SHOWN	'RED SUNSET'	96"	23%
23	WO	WILLOW OAK	QUERCUS PHELLOS	4" CAL	AS SHOWN		92"	22%
105	TOTAL	TREES (OVERSTORY TREES)					411"	100%

72 STREET TREES: 6 (OLD CONCORD ROAD), 66 (INTERIOR STREETS).
33 LOT TREES (33 LOTS @ 1 TREE EACH), 23 BC, 5 RM, 5 WO

*94 OF THE 4" CAL TREES (37%) TO BE APPLIED TO THE SPECIMEN TREE RECOMPENSE OF 373" (37 BC, 22 LE, 24 RM, & 21 WO). THE REMAINING 35" TO BE APPLIED TO THE REPLACEMENT DENSITY FACTOR (RDF). SEE SITE DENSITY CALCULATIONS.



SITE DENSITY CALCULATIONS

TOTAL SITE AREA = 11.32 ACRES

SITE DENSITY FACTOR (SDF) CALCULATIONS

SDF REQUIRED (11.32 AC. X 100 INCHES/ACRE) = 1,133 INCHES

SPECIMEN TREES TO BE REMOVED/RECOMPENSE:

DIA.	TREE #/TYPE	QTY.	TOTAL INCHES
10"	#6, #7 DOGWOOD	2	20"
12"	#11 DOGWOOD	1	12"
32"	#1/HICKORY	1	32"
33"	#5/DAK	1	33"
36"	#9/PINE-#10, #12/POPLAR	3	108"
38"	#3/DAK	1	38"
40"	#4/MAGNOLIA-#9/DAK	1	80"
50"	#2/DAK	1	50"
TOTAL		12	373"

TOTAL SDF = 1,133" SITE AC. + 373" RECOMPENSE = 1,506"

THERE ARE 7 SPECIMEN TREES TO BE SAVED (SEE EDF BELOW).

EXISTING DENSITY FACTOR (EDF) CALCULATIONS

SPECIMEN TREES TO BE SAVED:

DIA.	TREE #/TYPE	QTY.	TOTAL INCHES
10"	#3, #4 DOGWOOD	2	20"
36"	#15/DAK-#16, #18/POPLAR	4	132"
40"	#19/PINE	1	40"
TOTAL		7	192"

OTHER TREES TO BE SAVED:

DIA.	QTY.	TOTAL INCHES	DIA.	QTY.	TOTAL INCHES
10"	23	230"	19"	4	76"
11"	2	22"	20"	8	160"
12"	18	216"	23"	3	66"
13"	7	91"	23"	2	46"
14"	1	14"	24"	14	336"
15"	19	285"	25"	1	25"
16"	3	48"	26"	1	26"
17"	1	17"	28"	1	28"
18"	22	396"	30"	11	330"
TOTAL		2,412"			

TOTAL INCHES SAVED = 612" (SPECIMEN) + 2,412" (OTHER) = 3,024"

REPLACEMENT DENSITY FACTOR (RDF)

SITE DENSITY FACTOR = 1,133"

EXISTING DENSITY FACTOR = 3,024"

REPLACEMENT DENSITY FACTOR REQUIRED = 1,891"

REPLACEMENT DENSITY FACTOR PROPOSED = 35" (SEE PLANT SCHEDULE)

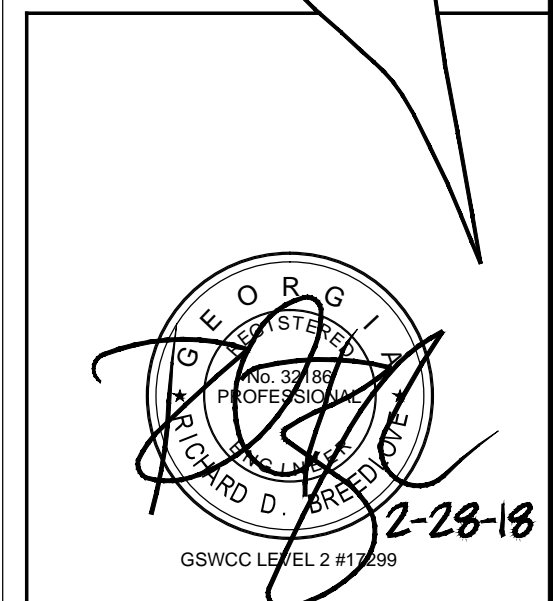
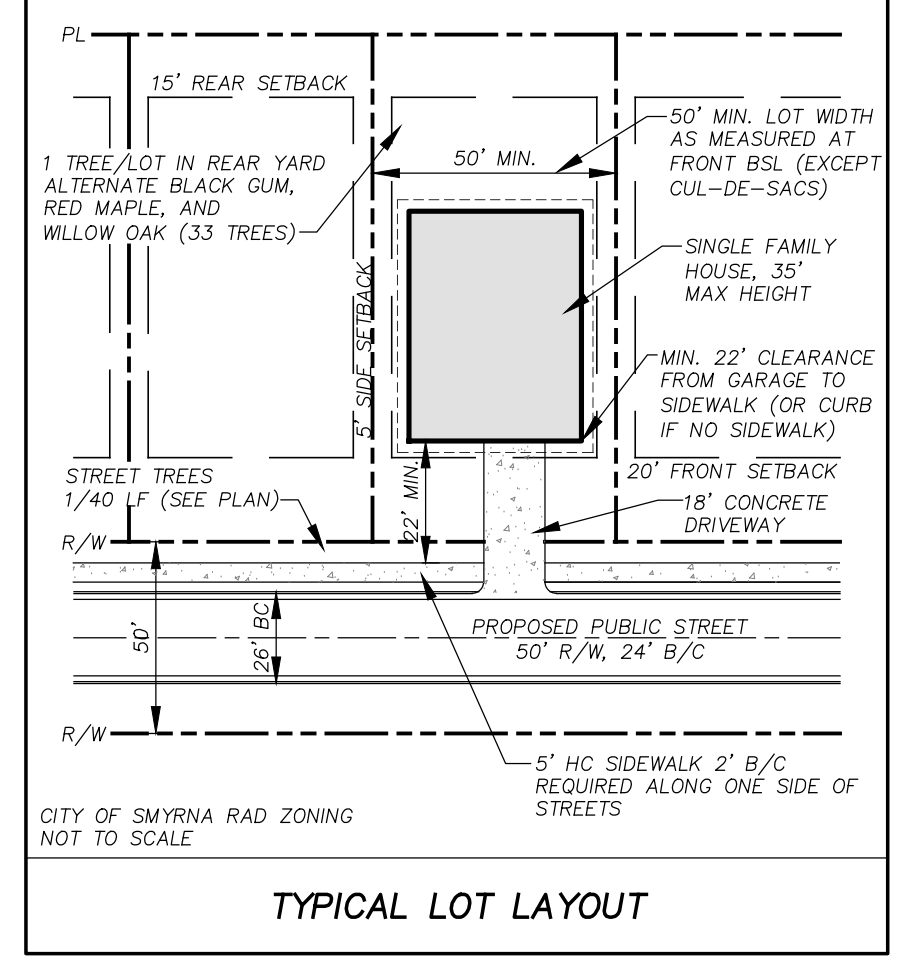
EDF + PROPOSED RDF EXCEEDS THE REQUIRED SDF. REQUIREMENT HAS BEEN MET. (3,024" + 35" = 3,059" > 1,133")

TOTAL INCHES SAVED EXCEEDS 100"/AC. (3,059" > 1,133")

STREET TREE CALCULATIONS

TREESCAPE STRIP	LENGTH	OVERSTORY TREES REQ'D	TREES PROVIDED
'A' (OLD CONCORD RD)	223 LF	1/40 LF = 6	6 PROPOSED
'B' (NEW STREETS)	2,500 LF	1/40 = 63	66 PROPOSED

NOTE: STREET TREES TO BE PLANTED A MIN. OF 15' FROM DRIVEWAYS AND 35' FROM ROAD INTERSECTIONS FOR MINOR COLLECTORS.



DOVETAIL
civil design inc

3651 Mars Hill Road
Suite 1800
Watkinsville, GA 30677
Office: (678) 726-3300
Fax: (678) 804-1874
www.dovetailcivil.com

ISSUE	DATE	DESCRIPTION
1	1/09/18	REZONING/ANNEXATION SUBMITTAL TO CITY
2	2/28/18	CONCEPTUAL SITE PLAN REVISIONS, COMMENTS ADDRESS

Logan's Walk
REZONING AND ANNEXATION

DEVELOPER INFORMATION
CS REALTY GROUP, LLC
3020 ROSWELL ROAD, SUITE 200
MARIETTA, GEORGIA, 30062
PHONE: (404) 405-9007
CONTACT PERSON: KEITH CANNON
11.32 ACRES

24-HR CONTACT: KEITH CANNON, (404) 405-9007

PROJECT NUMBER: CSR003
DATE: 2/28/18
ISSUE NUMBER: 2
CHECKED BY: ROB
SHEET TITLE: TREE PROTECTION & REPLACEMENT PLAN

SHEET NUMBER: RZ2