

MODIFIED ARBORIST REPORT FOR:

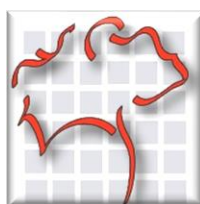
South Cobb & Oakdale Rd.

**City of Smyrna, Georgia**

Prepared for:

**Teagan Frank - Kimley Horn**

Visual Inspection only



Prepared by:

T.J. Schell, LLC

Landscape Architects

And Certified Arborists

2985 Gordy Parkway, Suite 422

Marietta, GA 30066

[teresa@tjschell.com](mailto:teresa@tjschell.com)

Cell 770-361-2319

Teresa H. Eldredge, PLA, ISA

Certified Arborist

ISA SO-5442A

September 27, 2021

**Specimen minimum tree size:**

- l Any tree which equals or exceeds the following diameter sizes:
  - a. 10 inch dbh – Small trees or other ecologically similar trees of the following Genus: Cherry, Dogwood, Fringe, Magnolia other than Southern Magnolia, Ornamental Maple, Persimmon, Redbud and Sourwood.
  - b. 20 inch dbh – Coniferous trees or other ecologically similar trees of the following Genus: Aborvitae, Baldcypress, Cedar, China Fir, Eastern Hemlock and Eastern Red Cedar.
  - c. 24 inch dbh – Overstory trees or other ecologically similar trees of the following Genus: Ash, Beech, Birch, Blackgum, Elm, Gingko, Hickory, Oak, Pecan, Poplar, Red and Sugar Maple, Southern Magnolia, Spruce and Sweetgum.
  - d. 36 inch dbh – Overstory trees or other ecologically similar trees of the following Genus: Pine-



1. **Water Oak – 25+24+22” dbh (Tag #46)** small conks at triple trunk split, Included bark at split, 1 main leader sounds hollow when sounded in an area and is in decline – Poor Condition – **Request Not Specimen**



Included bark at split

Conk at trunk split indicating internal decay

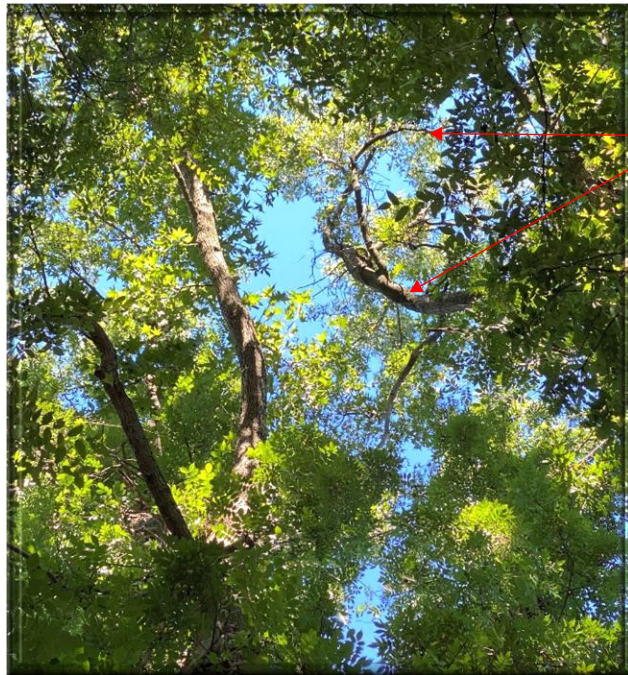
2. **White Oak - 31” dbh (Tag #47)** Good Condition
3. **Sweetgum - 35” below split (Tag #201)** 1 main leader choked by wisteria, wetwood – Poor Condition – **Request Not Specimen**

Wetwood / included bark at split



Massive choking vines in canopy



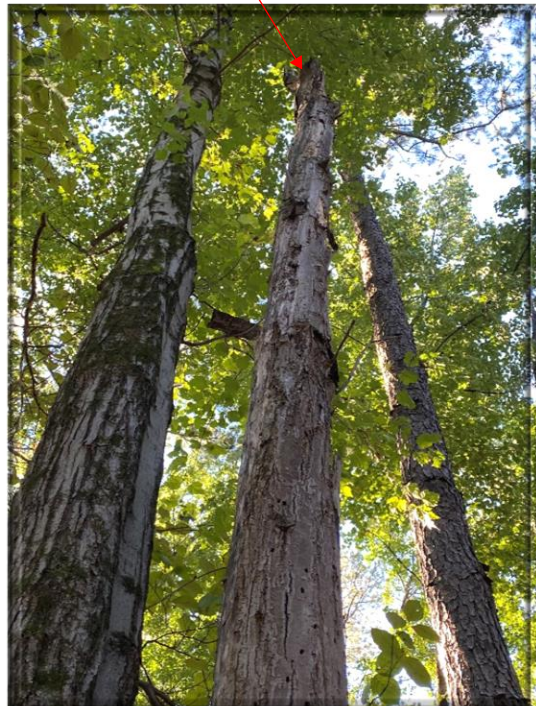


One main leader dead

- 4. **Sourwood - 10" dbh (Tag #202) Good Condition**
- 5. **Water Oak - 24" dbh (Tag #203) Good Condition**
- 6. **Maple - 25" dbh (Tag #204) Double trunk with one leader dead, obvious decay, included bark at split Poor Condition – Request Not Specimen**



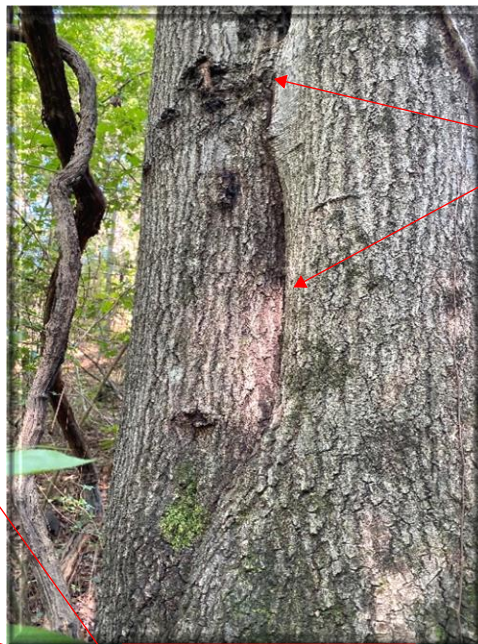
Dead leader



- 7. **Poplar - 25" dbh (Tag #205) Good Condition**



- 8. Poplar - 24" dbh (Tag #206) Good Condition
- 9. Poplar - 33" dbh (Tag #207) Good Condition
- 10. Water Oak - 24" dbh (Tag #208) Included bark at split with sporadic fusing above split – Poor structural integrity – Request Not Specimen

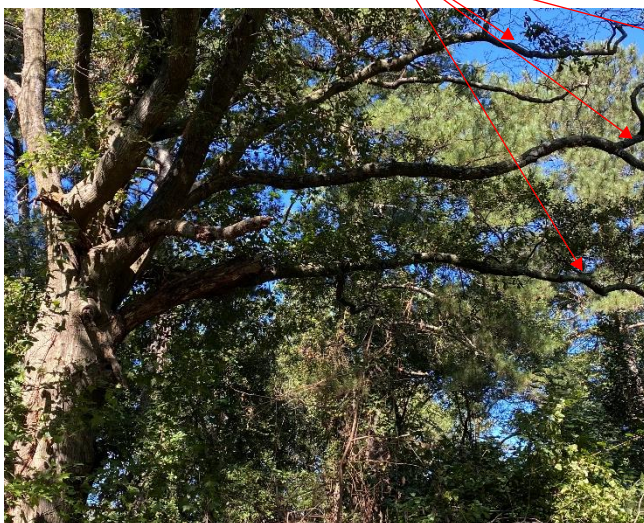


Fusing of leaders at various locations

Included bark

- 11. Water Oak - 35" dbh (Tag #209) Good Condition
- 12. Poplar - 24" dbh (Tag #210) Good Condition
- 13. Poplar - 28" dbh (Tag #211) Good Condition
- 14. Poplar - 34" dbh (Tag #3201) Good Condition
- 15. White Oak - 27" dbh (Tag #3202) Good Condition
- 16. Pine - 33" dbh (Tag #3203) Good Condition
- 17. Water Oak - 35" dbh (Tag #3204) 30% canopy dieback and several large dead branches, cavity at +/- 20', Poor Condition – Request Not Specimen

30%+ canopy dieback





18. **Sweetgum – 20+21” dbh (No Tag)** Included bark at split with poor structural integrity, covered in vines, Poor Condition – **Request Not Specimen**



Unable to get good photo of included bark at split due to choking vines

19. **Water Oak - 25” dbh (Tag #3205)** Good Condition