



ATL FY 2022 BOND LIST RECOMMENDATIONS

Background

The ATL is statutorily required to annually prepare and submit a list of projects of regional and state significance to the Governor's Office of Planning and Budget (OPB) and General Assembly for potential inclusion in the state bond package.

Project Eligibility

Projects included in the Bond List scenarios were required to meet the following criteria:



Project is included **in the ATL's adopted ARTP**

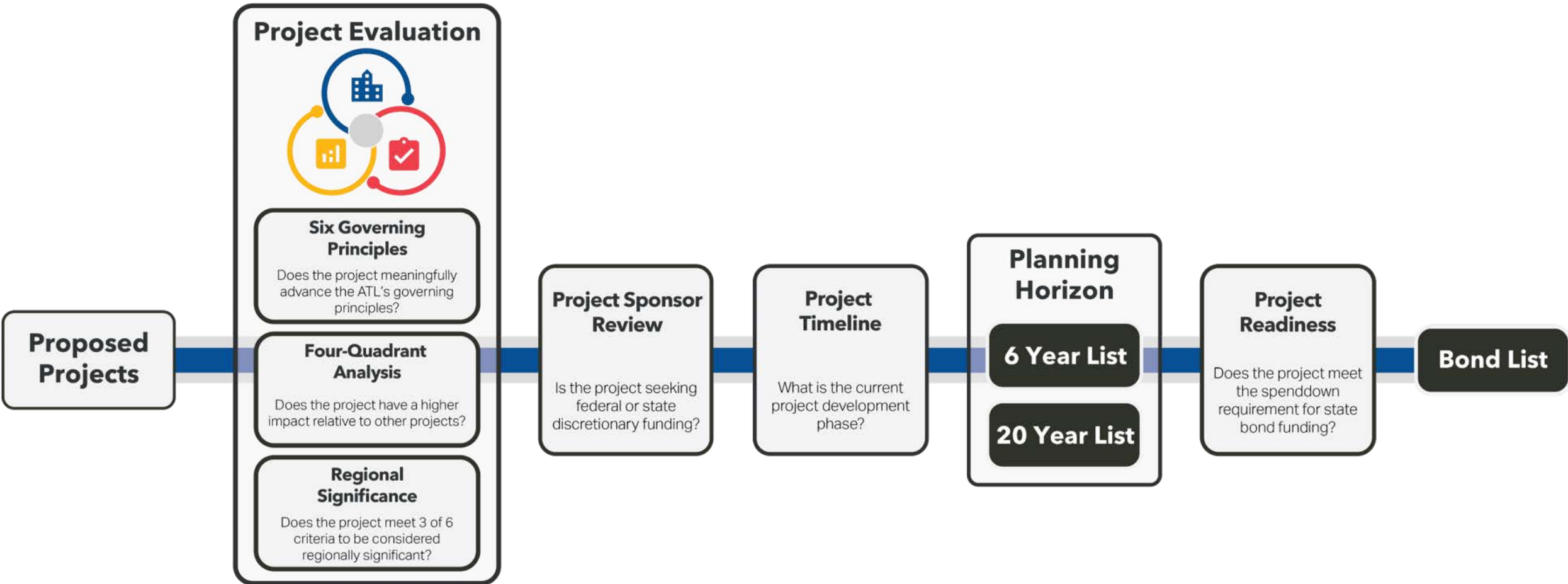


Project **performed well in Project Performance Framework**

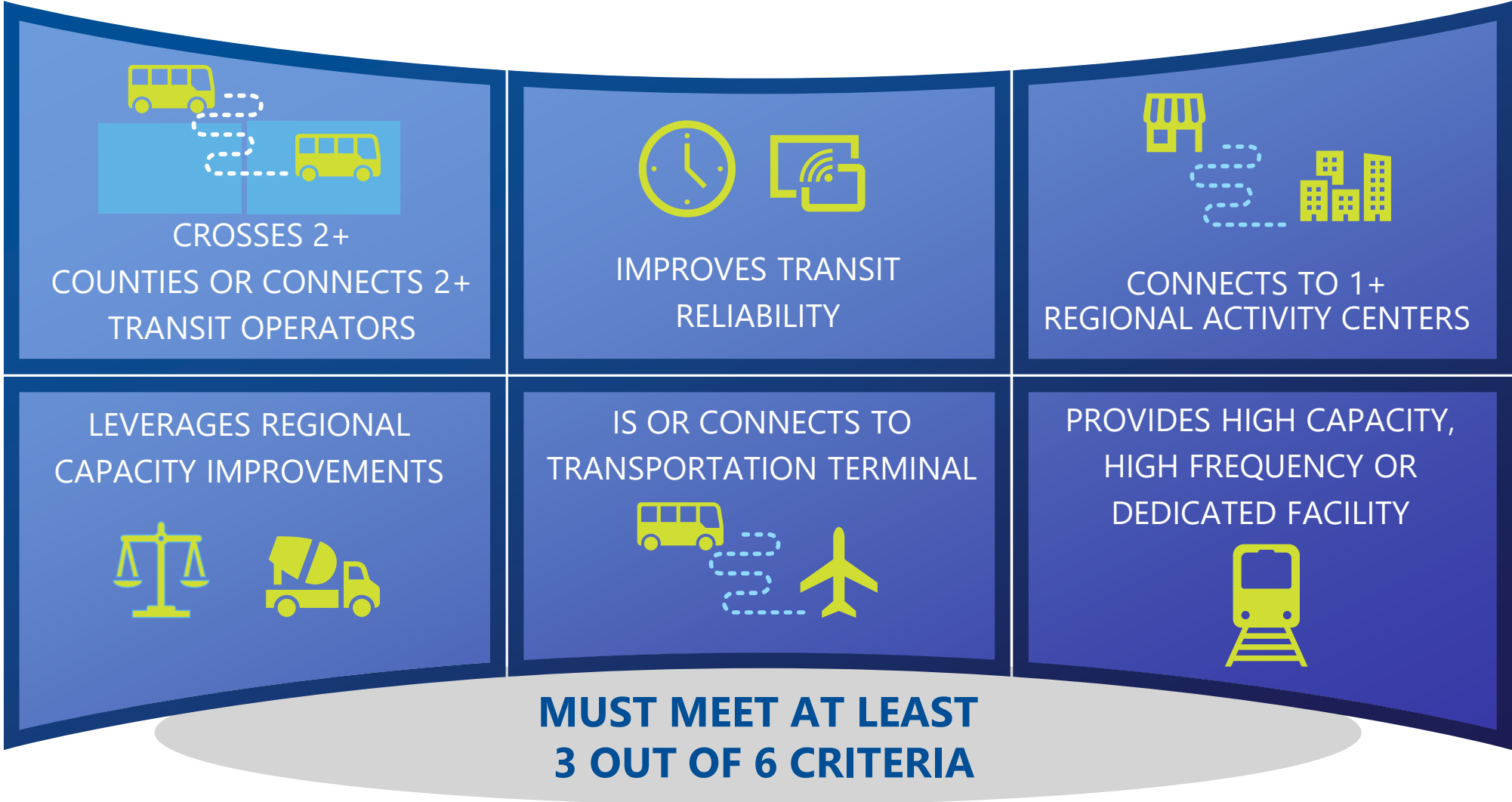


Project must **fully spend bond funds within 5 years** per state requirements (85% within 3 years)

Project Performance Framework



Regional Significance Definition



Regional Significance









Enhancement and expansion projects were required to meet three of the six criteria below to be considered “regionally significant”

Project Name	Crosses 2+ Counties or Connects 2+ Transit Operators	Improves Transit Reliability	Connects to 1+ Regional Activity Centers	Leverages Regional Mobility Improvements	Is or Connects to Transportation Terminal	Provides High Capacity Service
Capitol Ave/ Summerhill BRT	✓	✓			✓	✓
Clayton County Transit Initiative – BRT	✓	✓		✓	✓	✓
I-285 Transit in Express Lanes	✓	✓	✓	✓	✓	✓
Transit Signal Priority		✓	✓	✓	✓	
SR 316 Park-and-Rides and Commuter Express Service	✓	✓			✓	✓
Cumberland Transfer Center	✓		✓		✓	

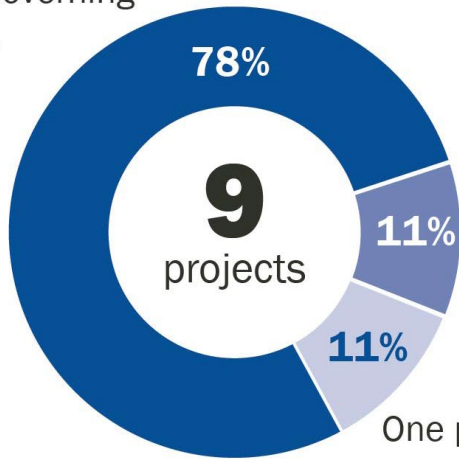
Governing Principles Alignment



Project Name	 Economic Development & Land Use	 Environmental Sustainability	 Equity	 Innovation	 Mobility & Access	 Return on Investment	Governing Principles Alignment
Capitol Ave/ Summerhill BRT	Strongly Aligned	Strongly Aligned	Strongly Aligned	Strongly Aligned	Strongly Aligned	Strongly Aligned	Strongly Aligned
Clayton County Transit Initiative – BRT	Strongly Aligned	Strongly Aligned	Strongly Aligned	Strongly Aligned	Strongly Aligned	Strongly Aligned	Strongly Aligned
I-285 Transit in Express Lanes	Strongly Aligned	Strongly Aligned	Strongly Aligned	Strongly Aligned	Strongly Aligned	Strongly Aligned	Strongly Aligned
Transit Signal Priority	Strongly Aligned	Strongly Aligned	Strongly Aligned	Strongly Aligned	Strongly Aligned	Strongly Aligned	Strongly Aligned
State Route 316 Park-and-Rides	Strongly Aligned	Strongly Aligned	Strongly Aligned	Strongly Aligned	Strongly Aligned	Strongly Aligned	Strongly Aligned
Cumberland Transfer Center	Strongly Aligned	Strongly Aligned	Strongly Aligned	Strongly Aligned	Strongly Aligned	Strongly Aligned	Strongly Aligned
Track Renovation Phase IV	Strongly Aligned	Strongly Aligned	Strongly Aligned	Strongly Aligned	Strongly Aligned	Strongly Aligned	Strongly Aligned
Station Rehabilitation – Program Schedule	Strongly Aligned	Strongly Aligned	Strongly Aligned	Well-Aligned	Strongly Aligned	Well-Aligned	Well-Aligned
ADA Compliant Sidewalks	Strongly Aligned	Well-Aligned	Strongly Aligned	Well-Aligned	Strongly Aligned	Well-Aligned	Aligned

Recommended Project List

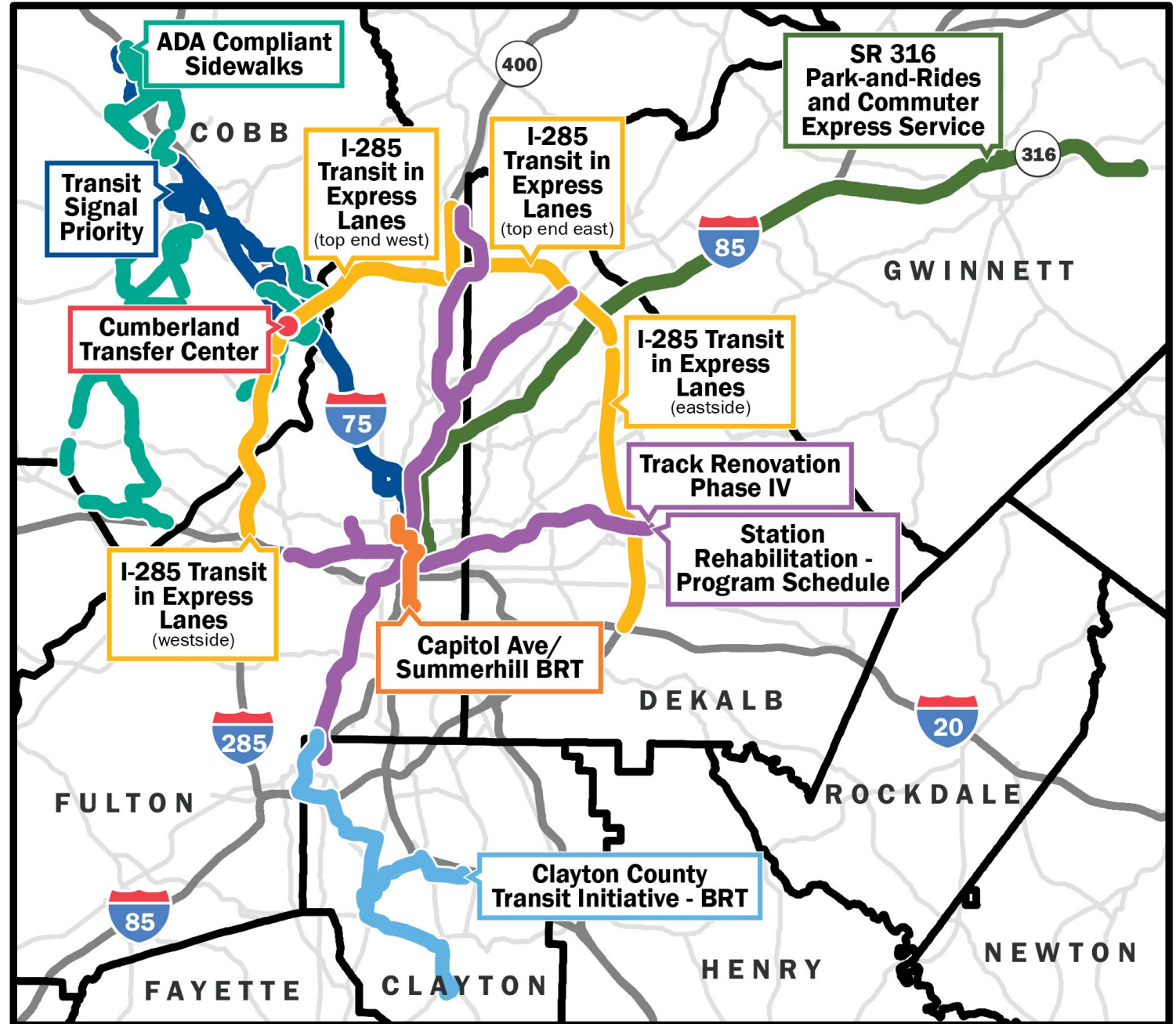
Seven projects are **strongly aligned** with ATL Governing Principles.



One project is **well aligned** with ATL Governing Principles.

One project is **aligned** with ATL Governing Principles.

- Tier 1: Strongly Aligned
- Tier 2: Well Aligned
- Tier 3: Aligned



ATL Bond Funding - Recommended Project List

Project Name	Sponsor	Description	Project Type	Quadrant	Total Capital Cost	Funding Phase	Estimated Construction Start Date
Capitol Ave/ Summerhill BRT	MARTA	BRT service from the Atlanta BeltLine on the south to the downtown core in the north.	Expansion	Q1: HI/LC	\$96M	Implementation	Q1 FY23
Clayton County Transit Initiative – BRT	MARTA	BRT along routes 191 and 196 connecting Hartsfield-Jackson Atlanta International Airport to Clayton County Justice Center.	Expansion	Q2a: HI/HC	\$375M	Design/ Engineering	Q3 FY23
I-285 Transit in Express Lanes	Various	High capacity transit from I-20 in DeKalb County, along the Top End of I-285 to I-20 in Cobb County with stations in Fulton County. Four segments correspond to the GDOT Express Lanes program.	Expansion	Q2a: HI/HC*	\$660M*	Design	Q3 FY23**
Transit Signal Priority	CobbLinc	Transit signal priority on routes from City of Marietta to Cumberland CID/Town Center CID.	Enhancement	Q1: HI/LC	\$500K	Implementation	Q2 FY22
State Route 316 Park-and-Rides and Commuter Express Service	GCT	Expansion of commuter service to SR 316, with two new park-and-rides and new route.	Expansion	Q1: HI/LC	\$35.875M	Implementation	Q1 FY22
Cumberland Transfer Center	CobbLinc	Development of new Cumberland Mall Transfer Center.	Enhancement	Q1: HI/LC	\$50M	ROW/Design/ Potential P3	Q2 FY25
Track Renovation Phase IV	MARTA	Fourth phase of MARTA's rail restoration efforts in restoring heavy rail lines as part of the Authority's ongoing State of Good Repair work and systemwide upgrades.	State of Good Repair	Q1: HI/LC	\$205M	Implementation	Ongoing
Station Rehabilitation – Program Schedule	MARTA	Rehabilitation for all 38 stations, staged six or seven a year until complete.	State of Good Repair	Q2a: HI/HC	\$685M	Implementation	Ongoing
ADA Compliant Sidewalks	CobbLinc	Sidewalks, curbs, ramps, and crosswalk in compliance with the ADA, along CobbLinc local bus routes within unincorporated Cobb County.	State of Good Repair	Q2b: LI/LC	\$6.25M	Implementation	Q2 FY22

* Does not include westside segment

** Date aligns with planned GDOT I-285 Top End East construction start date. All other project segments construction dates follow I-285 Top End East segment.