

SPECIMEN TREE SIZE	
OVERSTORY HARDWOODS	30 INCH
OVERSTORY SOFTWOODS	36 INCH
UNDERSTORY TREES	12 INCH

SPECIMEN SURVEY NOTE
 SPECIMEN TREE SURVEY & ASSESSMENT COMPLETED ON SEPT. 10, 2019 BY JAMES MAHONEY, ISA CERTIFIED ARBORIST SO-10291A.

KEY

- SPECIMEN TREE TO BE SAVED
- SPECIMEN TREE TO BE REMOVED
- NON SPECIMEN TREE TO BE SAVED
- NON SPECIMEN TREE TO BE REMOVED
- STRUCTURAL ROOT PLATE
- CRZ OF SPECIMEN TREE TO BE SAVED
- CRZ OF TREE TO BE REMOVED
- TREE SAVE AREA
- TREE PROTECTION FENCE
- LIMITS OF DISTURBANCE

- TREE PROTECTION NOTES**
- CONTACT THE COMMUNITY DEVELOPMENT DEPARTMENT (770-319-5387) TO ARRANGE A PRECONSTRUCTION CONFERENCE PRIOR TO ANY LAND DISTURBANCE. NO PERMIT SHALL BE ISSUED UNTIL PLANS ARE APPROVED & AN ON-SITE INSPECTION WITH CITY REPRESENTATIVES OCCURS.
 - ALL TREE PROTECTION MEASURES SHALL BE INSTALLED PRIOR TO GRADING OR THE REMOVAL OF IMPERVIOUS SURFACES OR STRUCTURES.
 - BUFFERS SHALL BE REPLANTED SUBJECT TO COMMUNITY DEVELOPMENT DEPARTMENT APPROVAL.
 - TREE SAVE FENCE FOR ENTIRE SITE MUST BE INSTALLED, INSPECTED & APPROVED PRIOR TO INSTALLATION OF EROSION CONTROL MEASURES. NO LAND DISTURBANCE OR DEMOLITION IS ALLOWED BEFORE TREE SAVE FENCING HAS BEEN INSPECTED & APPROVED BY COMMUNITY DEVELOPMENT DIRECTOR.
 - ALL TREES MUST BE PLANTED AT LEAST (10) FEET FROM ANY UTILITY LINES.
 - ALL EXISTING TREES, SPECIMEN AND NON-SPECIMEN, COUNTED FOR EDF CREDITS MUST BE FULLY PRESERVED DURING INDIVIDUAL LOT PERMITTING.

- SITE NOTES**
- TREE SURVEY TO LOCATE & ESTABLISH EXISTING TREE DENSITY ON SITE TO BE PROVIDED AT TIME OF LDP PERMIT.
 - ALL TREE REQUIREMENTS & CALCULATIONS TO BE REVISED ACCORDING TO TREE SURVEY INFORMATION TO BE PROVIDED.

- UTILITY NOTES**
- EXISTING UTILITIES TO BE PROVIDED UPON COMPLETION OF SURVEY.
 - PROPOSED UTILITIES TO BE PROVIDED AT TIME OF LDP.



360 STUDIO
 THE LANDSCAPE ARCHITECTURE STUDIO OF PLANNERS & ENGINEERS COLLABORATIVE
 350 RESEARCH COURT
 PEACHTREE CORNERS,
 GEORGIA 30092
 O: 770.451.2741
 PEC360STUDIO.COM

THIS DOCUMENT, ELECTRONIC AND REPRODUCTIONS, IS THE EXCLUSIVE PROPERTY OF 360 STUDIO AND IS NOT TO BE REPRODUCED OR COPIED WHOLE OR IN PART EXCEPT AS REQUIRED FOR THE PROJECT HEREIN. IT MAY NOT BE USED ON ANY OTHER PROJECT WITHOUT AN EXPRESSED WRITTEN AGREEMENT WITH 360 STUDIO.

PROJECT
PEBBLEBROOKE ROAD AT BUCKNER ROAD

BUCKNER ROAD
 CITY OF SMYRNA,
 COBB COUNTY,
 GEORGIA

LAND LOT 542
 DISTRICT 17
 FOR
 BEAZER HOMES

6455 SHILOH ROAD
 SUITE A
 ALPHARETTA, GA 30005

CONTACT:
 ADAM GUERCIA
 727-498-3330

REVISION	DATE

DRAWN BY: NR
 APPROVED BY: DM

PROJECT NUMBER
19102.00A

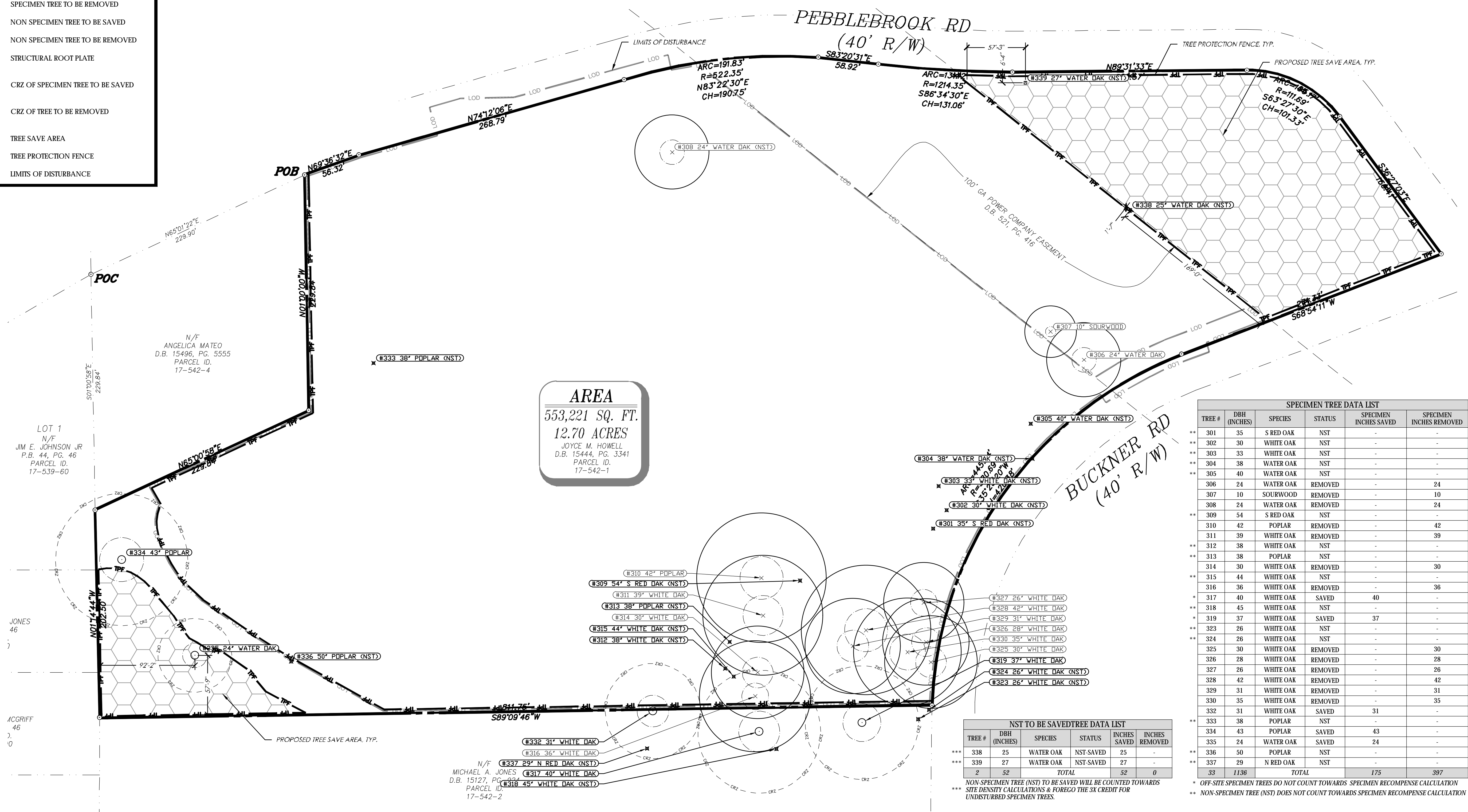
SEAL

SEAL IS ONLY VALID IF COUNTER SIGNED AND DATED WITH AN ORIGINAL SIGNATURE

DATE
SEPT 13, 2019

TITLE
REZONING TREE LOCATION & PROTECTION PLAN

SHEET
TPR. 1



AREA
 553,221 SQ. FT.
 12.70 ACRES
 JOYCE M. HOWELL
 D.B. 15444, PG. 3341
 PARCEL ID. 17-542-1

NST TO BE SAVED TREE DATA LIST

TREE #	DBH (INCHES)	SPECIES	STATUS	INCHES SAVED	INCHES REMOVED
338	25	WATER OAK	NST-MAINT	25	-
339	27	WATER OAK	NST-MAINT	27	-
2	52	TOTAL		52	0

SPECIMEN TREE DATA LIST

TREE #	DBH (INCHES)	SPECIES	STATUS	SPECIMEN INCHES SAVED	SPECIMEN INCHES REMOVED
** 301	35	S RED OAK	NST	-	-
** 302	30	WHITE OAK	NST	-	-
** 303	33	WHITE OAK	NST	-	-
** 304	38	WATER OAK	NST	-	-
** 305	40	WATER OAK	NST	-	-
306	24	WATER OAK	REMOVED	-	24
307	10	SOURWOOD	REMOVED	-	10
308	24	WATER OAK	REMOVED	-	24
** 309	54	S RED OAK	NST	-	-
310	42	POPLAR	REMOVED	-	42
311	39	WHITE OAK	REMOVED	-	39
** 312	38	WHITE OAK	NST	-	-
** 313	38	POPLAR	NST	-	-
314	30	WHITE OAK	REMOVED	-	30
** 315	44	WHITE OAK	NST	-	-
316	36	WHITE OAK	REMOVED	-	36
* 317	40	WHITE OAK	SAVED	40	-
* 318	45	WHITE OAK	NST	-	-
* 319	37	WHITE OAK	SAVED	37	-
** 323	26	WHITE OAK	NST	-	-
** 324	26	WHITE OAK	NST	-	-
325	30	WHITE OAK	REMOVED	-	30
326	28	WHITE OAK	REMOVED	-	28
327	26	WHITE OAK	REMOVED	-	26
328	42	WHITE OAK	REMOVED	-	42
329	31	WHITE OAK	REMOVED	-	31
330	35	WHITE OAK	REMOVED	-	35
332	31	WHITE OAK	SAVED	31	-
** 333	38	POPLAR	NST	-	-
334	43	POPLAR	SAVED	43	-
335	24	WATER OAK	SAVED	24	-
** 336	50	POPLAR	NST	-	-
** 337	29	N RED OAK	NST	-	-
33	1138	TOTAL		175	397

NON-SPECIMEN TREE (NST) TO BE SAVED WILL BE COUNTED TOWARDS SITE DENSITY CALCULATIONS & FOREGO THE 3X CREDIT FOR UNDISTURBED SPECIMEN TREES.

** OFF-SITE SPECIMEN TREES DO NOT COUNT TOWARDS SPECIMEN RECOMPENSE CALCULATION
 *** NON-SPECIMEN TREE (NST) DOES NOT COUNT TOWARDS SPECIMEN RECOMPENSE CALCULATION

NOTE: OFF-SITE BOUNDARY TREES WILL BE IMPACTED DUE TO GRADING. BOUNDARY TREE AGREEMENT WILL BE PROVIDED AT TIME OF LDP.

0 50 100 150 feet
 1" = 50'-0"

GEORGIA811
 www.Georgia811.com
 Know what's below. Call before you dig.

SPECIMEN TREE SIZE	
OVERSTORY HARDWOODS	30 INCH
OVERSTORY SOFTWOODS	36 INCH
UNDERSTORY TREES	12 INCH

SPECIMEN SURVEY NOTE
SPECIMEN TREE SURVEY & ASSESSMENT COMPLETED ON SEPT. 10, 2019 BY JAMES MAHONEY, ISA CERTIFIED ARBORIST SO-10291A.

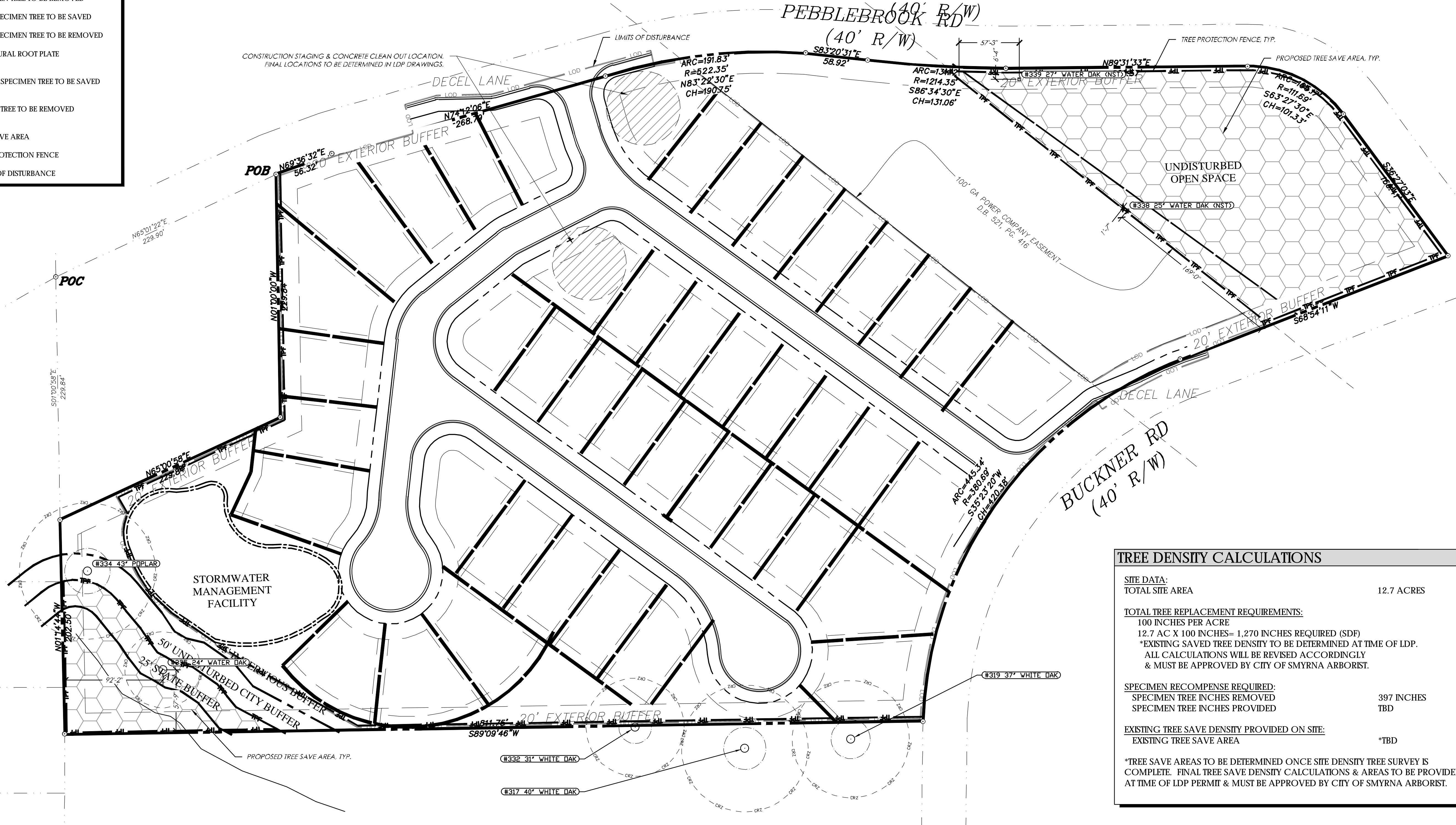
KEY

- SPECIMEN TREE TO BE SAVED
- ✕ SPECIMEN TREE TO BE REMOVED
- NON SPECIMEN TREE TO BE SAVED
- ⊗ NON SPECIMEN TREE TO BE REMOVED
- STRUCTURAL ROOT PLATE
- CRZ OF SPECIMEN TREE TO BE SAVED
- CRZ OF TREE TO BE REMOVED
- ▨ TREE SAVE AREA
- TREE PROTECTION FENCE
- LIMITS OF DISTURBANCE

- TREE PROTECTION NOTES**
1. CONTACT THE COMMUNITY DEVELOPMENT DEPARTMENT (770-319-5387) TO ARRANGE A PRECONSTRUCTION CONFERENCE PRIOR TO ANY LAND DISTURBANCE. NO PERMIT SHALL BE ISSUED UNTIL PLANS ARE APPROVED AND AN ON-SITE INSPECTION WITH CITY REPRESENTATIVES OCCURS.
 2. ALL TREE PROTECTION MEASURES SHALL BE INSTALLED PRIOR TO GRADING OR THE REMOVAL OF IMPERVIOUS SURFACES OR STRUCTURES.
 3. BUFFERS SHALL BE REPLANTED SUBJECT TO COMMUNITY DEVELOPMENT DEPARTMENT APPROVAL.
 4. TREE SAVE FENCE FOR ENTIRE SITE MUST BE INSTALLED, INSPECTED AND APPROVED PRIOR TO INSTALLATION OF EROSION CONTROL MEASURES. NO LAND DISTURBANCE OR DEMOLITION IS ALLOWED BEFORE TREE SAVE FENCING HAS BEEN INSPECTED AND APPROVED BY COMMUNITY DEVELOPMENT DIRECTOR.
 5. ALL TREES MUST BE PLANTED AT LEAST (10) FEET FROM ANY UTILITY LINES.
 6. ALL EXISTING TREES, SPECIMEN AND NON-SPECIMEN, COUNTED FOR EDF CREDITS MUST BE FULLY PRESERVED DURING INDIVIDUAL LOT PERMITTING.

- SITE NOTES**
1. TREE SURVEY TO LOCATE & ESTABLISH EXISTING TREE DENSITY ON SITE TO BE PROVIDED AT TIME OF LDP PERMIT.
 2. ALL TREE REQUIREMENTS & CALCULATIONS TO BE REVISED ACCORDING TO TREE SURVEY INFORMATION TO BE PROVIDED.

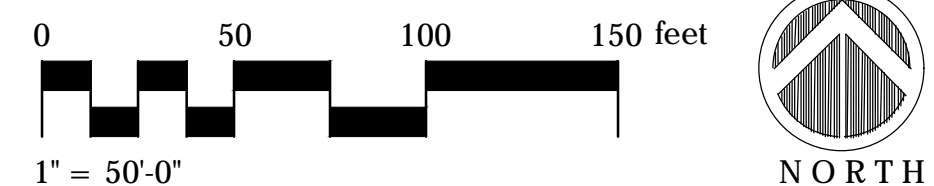
- UTILITY NOTES**
1. EXISTING UTILITIES TO BE PROVIDED UPON COMPLETION OF SURVEY.
 2. PROPOSED UTILITIES TO BE PROVIDED AT TIME OF LDP.



TREE DENSITY CALCULATIONS

SITE DATA:	
TOTAL SITE AREA	12.7 ACRES
TOTAL TREE REPLACEMENT REQUIREMENTS:	
100 INCHES PER ACRE	12.7 AC X 100 INCHES = 1,270 INCHES REQUIRED (SDF)
*EXISTING SAVED TREE DENSITY TO BE DETERMINED AT TIME OF LDP.	ALL CALCULATIONS WILL BE REVISED ACCORDINGLY & MUST BE APPROVED BY CITY OF SMYRNA ARBORIST.
SPECIMEN RECOMPENSE REQUIRED:	
SPECIMEN TREE INCHES REMOVED	397 INCHES
SPECIMEN TREE INCHES PROVIDED	TBD
EXISTING TREE SAVE DENSITY PROVIDED ON SITE:	
EXISTING TREE SAVE AREA	*TBD
*TREE SAVE AREAS TO BE DETERMINED ONCE SITE DENSITY TREE SURVEY IS COMPLETE. FINAL TREE SAVE DENSITY CALCULATIONS & AREAS TO BE PROVIDED AT TIME OF LDP PERMIT & MUST BE APPROVED BY CITY OF SMYRNA ARBORIST.	

NOTE: OFF-SITE BOUNDARY TREES WILL BE IMPACTED DUE TO GRADING. BOUNDARY TREE AGREEMENT WILL BE PROVIDED AT TIME OF LDP.



360 STUDIO
THE LANDSCAPE ARCHITECTURE STUDIO OF PLANNERS & ENGINEERS COLLABORATIVE

350 RESEARCH COURT
PEACHTREE CORNERS,
GEORGIA 30092
O: 770.451.2741
PEC360STUDIO.COM

THIS DOCUMENT, ELECTRONIC AND REPRODUCTIONS, IS THE EXCLUSIVE PROPERTY OF 360 STUDIO AND IS NOT TO BE REPRODUCED OR COPIED WHOLE OR IN PART EXCEPT AS REQUIRED FOR THE PROJECT HEREIN. IT MAY NOT BE USED ON ANY OTHER PROJECT WITHOUT AN EXPRESSED WRITTEN AGREEMENT WITH 360 STUDIO.

PROJECT: **PEBBLEBROOKE ROAD AT BUCKNER ROAD**

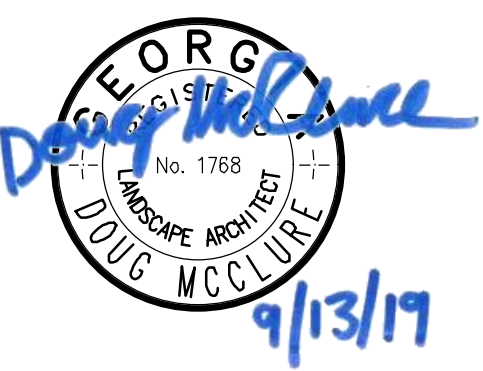
BUCKNER ROAD
CITY OF SMYRNA,
COBB COUNTY,
GEORGIA

LAND LOT 542
DISTRICT 17
FOR:
BEAZER HOMES

6455 SHILOH ROAD
SUITE A
ALPHARETTA, GA 30005

REVISION	DATE

DRAWN BY: NR
APPROVED BY: DM
PROJECT NUMBER: 19102.00A



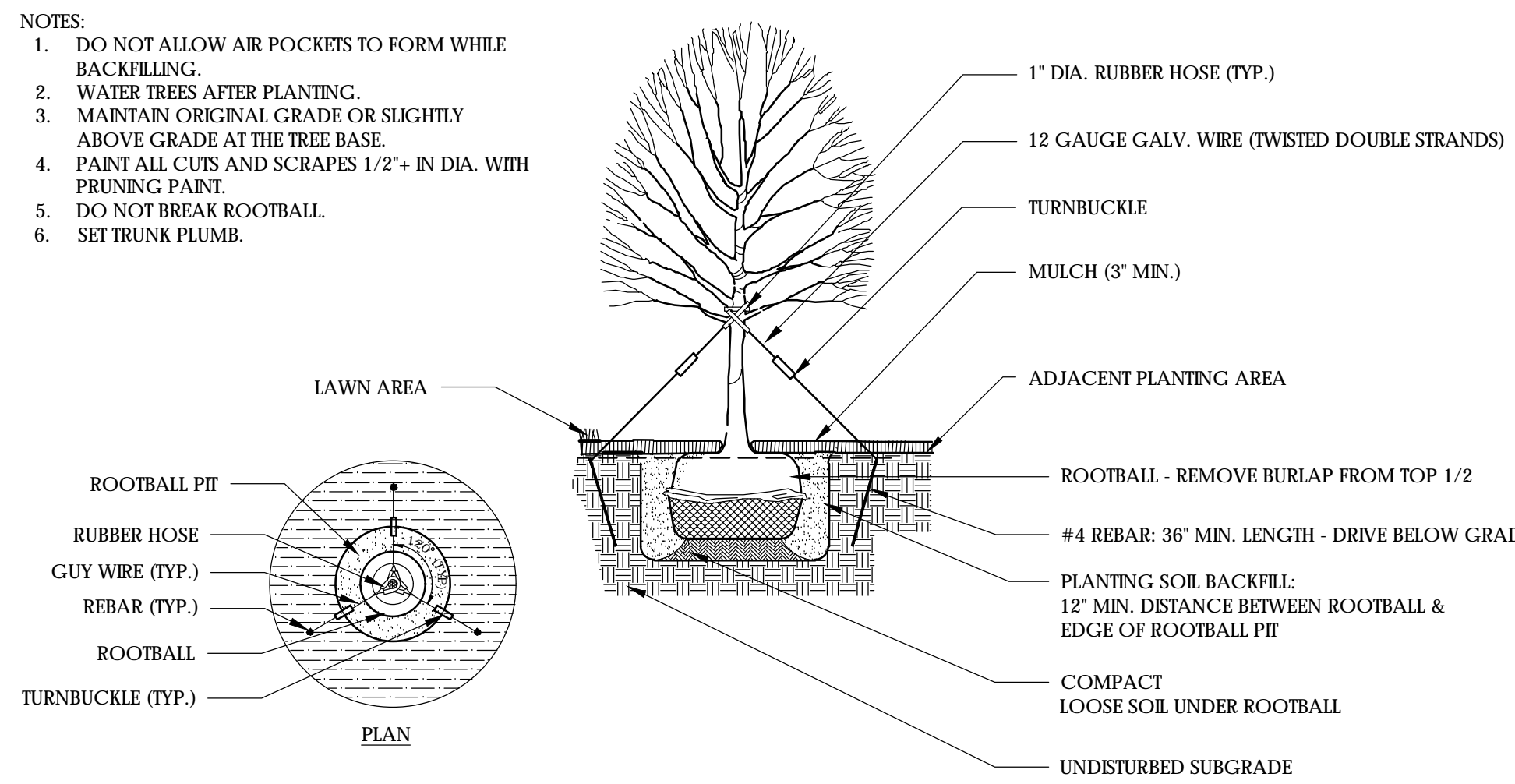
SEPT 13, 2019

TITLE: **REZONING TREE LOCATION & PROTECTION PLAN**



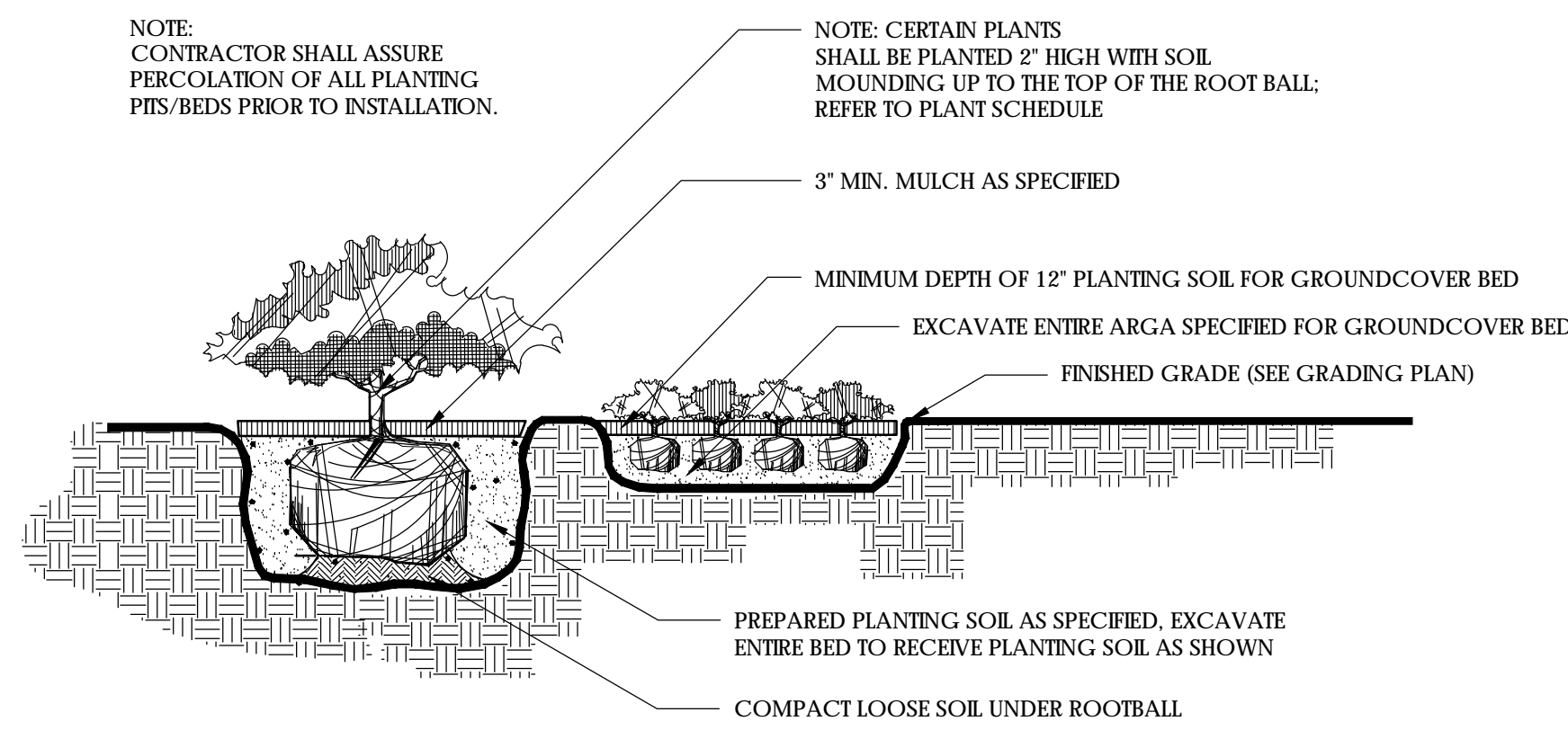
GENERAL PLANTING NOTES:

- 1. ALL PLANTS MUST BE HEALTHY, VIGOROUS MATERIAL... 2. ALL PLANTS FURNISHED SHALL BE FREE OF ANY INSECT INFESTATIONS... 3. ALL PLANTS MUST BE CONTAINER-GROWN OR BALLED AND BURLAPPED... 4. ALL PLANTS SHALL BE TRUE TO SPECIES AND VARIETY... 5. ALL TREES MUST BE SELF-SUPPORTING WITH STRAIGHT TRUNKS... 6. ALL TREES MUST BE GUYED OR STAKED AS SHOWN ON DETAILS... 7. SCARIFY OR LOOSEN THE COMPACTED ROOTBALLS OF CONTAINER GROWN PLANTS... 8. ALL PLANTS AND PLANTING AREAS MUST BE COMPLETELY MULCHED... 9. ALL PLANTS ARE SUBJECT TO THE APPROVAL OF THE LANDSCAPE ARCHITECT... 10. ALL PLANTS SHALL MEET STANDARDS SET FORTH IN 'AMERICAN STANDARD FOR NURSERY STOCK'... 11. SPECIFIC REQUIREMENTS CONCERNING THE VARIOUS SPECIES AND THE MANNER IN WHICH THEY ARE TO BE FURNISHED ARE SHOWN ON THE DRAWING AND PLANT LIST... 12. STOCK FURNISHED IN A SIZE RANGE SPECIFIED SHALL BE INTERPRETED TO MEAN THAT NOT LESS THAN 50% SHALL BE OF THE MAXIMUM SIZE SPECIFIED WITHIN EACH RANGE... 13. THE DETERMINING MEASUREMENTS FOR TREES SHALL BE THE CALIPER, HEIGHT AND SPREAD... 14. PRIOR TO CONSTRUCTION, THE LANDSCAPE CONTRACTOR SHALL BE RESPONSIBLE FOR LOCATING ALL UNDERGROUND UTILITIES... 15. THE LANDSCAPE CONTRACTOR IS RESPONSIBLE FOR VERIFYING ALL QUANTITIES SHOWN ON THESE PLANS BEFORE PRICING THE WORK... 16. THE LANDSCAPE CONTRACTOR IS RESPONSIBLE FOR MAINTAINING ALL PLANTING... 17. THE LANDSCAPE CONTRACTOR SHALL PROVIDE ONE YEAR WARRANTY FOR ALL PLANT MATERIAL... 18. THE OWNER AGREES TO PERFORM ALL LANDSCAPE MAINTENANCE... 19. AFTER DUG AT THE NURSERY SOURCE, ALL TREES IN LEAF SHALL BE ACCLIMATED... 20. ANY PLANT MATERIAL WHICH DIES, TURNS BROWN OR DEFOOLIATES... 21. LANDSCAPE CONTRACTOR TO LAYOUT ALL PLANT MATERIAL... 22. LANDSCAPE CONTRACTOR TO PROVIDE INSTALLED UNIT PRICE FOR ALL PLANT MATERIALS.



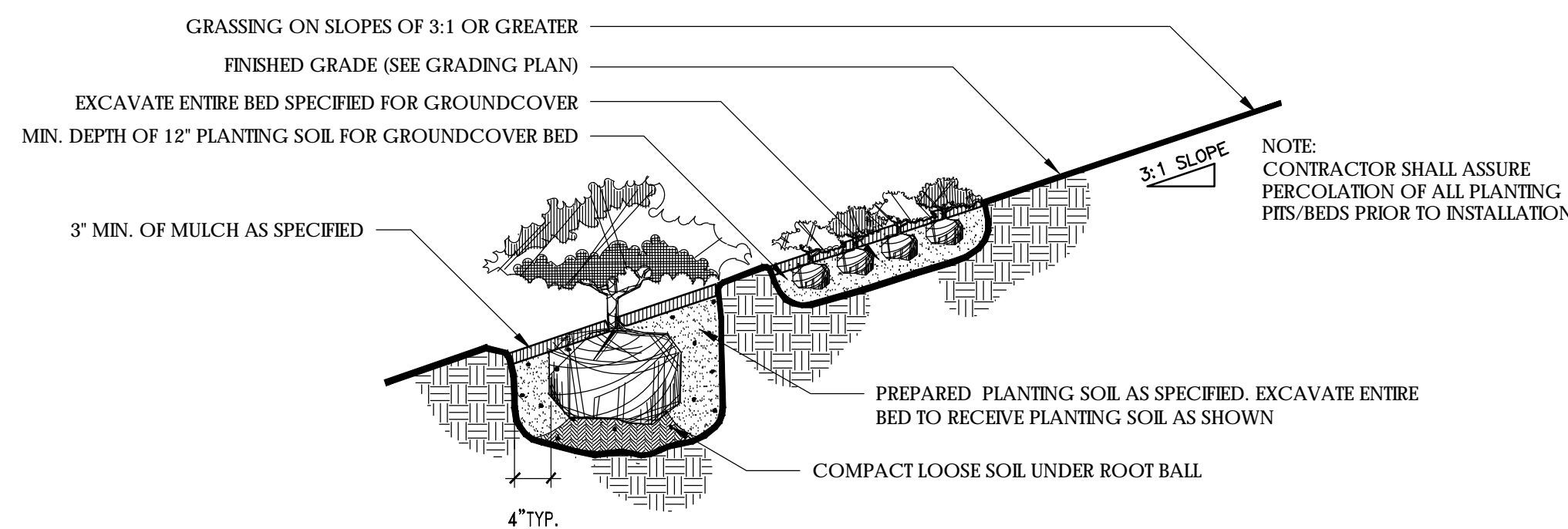
LARGE TREE PLANTING

N.T.S. TREES OVER 2 1/2" CALIPER



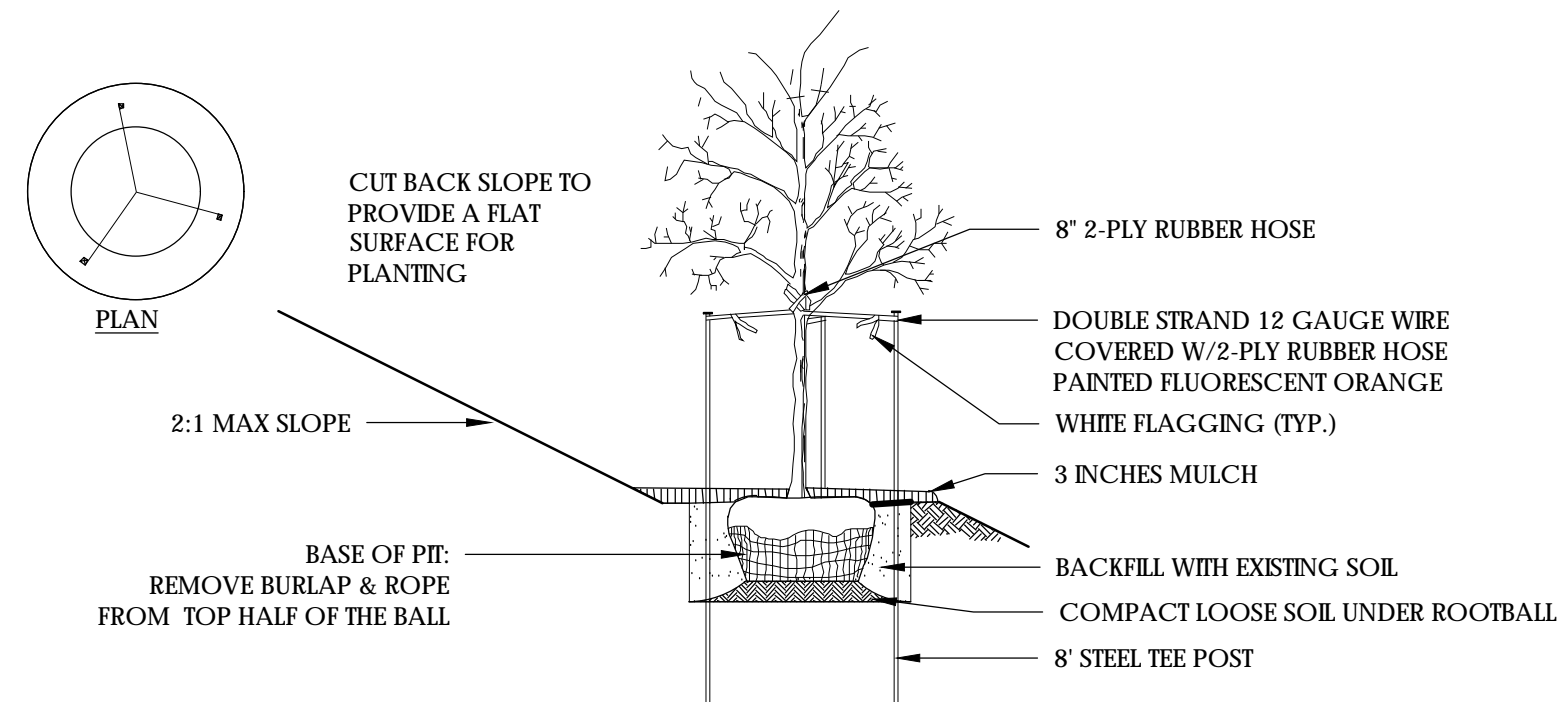
SHRUB AND GROUNDCOVER PLANTING

N.T.S.



SHRUB AND GROUNDCOVER PLANTING ON SLOPE

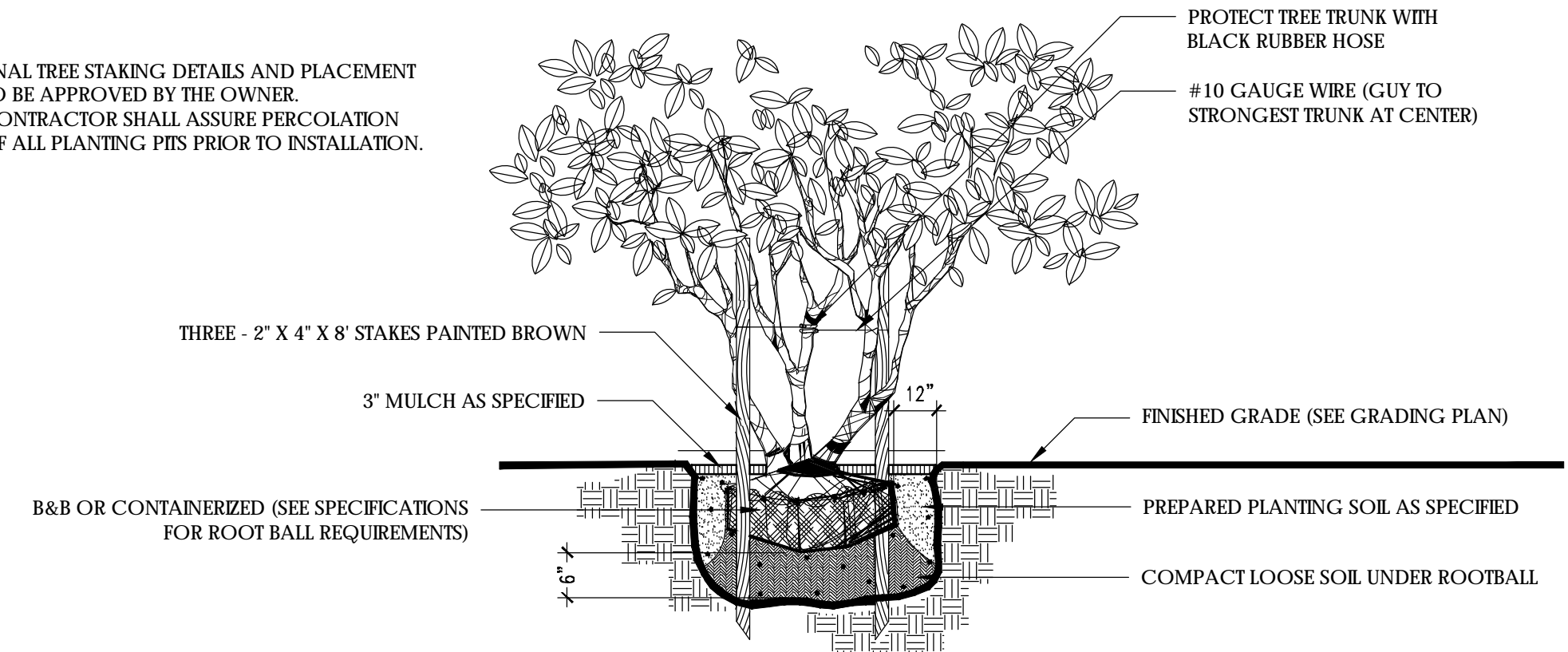
N.T.S.



TREE PLANTING ON (2:1) SLOPE

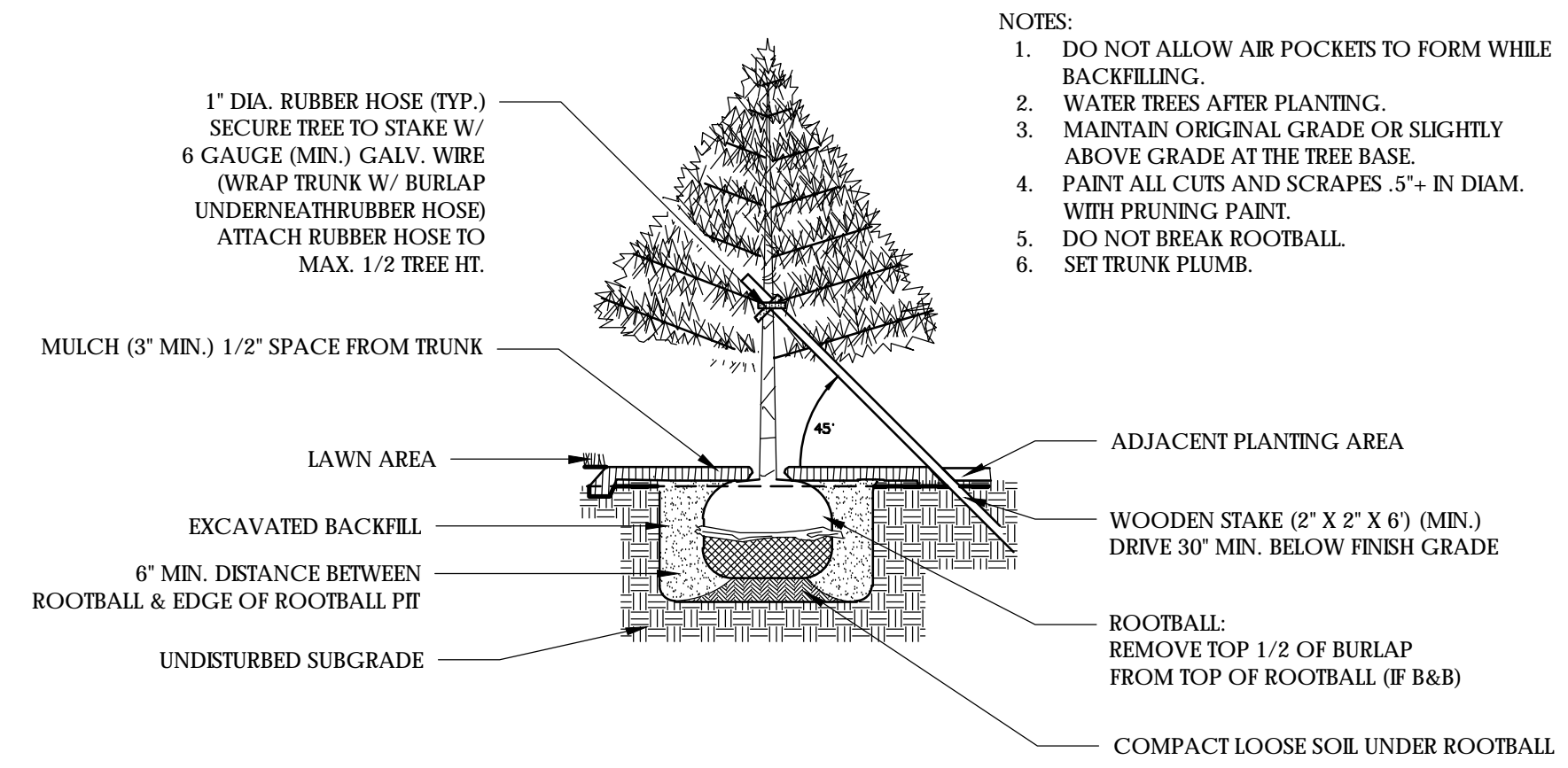
N.T.S.

- NOTE: 1. FINAL TREE STAKING DETAILS AND PLACEMENT TO BE APPROVED BY THE OWNER. 2. CONTRACTOR SHALL ASSURE PERCOLATION OF ALL PLANTING PITS PRIOR TO INSTALLATION.



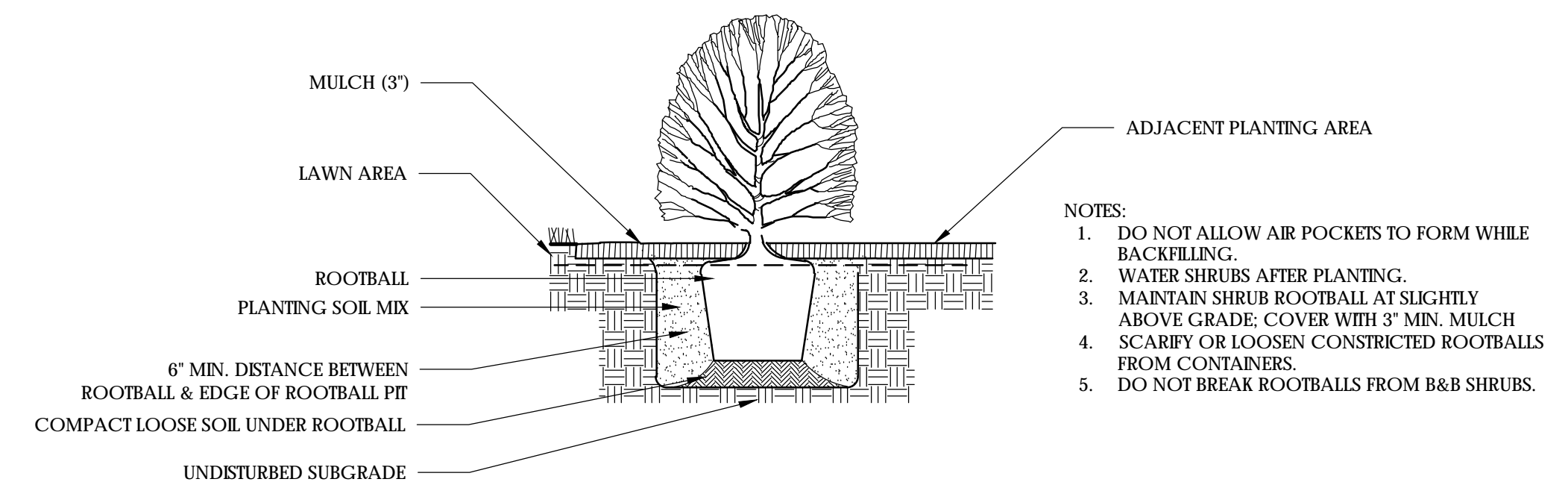
MULTI-TRUNK PLANTING

N.T.S.



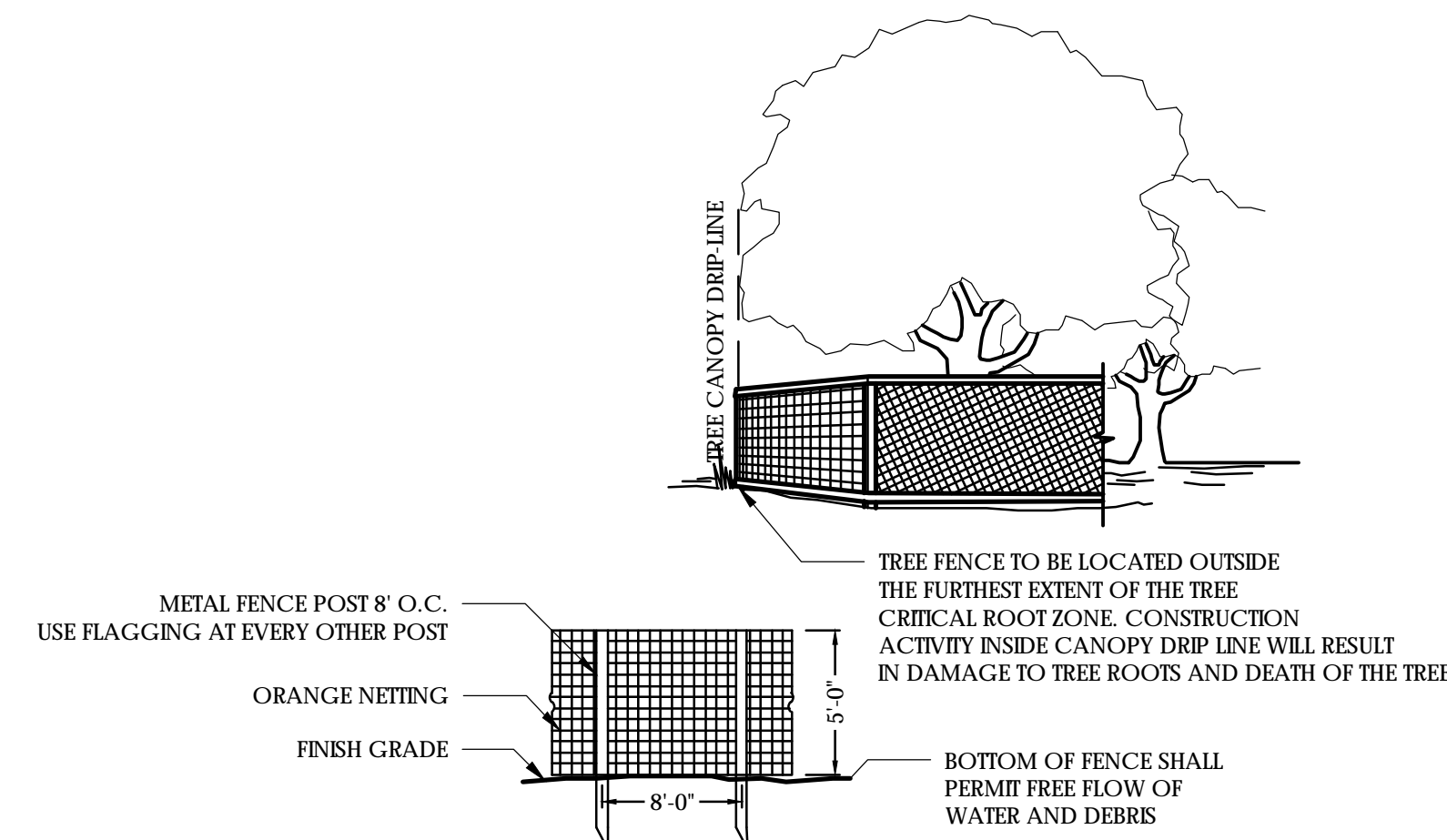
EVERGREEN TREE PLANTING

N.T.S.



SPECIMEN SHRUB PLANTING

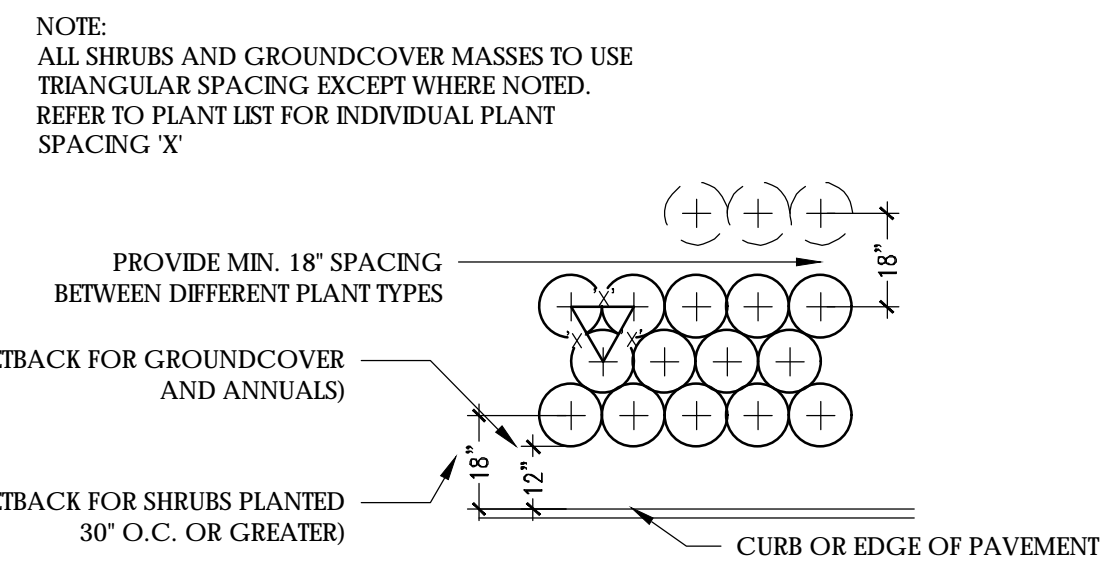
N.T.S.



TREE PROTECTION FENCE

N.T.S.

TREE PROTECTION AREA KEEP OUT! SIGNAGE WITH WARNING TEXT AND CONTACT INFORMATION FOR GEORGIA811.



TYPICAL PLANT SPACING

N.T.S.

360 STUDIO THE LANDSCAPE ARCHITECTURE STUDIO OF PLANNERS & ENGINEERS COLLABORATIVE 350 RESEARCH COURT PEACHTREE CORNERS, GEORGIA 30092

PEBBLEBROOKE ROAD AT BUCKNER ROAD BUCKNER ROAD CITY OF SMYRNA, COBB COUNTY, GEORGIA

LAND LOT 542 DISTRICT 17 FOR BEAZER HOMES 6455 SHILOH ROAD SUITE A ALPHARETTA, GA 30005

REVISION DATE table with columns for revision number and date.

CONTACT: ADAM GUERCIA 727-498-3330

DRAWN BY: NR APPROVED BY: DM PROJECT NUMBER 19102.00A

SEPT 13, 2019 TREE PLANTING DETAILS SHEET TPR.3