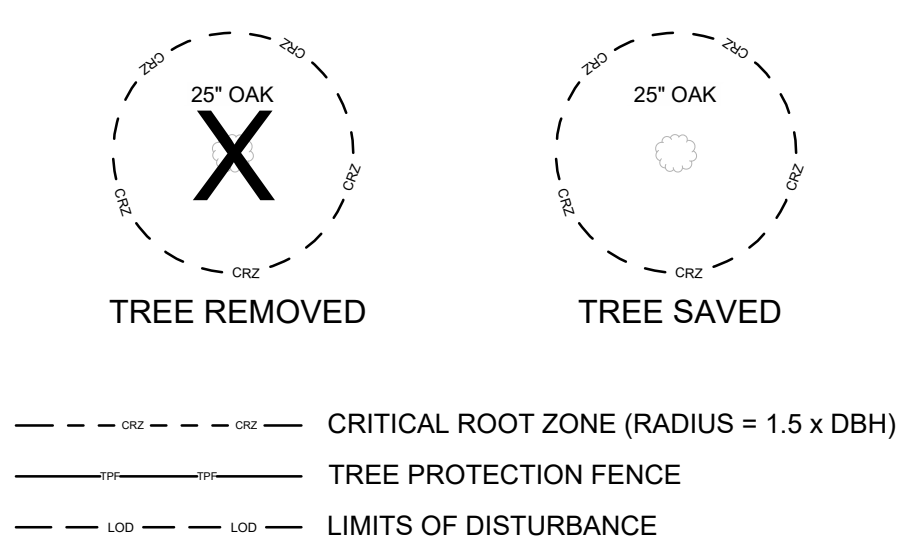


**TREE PROTECTION NOTES**

- 1.) TREE SAVE FENCE FOR THE ENTIRE SITE MUST BE TREE SAVE FENCE FOR THE ENTIRE SITE MUST BE INSTALLED, INSPECTED AND APPROVED PRIOR TO INSTALLATION OF EROSION CONTROL MEASURES.
- 2.) NO LAND DISTURBANCE OR DEMOLITION IS ALLOWED. NO LAND DISTURBANCE OR DEMOLITION IS ALLOWED BEFORE TREE SAVE FENCE HAS BEEN INSPECTED AND APPROVED BY COMMUNITY DEVELOPMENT DIRECTOR.
- 3.) CONTACT THE COMMUNITY DEVELOPMENT DEPARTMENT (770-319-5387) TO ARRANGE A PRE-CONSTRUCTION CONFERENCE PRIOR TO ANY LAND DISTURBANCE.
- 4.) NO PERMIT SHALL BE ISSUED UNTIL PLANS ARE APPROVED AND AN ON-SITE INSPECTION WITH CITY REPRESENTATIVES OCCURS.
- 5.) ALL TREE PROTECTION MEASURES SHALL BE INSTALLED. ALL TREE PROTECTION MEASURES SHALL BE INSTALLED PRIOR TO GRADING OR THE REMOVAL OF IMPERVIOUS SURFACES OR STRUCTURES.
- 6.) BUFFERS SHALL BE REPLANTED SUBJECT TO COMMUNITY DEVELOPMENT DEPARTMENT APPROVAL.

**SYMBOL AND LINETYPE LEGEND:**

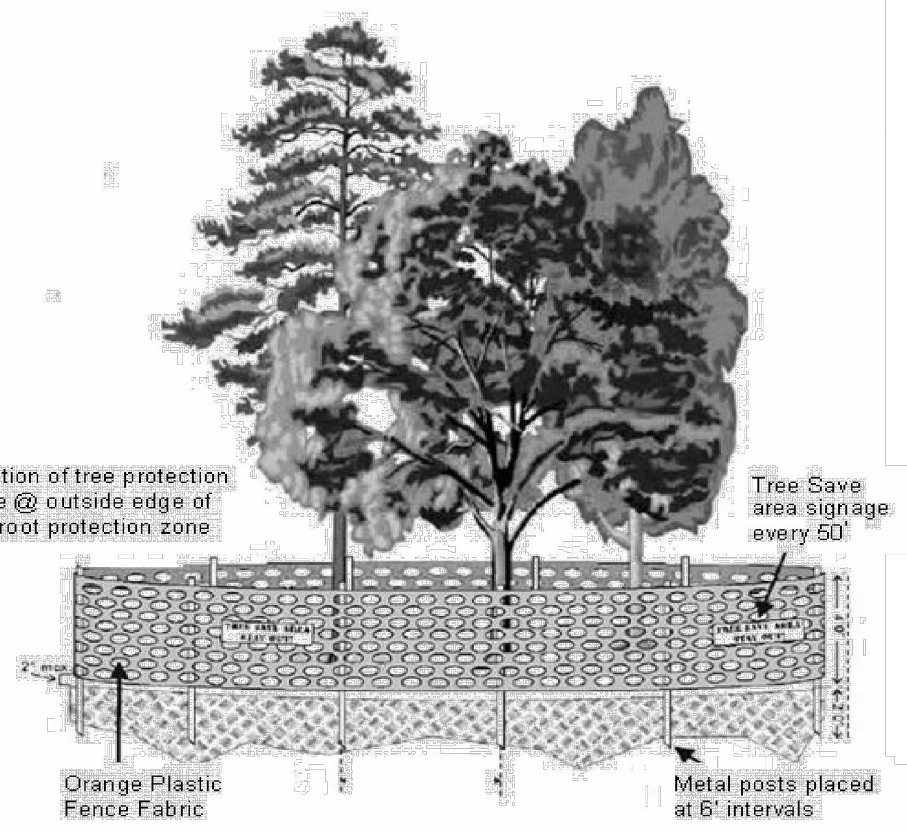


**OWNER/DEVELOPER**  
ONESTREET RESIDENTIAL  
2000 RIVEREDGE PARKWAY  
SUITE 450, ATLANTA, GA 30328  
ROB ROJAS / (678) 460-2876

**TREE PROTECTION TABLE**

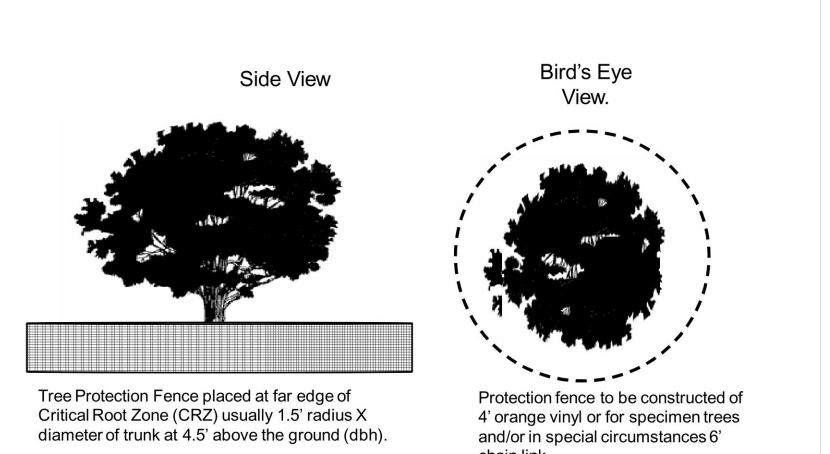
TREE PROTECTION CALCULATIONS	
SITE AREA:	3.10 ACRES
GAS EASEMENT AREA (NO TREES ALLOWED):	0.33 ACRES
BUFFER AREA (NO TREE SAVE CREDIT):	0.22 ACRES
TOTAL TREE PROTECTION AREA:	2.55 ACRES
SDF = 255 INCHES (2.55 x 100 UNITS)	
EDF = 161 INCHES	
EDF = 161 INCHES < SDF 255 INCHES	
94 INCHES OF RDF REQUIRED	
SPECIMEN TREES REMOVED	
24" OAK	
24" OAK	
24" OAK	
25" OAK	
25" OAK	
27" OAK	
31" OAK	
24/14" TULIP POPLAR	
218" TOTAL REMOVED	
TREES REMAINING (WITH < 20% CRZ DISTURBED)	
NO SPECIMEN TREES COUNTED	
119" HARDWOOD TREES (OUTSIDE OF BUFFER ZONE)	
42" EVERGREEN TREES (OUTSIDE OF BUFFER ZONE)	
0" SPECIMEN TREES REMAINING	
0" x 3" FOR SPECIMEN TREES = 0" EDF SPECIMEN TREES	
161" TOTAL NON-SPECIMEN TREES = 161" EDF TREES	

**Figure 2: Tree Protection Fencing for Non-Specimen Trees**

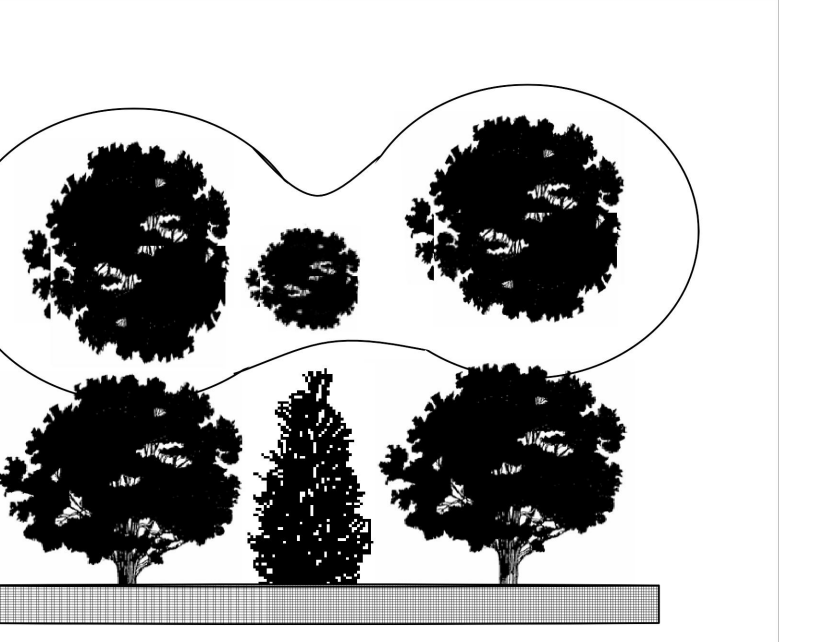


\*\*Specimen tree protection requires orange polyethylene fence be replaced with chain link.\*\*\*

**Figure 3: Tree Protection Fencing for a Single Non-Specimen Tree**



**Figure 4: Tree Protection Fencing for Multiple Non-Specimen Trees**



SEAL:

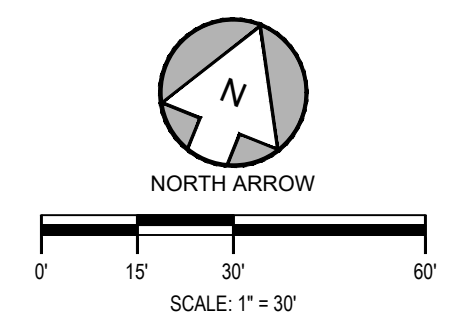


**DESIGN TEAM:**

DRAWN BY: CER  
DESIGNED BY: TKS  
REVIEWED BY: TKS



**SCALE & NORTH ARROW:**



JOB #: 087009  
DATE: SUBMITTAL DATE

**TREE PROTECTION PLAN**