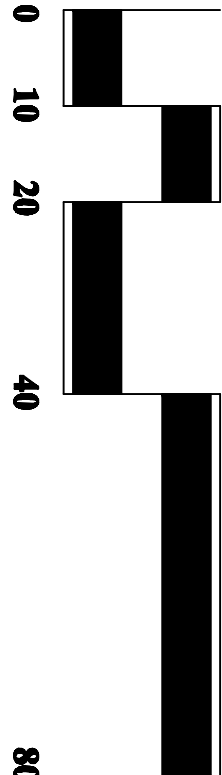


Tree Survey/Protection Plan - Sheet 2 of 4

1068 Banks Street  
City of Smyrna, Georgia      Land Lot 488, 17th District, 2nd Section

property owner:

Frank Pritchard  
Pritchard Brothers, Inc.  
3165 Greenfield Drive  
Marietta, Georgia 30068  
404-597-4120

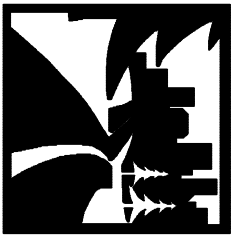


Scale: 1" = 20'

May 5, 2015

DGM

LAND PLANNING  
CONSULTANTS



9775 Cobb Place  
Bldg. Suite 212  
KENNESAW  
GA 30144  
770.514-9006  
FAX 514-9491

ARBORIST REPORT FOR:  
1068 Banks Street, Smyrna, Georgia  
Prepared For: Mr. Frank Pritchard

Visual Inspection only

Prepared by: T.J. Schell, LLC

Landscape Architects And Certified Arborists

2985 Gordy Parkway, Suite 422, Marietta, GA 30066

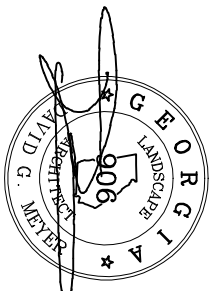
Fax 770-578-9126 Cell 770-361-2319

Terresa H. Eldredge, RLA, ISA, Certified Arborist

ISA SO-5442A

April 2, 2015

#1068 Banks St. – the two trees in the front yard have been well maintained and are in Good Condition. If removed, it is my opinion that the City will require recompense. (Total of 66" of recompense) Other conditions to note include: Several boundary trees (neighbors) that are in good condition. Based on view from #1068. Also, the two trees in the backyard are in good condition. These are tagged also in case you choose to look at a different footprint location for the proposed homes.



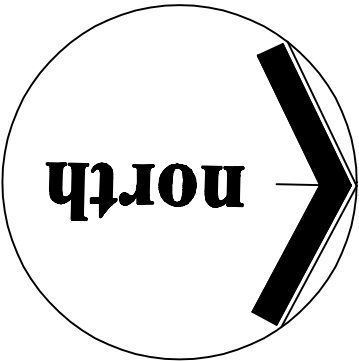
Tree Calculations

Site Area Calculation:  
Net Site Area = .53 AC

Tree Density Calculation:  
.53 AC x 100"/AC = 53 Total Inches Required  
EDF + RDF = SDF  
EDF = 168" (0" of non-specimens + 168" of specimens preserved)  
RDF = 0"  
168" + 0" = 168" SDF  
therefore density is satisfied

Specimen Tree Recompense Calculation:  
66 specimen trees have been removed. (see Tree Survey/Protection Plan)

Street Tree Requirement:  
3 trees are required per the street tree requirement (see Tree Replacement Plan). A total of 3 x 4" caliper trees have been provided. Street trees have been placed at every viable and appropriate location possible. The 3 trees are exclusive of density requirements but are being counted for recompense credit since density requirement has already been satisfied.



Removed Specimen Tree Inches

Tree Number	Tree Species	Tree Size DBH (in inches)	CRZ Radius (in feet)
32	White Oak	32	48
33	Red Oak	34	51
Total Inches:		66	

Preserved Specimen Tree Inches

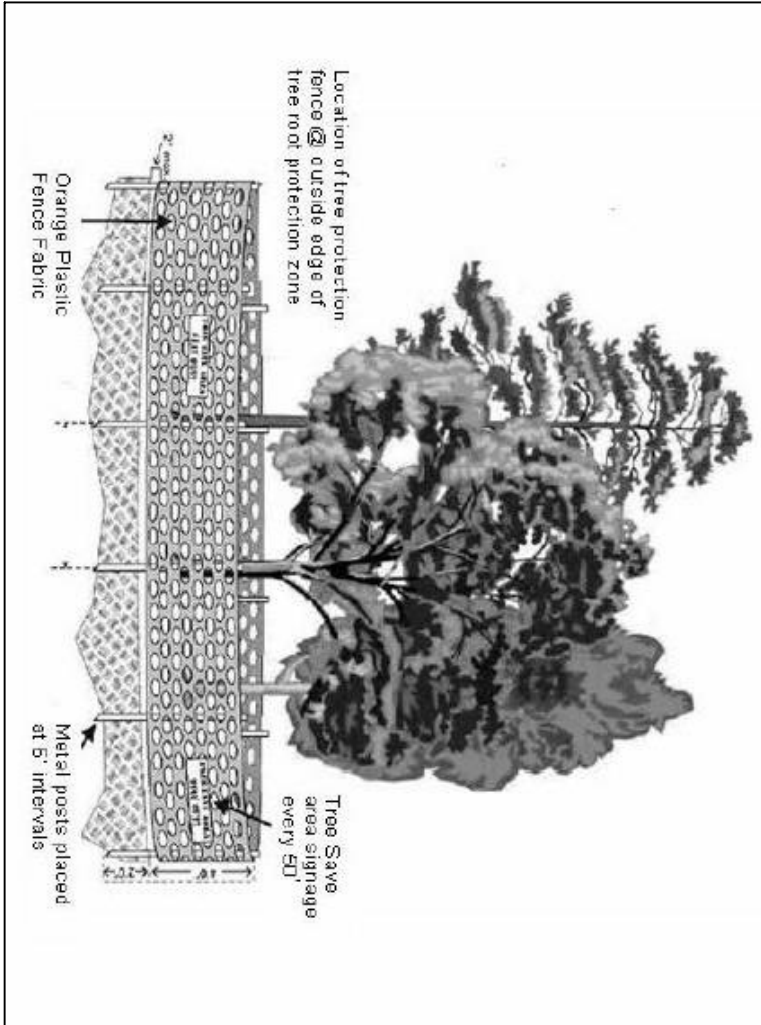
Tree Number	Tree Species	Tree Size DBH (in inches)	CRZ Radius
31	White Oak	24	36
34	White Oak	32	48

Total Inches: 56  
X 3 = 168

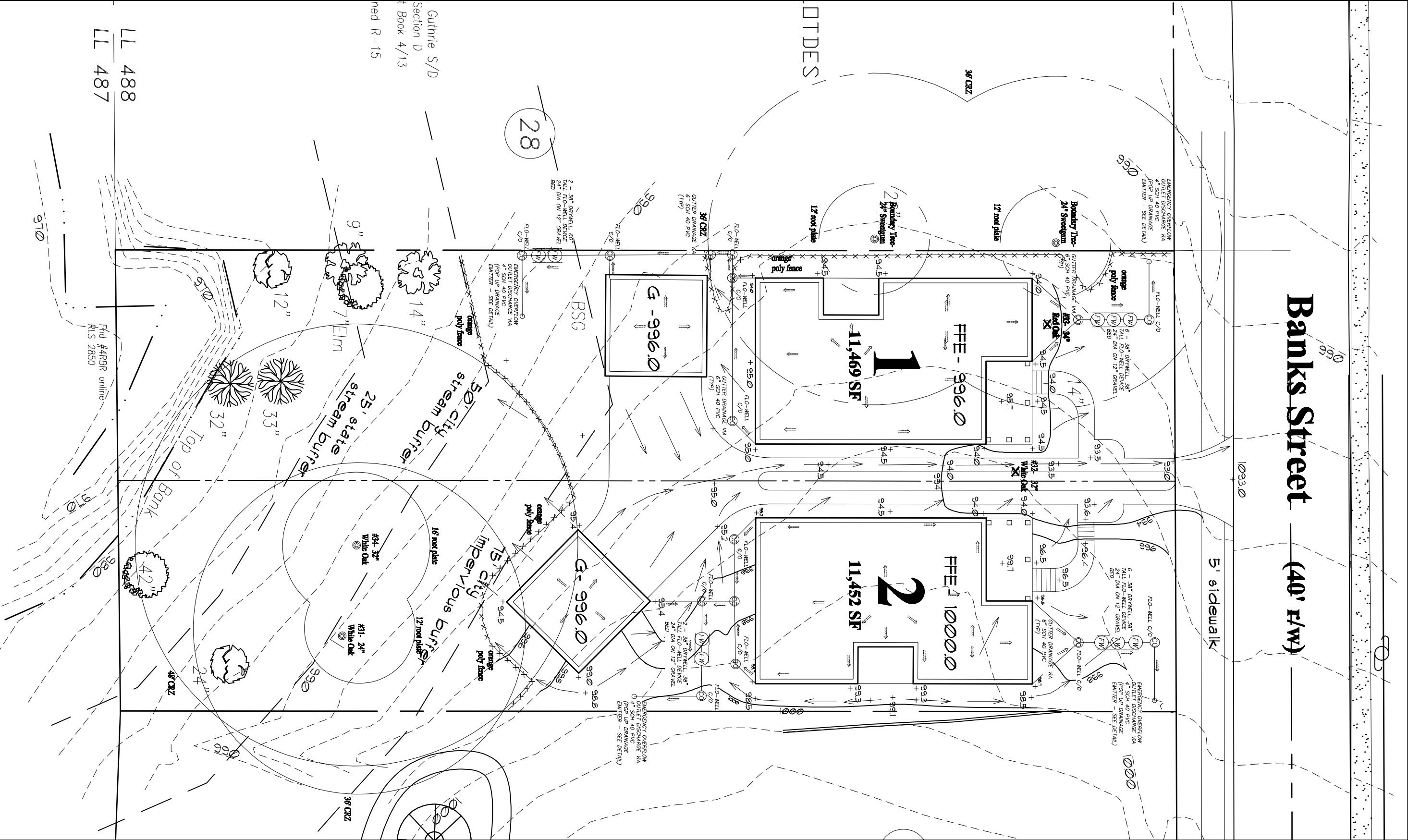
City of Smyrna Required Notes:

1. All existing trees, specimens and non-specimens, counted for EDF credits must be fully preserved during individual lot permitting.
  2. All trees must be planted at least 10' from any utility line.
  3. Tree save credit for entire site must be installable, inspected and approved or demolition is allowed before tree save fencing has been inspected and approved by Community Development Director.
  4. The CRZ of Specimen trees receiving a .25 credit shall be protected with a 3' x 4" chain link fence. Installation of tree save fences will involve trenching 4" of organic mulch over the CRZ and an above ground irrigation system.
  5. The Community Development Director must inspect the site before installation of specimen control fences. Land disturbance without a site inspection and approval by the Community Development Director will result in a "Stop Work Order" and fines.
  6. If tree survey inaccuracies are found on site, a stop work order will be issued until revised plans are approved and processed based on accurate information.
  7. The Community Development Director must inspect and approve the site before issuance of a Certificate of Occupancy.
  8. Trees agreed upon to be saved in the responsibility of the owner.
  9. A 3-4" layer of mulch will be required for the CRZ of Specimen Trees. Mulch must be applied prior to start of construction. Keep mulch at least 5' from the trunk of the tree.
  10. A minimum 3-4" layer of mulch will be required for all existing, non specimen, including street trees and parking lot trees. Mulch must be applied prior to start of construction. Mulch shall not be placed directly against tree trunks.
  11. All newly planted trees shall have stable root fences at finished grade. No digging work shall be allowed on planted trees. The upper 2/3 of the wire baskets, all burials, and staking shall be removed prior to installation.
  12. All trees shall be watered prior to install.
  16. All tree guys and stakes shall be removed from tree one year after planting or before.
- NO TRENCING ALLOWED IN TREE SAVE AREAS INCLUDING BRACIGATION.
- CONTACT THE COMMUNITY DEVELOPMENT DEPARTMENT (770) 319-5252 FOR MORE INFORMATION.
- A RECONSTRUCTION CONFERENCE PRIOR TO ANY LAND DISTURBANCE, NO PERMIT SHALL BE ISSUED UNTIL PLANS ARE APPROVED AND AN ON-CITY REPRESENTATIVE OCCURS.
- ALL TREE PROTECTION MEASURES SHALL BE INSTALLED PRIOR TO REMOVAL OF IMPERVIOUS SURFACES OR STRUCTURES.
- BUTTERS SHALL BE REPLANTED SUBJECT TO COMMUNITY DEVELOPMENT APPROVAL.

Tree Protection for Non-Specimen Trees



\*specimen tree protection requires orange polyethylene fence be replaced with chain link fence.

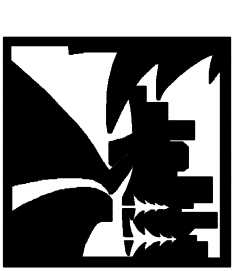


# 1068 Banks Street

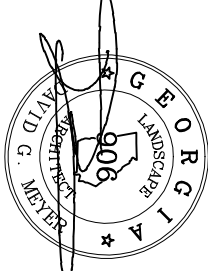
**Property owner:**

**Scale: 1" = 20'**  
**May 5, 2015**

LAND PLANNING  
CONSULTANTS



975 COBB PLACE  
BLVD, SUITE 212  
KENNESAW  
GA 30144  
770 514-9006  
FAX 514-9491



PLANT TYPE	LABEL QUAN.	COMMON NAME	BOTANICAL NAME	SIZE	HGT.	DENSITY "	RECOMP. "	TOTAL INCHES	MIN. SPACE % OF TOTAL
<b><u>Placement Trees</u></b>									
(street tree)	ZS	3	Zelkova	Zelkova serrata					
				4" Cal.	10'-12'	0	12	12	25' o.c.
		<u>3</u>				<u>0</u>	<u>12</u>	<u>12</u>	<u>100.0%</u>
<b><u>Removed Specimen Tree Inches</u></b>									
Tree	Tree	Tree Size DBH	CRZ	Radius (in feet)					
Number Species		(in inches)							
32 White Oak		32		48					
33 Red Oak		34		51					
<u>Total Inches:</u>								<u>66</u>	
<b><u>Preserved Specimen Tree Inches</u></b>									
Tree	Tree	Tree Size DBH	CRZ	Radius (in inches)					
Number Species		(in inches)							
31 White Oak		24		36					
34 White Oak		32		48					

# Tree List

# Tree Calculations

**Site Area Calculation:**  
**Net Site Area = .53 AC**

### Tree Density Calculation:

**EDF + RDF = SDF**

**RDF = 0"**

**therefore density is satisfied**

**therefore density is satisfied**

**Specimen Tree Recompense Calculation:**  
 66" of specimen trees have been removed. 12" have been replaced as shown on plan.

**54" of additional trees will have to be placed on site or provided as donation to City of Smyrna Tree Bank.**

**Street Tree Requirement:**

3 trees are required per the street tree requirement (see Tree Replacement Plan). A total of 3 x 4" caliper trees have been provided. Street trees have been placed at every viable and appropriate location possible. The 3 trees are exclusive of density requirements but are being counted for recompense credit since density requirement has already been satisfied.

Make sure all four wires have 3" slack and are removed about the first year.

Remove trunk wires and tags. Remove top 2/3rds of wire basket and all accessible burr/rape and twigs.

Backfill hole with native soil.

Cover the root ball with 4" of mulch will no mulch against the trunk.

