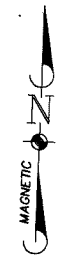
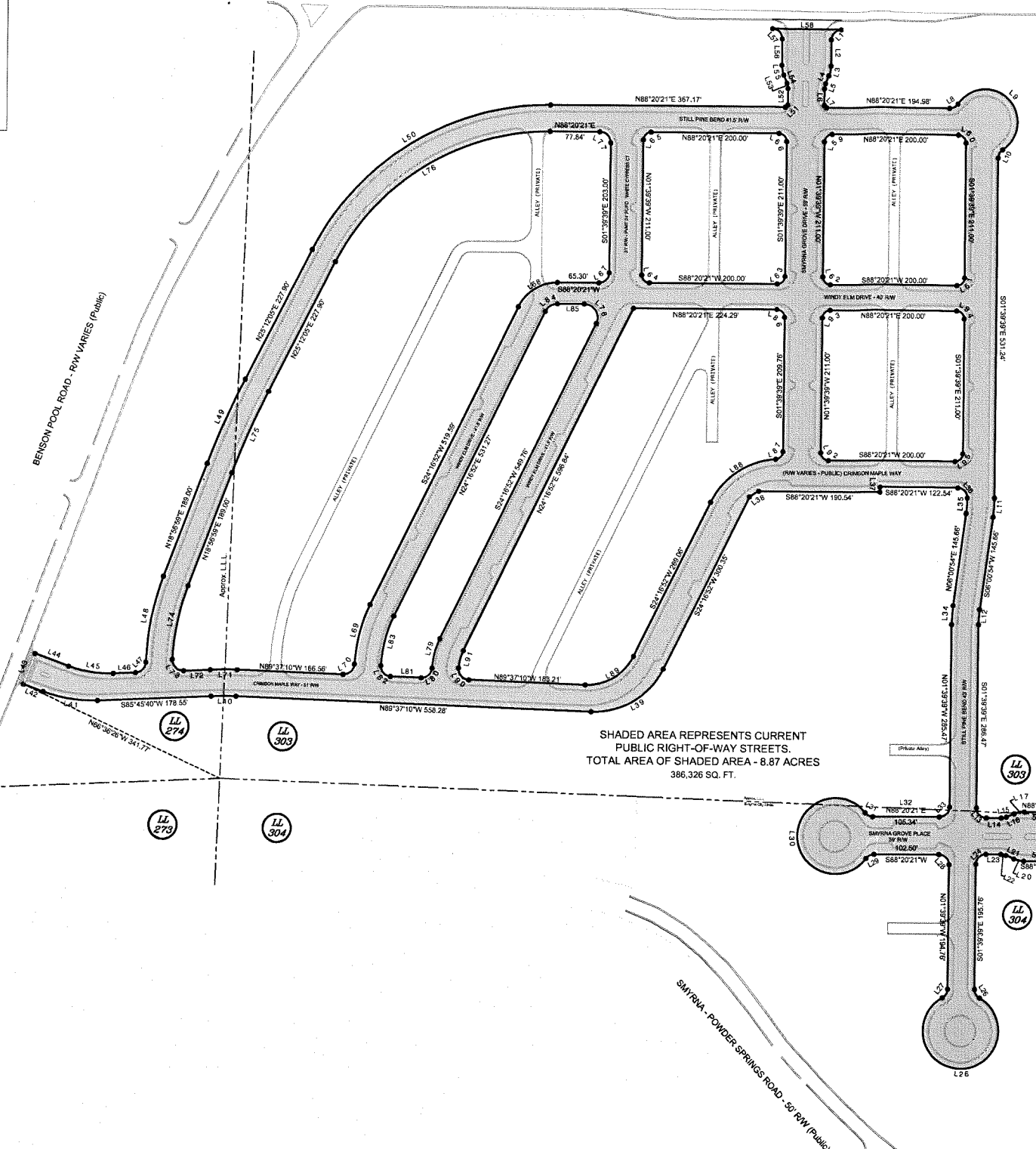


JONES SHAW ROAD - R/W VARIES (Public)



BENSON POOL ROAD - R/W VARIES (Public)

OLD CONCORD ROAD - R/W VARIES (Public)



SHADED AREA REPRESENTS CURRENT PUBLIC RIGHT-OF-WAY STREETS. TOTAL AREA OF SHADED AREA - 8.87 ACRES 386,326 SQ. FT.

Course	Bearing	Distance
L1	Rad: 15.50'	Arc: 24.37'
L2	Rad: 15.50'	Arc: 24.37'
L3	Rad: 15.50'	Arc: 24.37'
L4	Rad: 15.50'	Arc: 24.37'
L5	Rad: 15.50'	Arc: 24.37'
L6	Rad: 15.50'	Arc: 24.37'
L7	Rad: 15.50'	Arc: 24.37'
L8	Rad: 15.50'	Arc: 24.37'
L9	Rad: 15.50'	Arc: 24.37'
L10	Rad: 15.50'	Arc: 24.37'
L11	Rad: 15.50'	Arc: 24.37'
L12	Rad: 15.50'	Arc: 24.37'
L13	Rad: 15.50'	Arc: 24.37'
L14	Rad: 15.50'	Arc: 24.37'
L15	Rad: 15.50'	Arc: 24.37'
L16	Rad: 15.50'	Arc: 24.37'
L17	Rad: 15.50'	Arc: 24.37'
L18	Rad: 15.50'	Arc: 24.37'
L19	Rad: 15.50'	Arc: 24.37'
L20	Rad: 15.50'	Arc: 24.37'
L21	Rad: 15.50'	Arc: 24.37'
L22	Rad: 15.50'	Arc: 24.37'
L23	Rad: 15.50'	Arc: 24.37'
L24	Rad: 15.50'	Arc: 24.37'
L25	Rad: 15.50'	Arc: 24.37'
L26	Rad: 15.50'	Arc: 24.37'
L27	Rad: 15.50'	Arc: 24.37'
L28	Rad: 15.50'	Arc: 24.37'
L29	Rad: 15.50'	Arc: 24.37'
L30	Rad: 15.50'	Arc: 24.37'
L31	Rad: 15.50'	Arc: 24.37'
L32	Rad: 15.50'	Arc: 24.37'
L33	Rad: 15.50'	Arc: 24.37'
L34	Rad: 15.50'	Arc: 24.37'
L35	Rad: 15.50'	Arc: 24.37'
L36	Rad: 15.50'	Arc: 24.37'
L37	Rad: 15.50'	Arc: 24.37'
L38	Rad: 15.50'	Arc: 24.37'
L39	Rad: 15.50'	Arc: 24.37'
L40	Rad: 15.50'	Arc: 24.37'
L41	Rad: 15.50'	Arc: 24.37'
L42	Rad: 15.50'	Arc: 24.37'
L43	Rad: 15.50'	Arc: 24.37'
L44	Rad: 15.50'	Arc: 24.37'
L45	Rad: 15.50'	Arc: 24.37'
L46	Rad: 15.50'	Arc: 24.37'
L47	Rad: 15.50'	Arc: 24.37'
L48	Rad: 15.50'	Arc: 24.37'
L49	Rad: 15.50'	Arc: 24.37'
L50	Rad: 15.50'	Arc: 24.37'

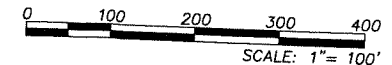
L53	Rad: 20.50'	Arc: 8.18'
L54	Rad: 20.50'	Arc: 8.18'
L55	Rad: 20.50'	Arc: 8.18'
L56	Rad: 20.50'	Arc: 8.18'
L57	Rad: 20.50'	Arc: 8.18'
L58	Rad: 20.50'	Arc: 8.18'
L59	Rad: 20.50'	Arc: 8.18'
L60	Rad: 20.50'	Arc: 8.18'
L61	Rad: 20.50'	Arc: 8.18'
L62	Rad: 20.50'	Arc: 8.18'
L63	Rad: 20.50'	Arc: 8.18'
L64	Rad: 20.50'	Arc: 8.18'
L65	Rad: 20.50'	Arc: 8.18'
L66	Rad: 20.50'	Arc: 8.18'
L67	Rad: 20.50'	Arc: 8.18'
L68	Rad: 20.50'	Arc: 8.18'
L69	Rad: 20.50'	Arc: 8.18'
L70	Rad: 20.50'	Arc: 8.18'
L71	Rad: 20.50'	Arc: 8.18'
L72	Rad: 20.50'	Arc: 8.18'
L73	Rad: 20.50'	Arc: 8.18'
L74	Rad: 20.50'	Arc: 8.18'
L75	Rad: 20.50'	Arc: 8.18'
L76	Rad: 20.50'	Arc: 8.18'
L77	Rad: 20.50'	Arc: 8.18'
L78	Rad: 20.50'	Arc: 8.18'
L79	Rad: 20.50'	Arc: 8.18'
L80	Rad: 20.50'	Arc: 8.18'
L81	Rad: 20.50'	Arc: 8.18'
L82	Rad: 20.50'	Arc: 8.18'
L83	Rad: 20.50'	Arc: 8.18'
L84	Rad: 20.50'	Arc: 8.18'
L85	Rad: 20.50'	Arc: 8.18'
L86	Rad: 20.50'	Arc: 8.18'
L87	Rad: 20.50'	Arc: 8.18'
L88	Rad: 20.50'	Arc: 8.18'
L89	Rad: 20.50'	Arc: 8.18'
L90	Rad: 20.50'	Arc: 8.18'
L91	Rad: 20.50'	Arc: 8.18'
L92	Rad: 20.50'	Arc: 8.18'
L93	Rad: 20.50'	Arc: 8.18'
L94	Rad: 20.50'	Arc: 8.18'
L95	Rad: 20.50'	Arc: 8.18'

NOTES:

- 1.) FIELD DATA: CLOSURE PRECISION 1/86,569' - ANGULAR ERROR = 04.75" A.
- 2.) MEASUREMENTS WERE TAKEN WITH 1/2" LEICA TS-2P ON 1-29-2019 AND WERE BALANCED USING THE COMPASS RULE.
- 3.) PLAT PRECISION: 1/100,000'.

This plat is a retracement of an existing parcel or parcels of land and does not subdivide or create a new parcel or make any changes to any real property boundaries. The recording information of the documents, maps, plats, or other instruments which created the parcel or parcels is stated herein. RECORDATION OF THIS PLAT DOES NOT IMPLY APPROVAL OF ANY LOCAL JURISDICTION, AVAILABILITY OF PERMITS, COMPLIANCE WITH LOCAL REGULATIONS OR REQUIREMENTS, OR SUITABILITY FOR ANY USE OR PURPOSE OF THE LAND. Furthermore, the undersigned land surveyor certifies that this plat complies with the minimum technical standards for property surveys in Georgia as set forth in the rules and regulations of the Georgia Board of Registration for Professional Engineers and Land Surveyors and as set forth in O.C.G.A. Section 15-6-67.

William J. Gilbert
 William J. Gilbert Co., P.L.L.C. RLS # 2643
 Dated: December 2, 2019



Landtec
 Surveying
 205 WILLIAMS BRIDGE ROAD,
 TOCCOA, GEORGIA 30577
 PHONE: (678)780-8832

RIGHT-OF-WAY SURVEY FOR:
SMYRNA GROVE
HOMEOWNERS ASSOCIATION
 LAND LOTS 274, 303 & 304, 17TH DISTRICT, 2ND SECTION
 CITY OF SMYRNA
 COBB COUNTY, GEORGIA
 12/02/2019

CC: WJG
 DRAWN BY: WJG
 SCALE: 1" = 100'
 PROJECT NO. - 19-078
 SHEET NO. 1 OF 1