

Tree Survey and Protection Plan - page 2 of 3

BaeBrooke Village

City of Smyrna, Georgia, Land Lot 632, 17th District

prepared for:

BaeBrooke, LLC

Tree Calculations

Site Area Calculation:
Net Site Area = 1.23 AC

Tree Density Calculation:
1.23 AC x 100"/AC = 123 Total Inches Required

EDF + RDF = SDF

EDF = 107" (107" of non-specimens + 0" of specimens preserved)
RDF = 32" (8 x 4" cal. street trees = 32" + additional trees added elsewhere on site)

107" + 32" = 139" SDF
therefore density is satisfied

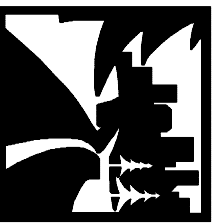
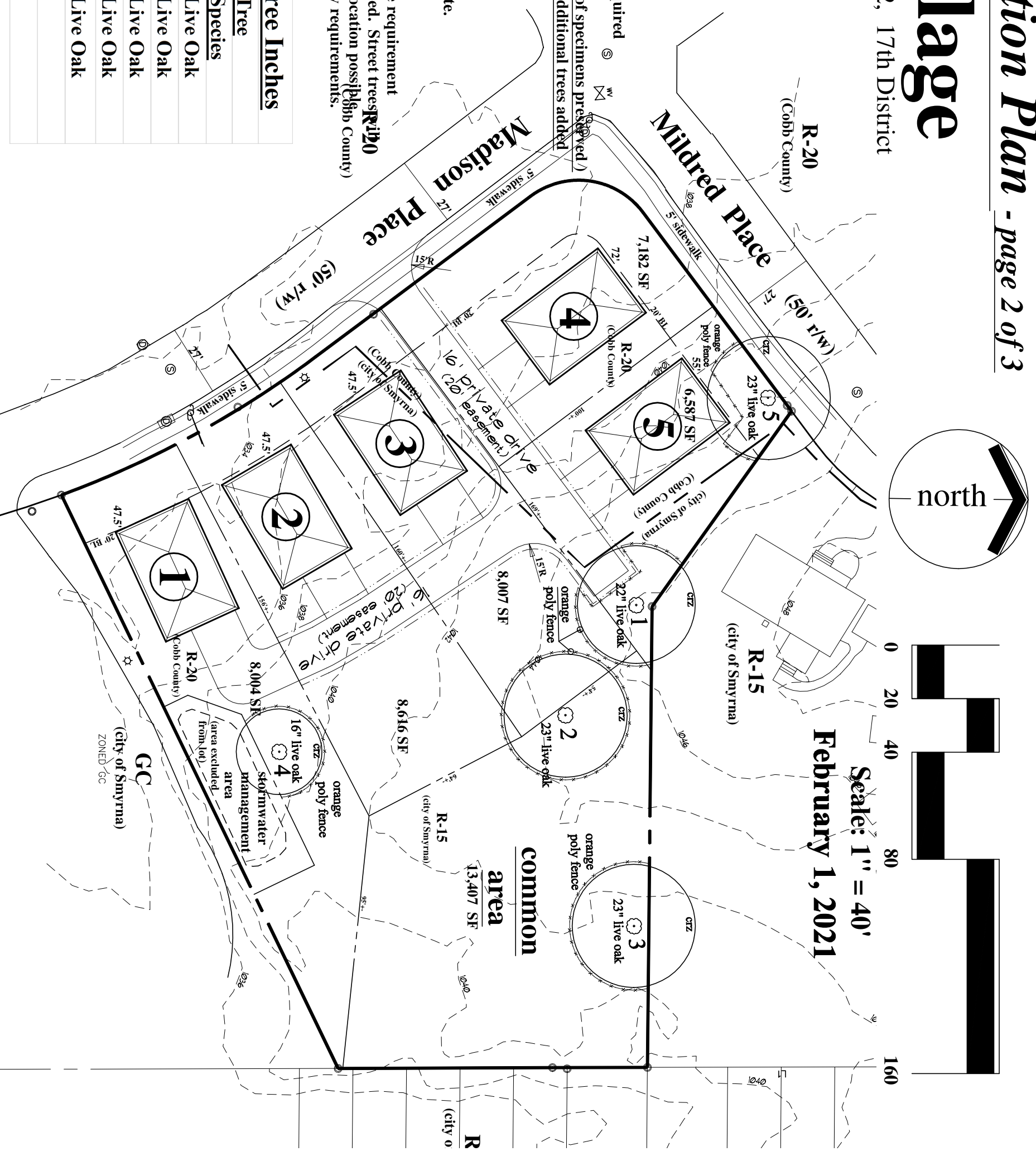
Specimen Tree Recompense Calculation:
No specimen trees are believed to exist on site.

Street Tree Requirement:
8 trees +- will be required per the street tree requirement

A total of 8 x 4" caliper trees will be provided. Street trees **will be placed at every viable and appropriate location possible** (Cobb County). The 8 (32") will be counted to satisfy density requirements.

Preserved Non Specimen Tree Inches

Tree Number	Tree Size DBH (in inches)	Tree Species
1	22	Live Oak
2	23	Live Oak
3	23	Live Oak
4	16	Live Oak
5	23	Live Oak
Total Inches:		107



DGM
LAND PLANNING
CONSULTANTS
9775 Cobb Place
Bldg. Suite 212
KENNESAW
GA 30144
770 514-9006
FAX 514-9491

