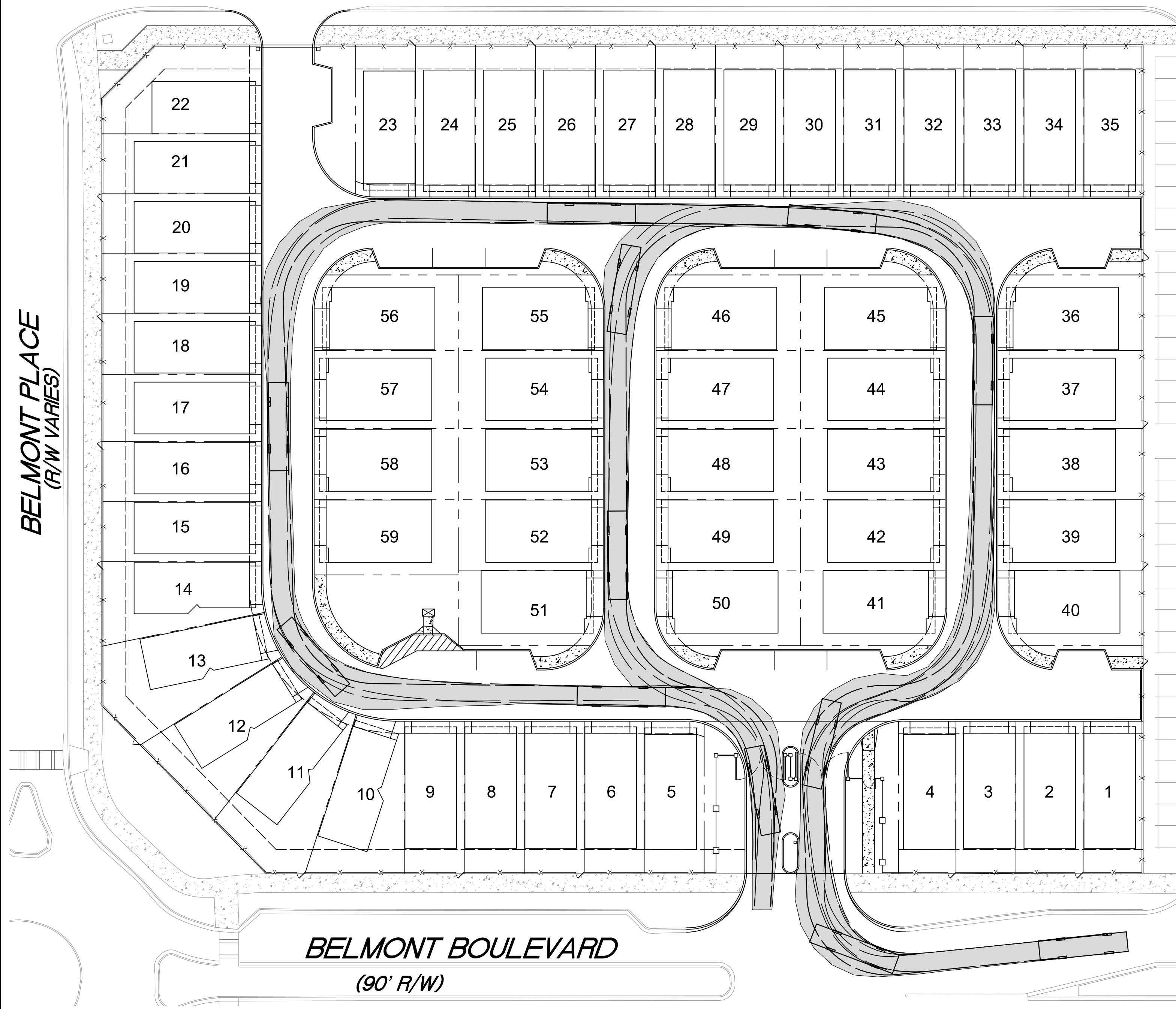
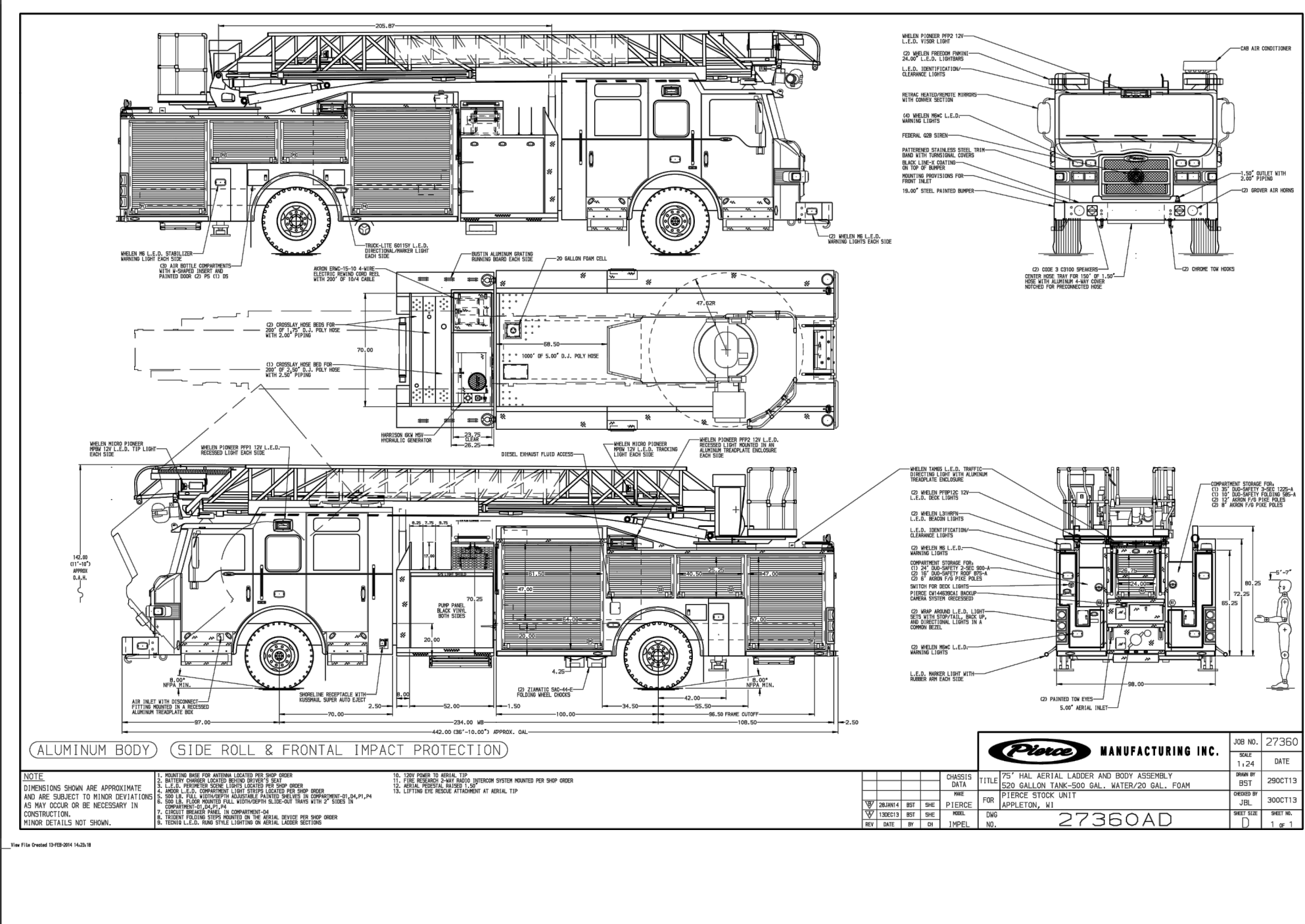
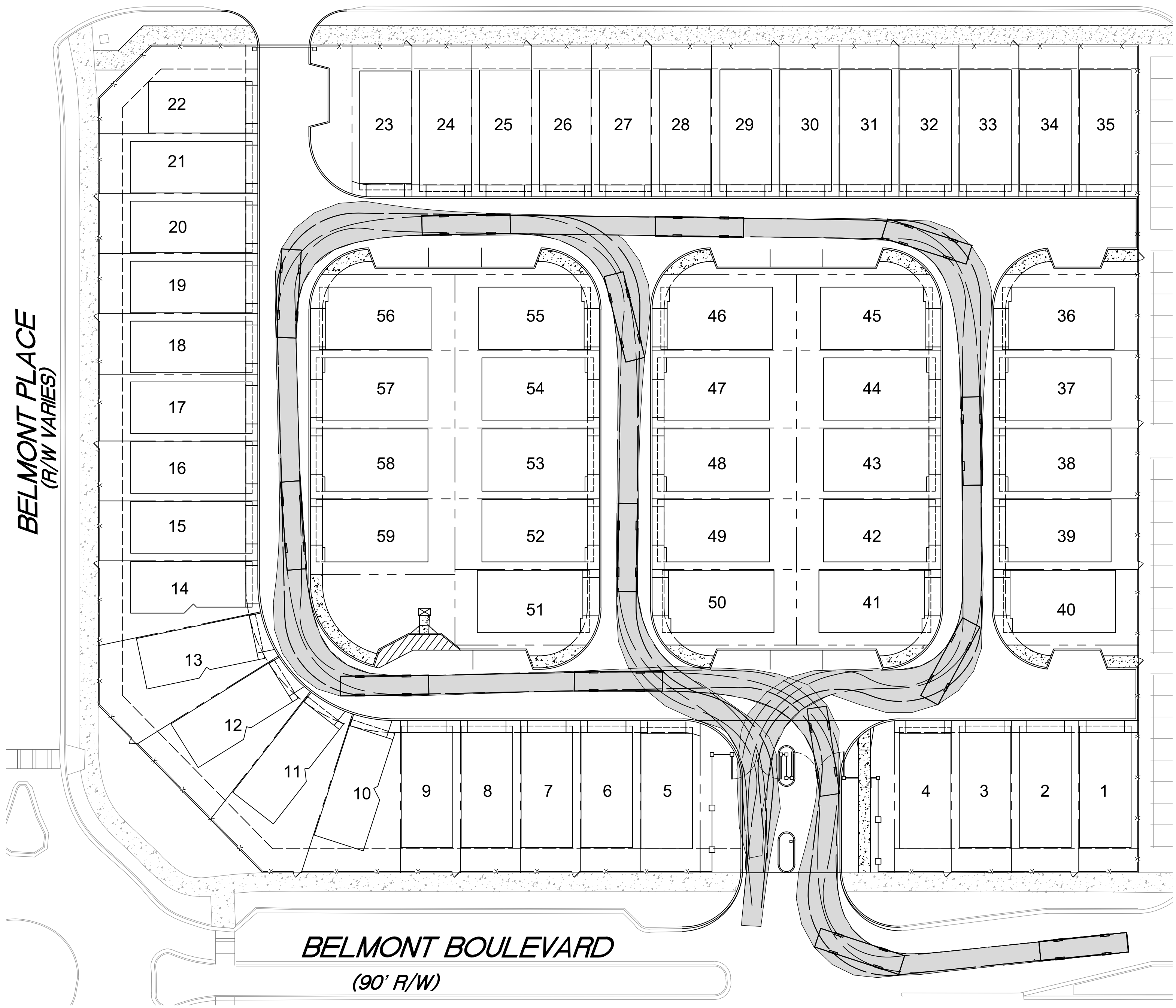


BELMONT PLACE
(R/W VARIES)



BELMONT PLACE
(R/W VARIES)



Pierce Turning Performance Analysis 04/21/2016

Bid Number: 434 **Chassis:** Impel Chassis, Single Axle, 75' HAL, 2010
Department: Smyrna Fire Department **Body:** Aerial, HD Ladder, 75' HAL, Quint, Alum Body

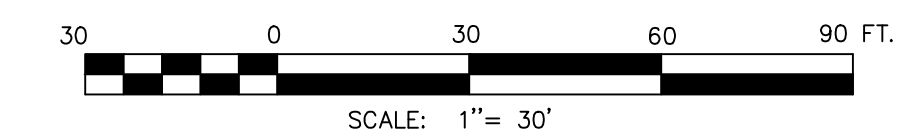
Parameters:
 Inside Cramp Angle: 45°
 Axle Track: 82.92 in.
 Wheel Offset: 4.68 in.
 Tread Width: 17.4 in.
 Chassis Overhang: 78 in.
 Additional Bumper Depth: 19 in.
 Front Overhang: 97 in.
 Wheelbase: 234 in.

Calculated Turning Radii:
 Inside Turn: 18 ft. 5 in.
 Curb to curb: 33 ft. 11 in.
 Wall to wall: 38 ft. 0 in.

Comments:

Category	Option	Description
Axle, Front, Custom	0508849	Axle, Front, Oshkosh TAK-4, Non Drive, 22,800 lb, Imp/Vel
Wheels, Front	0019811	Wheels, Front, Alcoa, 22.50" x 12.25", Aluminum, Hub Pilot
Tires, Front	0594821	Tires, Front, Goodyear, G298 MSA, 42S/6R22.50, 20 ply
Bumpers	0538235	Bumper, 19" Extended, Steel Painted, Imp/Vel
Aerial Devices	0592917	Aerial, 75' HAL, Single Axle, 750# Tip Load

Notes:
 Actual inside cramp angle may be less due to highly specialized options.
 Curb to Curb turning radius calculated for 9.00 inch curb.



DATE : June 29, 2017	REVISIONS
SCALE : 1" = 30 Feet	
DRAWN BY : RD	
CHECKED BY : RMS	

NORTH POINT LAND SURVEYING
 821 WYNTUCK DRIVE
 KENNESAW, GEORGIA 30152
 PHONE: (770) 315-5129
 EMAIL: RS@NPLandSurveying.com
 www.NPLandSurveying.com

FIRE ACCESS—TRUCK 1
 FOR
DAVID WEEKLEY HOMES
 750 Hammond Drive, Building 6, Suite 200
 Atlanta, GA 30328

LOCATED IN L.L. 490
 17TH DISTRICT
 CITY OF SMYRNA
 COBB COUNTY, GA.
 PROJECT NUMBER : 17007

Pg 4/5