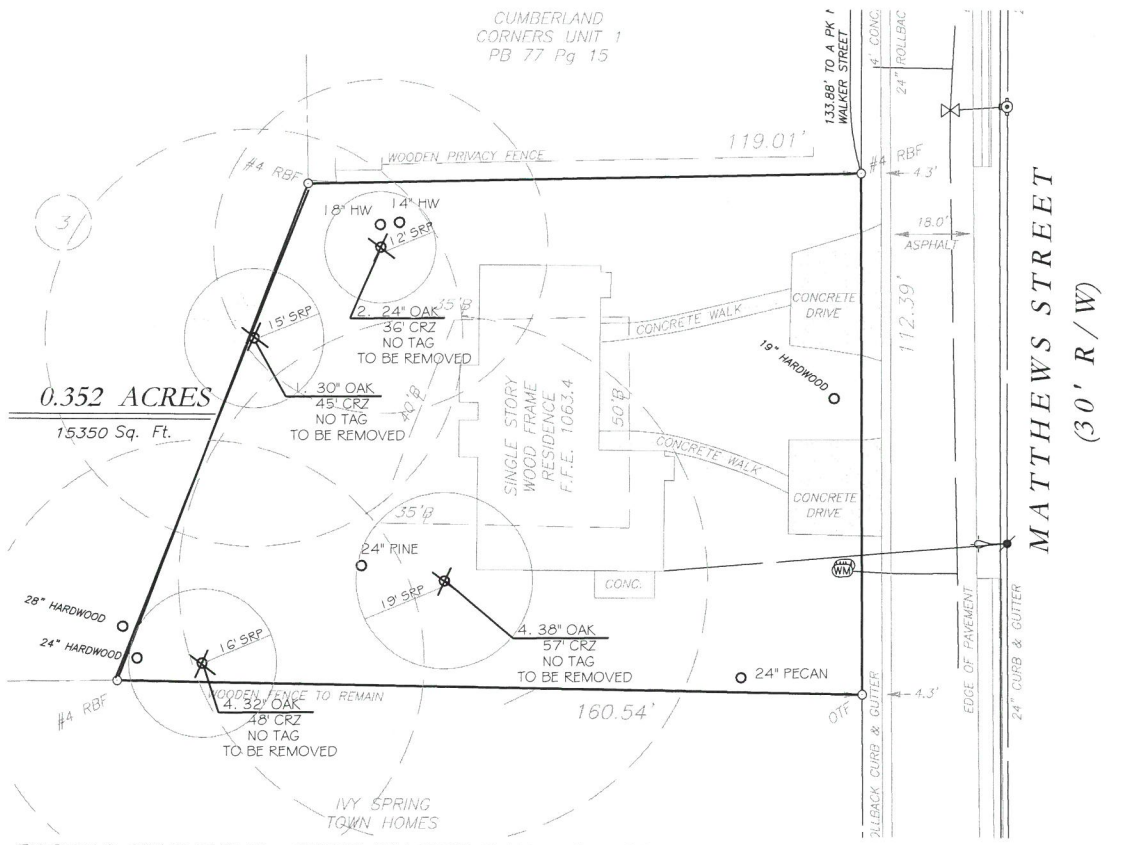
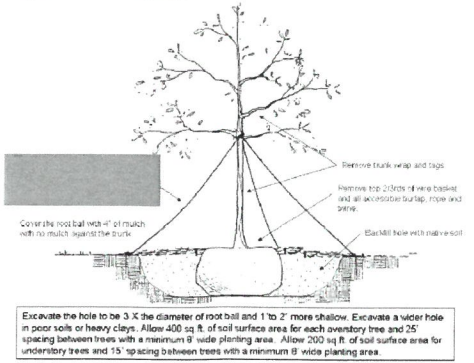


TREE REPLACEMENT PLAN - 1" = 20'

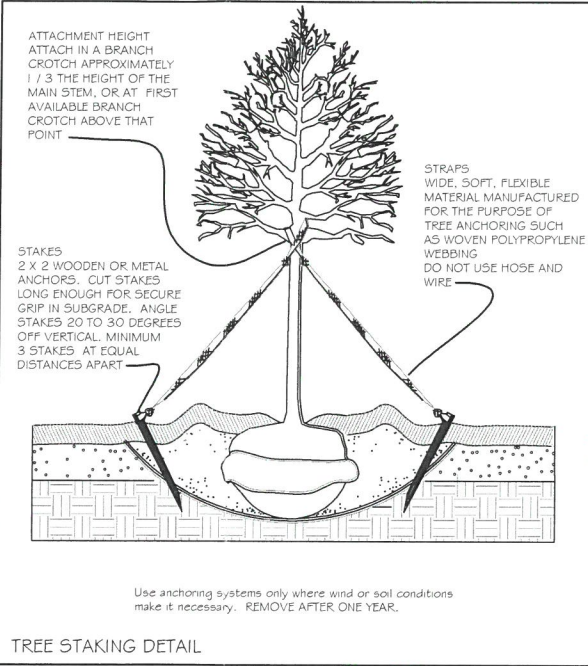
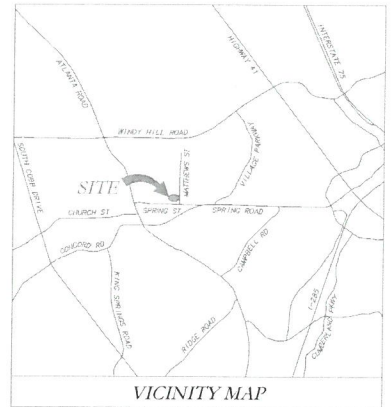
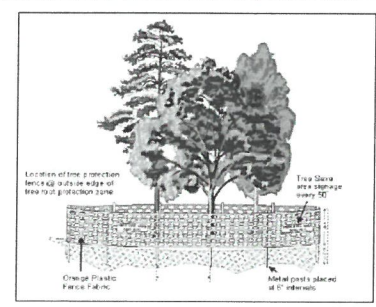


EXISTING CONDITIONS - SPECIMEN TREE PLAN - 1" = 20'

Figure 11: Tree Planting Detail



Tree Protection for Non-Specimen Trees



REPLACEMENT INCHES CALCULATIONS:
 Total acreage = .352 Ac.
 SDF = EDF + RDF
 .352 x 100" per Acre
 = 35.2" Required for site
 Inches to be preserved = 0
 Total inches provided = 37.5
 Therefore: Density Met

RECOMPENSE CALCULATIONS:
 4 Specimen Trees to be Removed
 24" OAK
 30" OAK
 32" OAK
 38" OAK
 124 Specimen Inches to be removed
 100" Maximum Recompense
 28 Recompense Inches Planted (in addition to inches per Acre requirement)
 72 Recompense Inches to be Paid to Tree Fund or 18 (4") Trees to be Planted

PLANT SCHEDULE

TREES	QTY	BOTANICAL / COMMON NAME	CONT	CAL	SIZE	REMARKS	TOTAL INCHES	REC. INCHES	%
ACE SU2	3	Acer rubrum 'Summer Red' / Summer Red Red Maple	B & B	4"cal.	12-14' Ht.	Single Straight Leader, Good Form, Healthy		12	13.5
CER FOR	2	Cercis canadensis 'Forest Pansy' TM / Forest Pansy Redbud	B & B	4"cal.	10-12' Ht.	Straight single leader, Good Form, Healthy		8	9.5
ILE EM2	6	Ilex x 'Emily Bruner' / Emily Bruner Holly	B & B	2.5"cal.	5-6'	Full to Ground, Good Form, Healthy	15		27
MAG CLA	3	Magnolia grandiflora 'Claudia Wannamaker' / Claudia W. Magnolia	B & B	2.5"cal.	6'	Full to Ground, Good Form, Healthy	7.5		13.5
QOU NUT	2	Quercus nuttallii / Nuttall Oak	B & B	4"cal.	12-14' Ht.	Single Straight Leader, Good Form, Healthy		8	9.5
THU EME	6	Thuja occidentalis 'Emerald' / Emerald Arborvitae	B & B	2.5"cal.	6'	Full to Ground, Good Form, Healthy	15		27
22 TREES							37.5	28	100

- CONTACT THE COMMUNITY DEVELOPMENT DEPARTMENT (770) 319-5387 TO ARRANGE A PRECONSTRUCTION CONFERENCE PRIOR TO ANY LAND DISTURBANCE. NO PERMIT SHALL BE ISSUED UNTIL PLANS ARE APPROVED AND AN ON-SITE INSPECTION WITH CITY REPRESENTATIVE OCCURS.
- ALL TREE PROTECTION MEASURES SHALL BE INSTALLED PRIOR TO GRADING OR THE REMOVAL OF IMPERVIOUS SURFACES OR STRUCTURES.
- BUFFERS SHALL BE REPLANTED SUBJECT TO COMMUNITY DEVELOPMENT DEPARTMENT APPROVAL.
- ALL EXISTING TREES, SPECIMEN AND NON-SPECIMEN, COUNTED FOR EDF CREDITS MUST BE FULLY PRESERVED DURING INDIVIDUAL LOT PERMITTING.
- TREES AGREED UPON TO BE SAVED IS THE RESPONSIBILITY OF THE OWNER.
- THE COMMUNITY DEVELOPMENT DIRECTOR MUST INSPECT THE SITE BEFORE INSTALLATION OF EROSION CONTROL MEASURES. LAND DISTURBANCE WITHOUT A SITE INSPECTION AND APPROVAL BY THE COMMUNITY DEVELOPMENT DIRECTOR WILL RESULT IN A 'STOP-WORK ORDER' AND FINES.
- IF TREE SURVEY INACCURACIES ARE FOUND ON-SITE, A STOP WORK ORDER WILL BE ISSUED UNTIL REVISED PLANS ARE APPROVED AND PROCESSED BASED ON ACCURATE INFORMATION.
- THE COMMUNITY DEVELOPMENT DIRECTOR MUST INSPECT AND APPROVE THE SITE BEFORE THE ISSUANCE OF A CERTIFICATE OF OCCUPANCY.
- A 3" LAYER OF ORGANIC MULCH WILL BE REQUIRED FOR THE CRZ OF SPECIMEN TREES. MULCH MUST BE APPLIED PRIOR TO START OF CONSTRUCTION. KEEP MULCH AT LEAST 5-INCH RADIUS AWAY FROM THE TRUNK.
- A 3" LAYER OF ORGANIC MULCH WILL BE REQUIRED FOR ALL REPLACEMENT TREES. MULCH MUST BE APPLIED PRIOR TO START OF CONSTRUCTION. KEEP MULCH AT LEAST 5-INCH RADIUS AWAY FROM THE TRUNK.
- ALL NEWLY PLANTED TREES SHALL HAVE VISIBLE ROOT FLARES AT FINISHED GRADE. NO CIRCLING ROOTS SHALL BE ALLOWED ON PLANTED TREES. THE UPPER 2/3 OF THE WIRE BASKET, ALL BURLAP AND STRAPPING SHALL BE CUT AND REMOVED PRIOR TO BACKFILL.
- TREES LESS THAN THE CALIPER INCH SHOWN WILL NOT BE ACCEPTED. I.E. 4 INCH CALIPER TREES MUST BE 4 INCHES OR LARGER.
- PLANT HEIGHT MEASUREMENT IS TAKEN AT THE TOP OF THE MAIN BODY OF THE PLANT AND NOT AT THE TIP OF THE TOPMOST GROWTH.
- ALL NEWLY PLANTED TREES SHALL BE EQUIVALENT IN QUALITY TO A FLORIDA #1 GRADE OR BETTER. ALL TREES OF LESSER QUALITY SHALL BE REJECTED BY THE COMMUNITY DEVELOPMENT DIRECTOR. NO SUBSTITUTIONS.
- NO TRENCHING ALLOWED IN TREE SAVE AREAS - INCLUDING IRRIGATION
- ALL TREE GUYS AND STAKES SHALL BE REMOVED FROM TREE ONE YEAR AFTER PLANTING OR BEFORE.
- WATERING BAGS OR A DRIP IRRIGATION SYSTEM WILL BE PROVIDED FOR ALL TREES PRIOR TO ISSUANCE OF THE CERTIFICATE OF OCCUPANCY. WATER BAGS WILL BE REFILLED ACCORDING TO SOIL CONDITIONS AND ADJUSTED DURING TIMES OF DROUGHT FOR A MINIMUM OF 2 YEARS AFTER INSTALLATION.
- TREE SAVE FENCE FOR THE ENTIRE SITE MUST BE INSTALLED, INSPECTED AND APPROVED PRIOR TO THE INSTALLATION OF EROSION CONTROL MEASURES. NO LAND DISTURBANCE OR DEMOLITION IS ALLOWED BEFORE TREE SAVE FENCING HAS BEEN INSPECTED AND APPROVED BY COMMUNITY DEVELOPMENT DIRECTOR.

ALL TREES MUST BE PLANTED AT LEAST 10 FEET FROM ANY UTILITY LINE

PROJECT:
 2790
 #5403 MATTHEWS ST.
 REZONING PLAN

LOCATION:
 2790
 5403 MATTHEWS ST.
 LAND LOT 593
 DISTRICT 17
 COBB COUNTY
 SMYRNA, GA

DEVELOPER:
 NEWBRIGHT HOMES, LLC
 24 HOUR CONTACT:
 ATTN: FRANK D'ARIES
 678-368-7113


SURVEYS PLUS, INC.
 3865 SOUTH COBB DR., S.E.
 SMYRNA, GEORGIA 30080
 PHONE: (770) 444-9736
 www.surveysplus.com

CONSULTANT:

TJ SCHELL, LLC
 Landscape Architect • Consulting Arborist
 770.361.2319
 teresa@tjschell.com
 2985 Gordy Pkwy., Ste. 422, Marietta, GA 30066

SEAL:

 TERESA H. ELDRIDGE
 ISA - SO-5442A

SCALE 1" = 20'


REVISIONS	DATE
1.	

DRAWN BY:
 JURISDICTION:
 DATE:

SHEET TITLE:
REZONING TREE PLAN

SHEET NUMBER: T-1

JOB NUMBER:

 Know what's below.
 Call before you dig.
 Dial 811
 Or Call 800-282-7411

