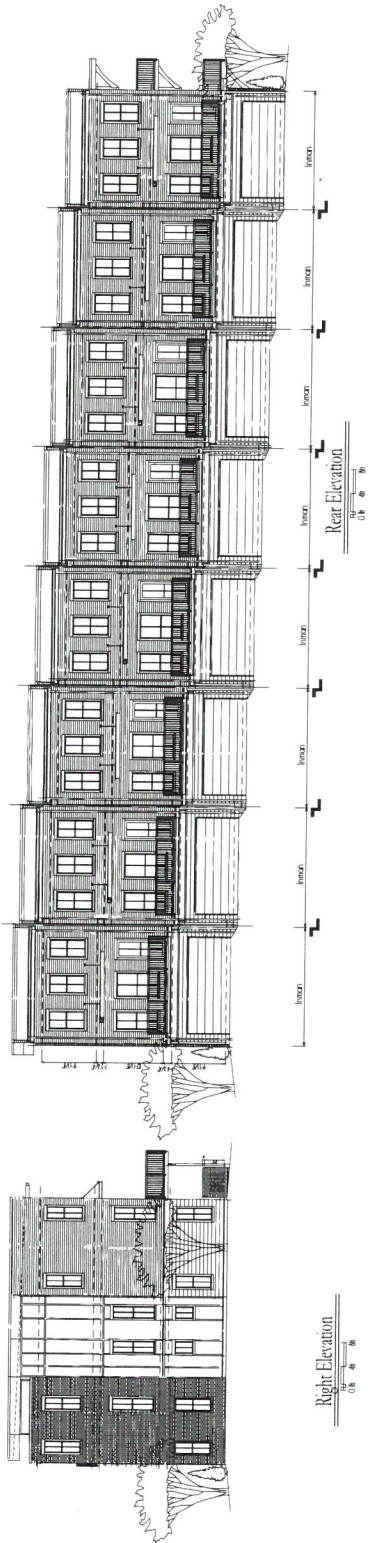


RECEIVED  
MAR - 9 REC'D  
COMMUNITY DEVELOPMENT  
SMYRNA, GA





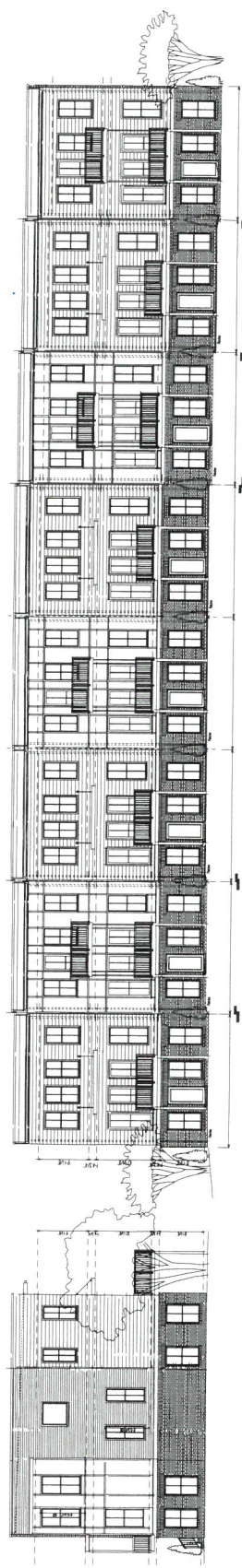


2018 © BDI Architects, Inc  
 February 19, 2018

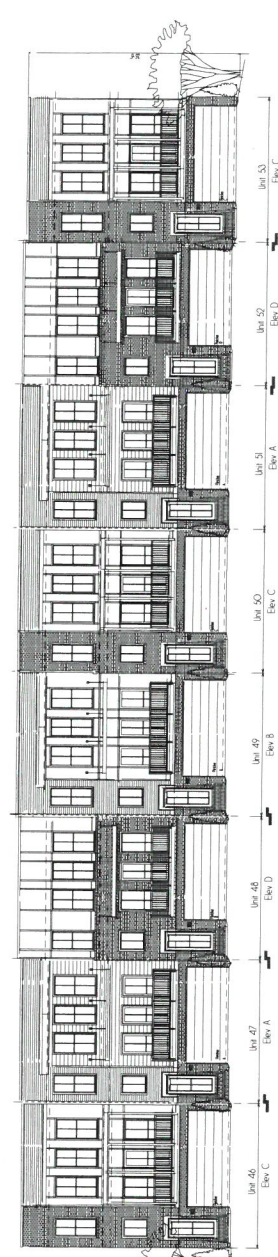


The Providence Group of Georgia

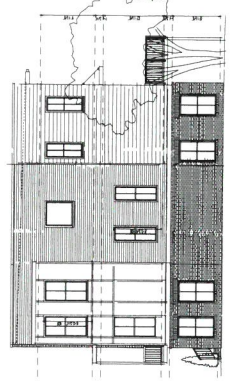
1000 Peachtree Street, N.E.  
 Suite 1000  
 Atlanta, Georgia 30309  
 Tel: 404.525.1000  
 Fax: 404.525.1001  
 www.providencegroup.com



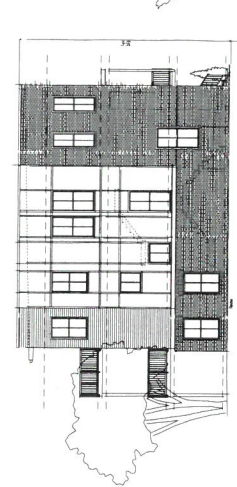
Rear Elevation  
0' 6" 12" 18" 24"



Front Elevation  
0' 6" 12" 18" 24"



Right Elevation  
0' 6" 12" 18" 24"



Left Elevation  
0' 6" 12" 18" 24"

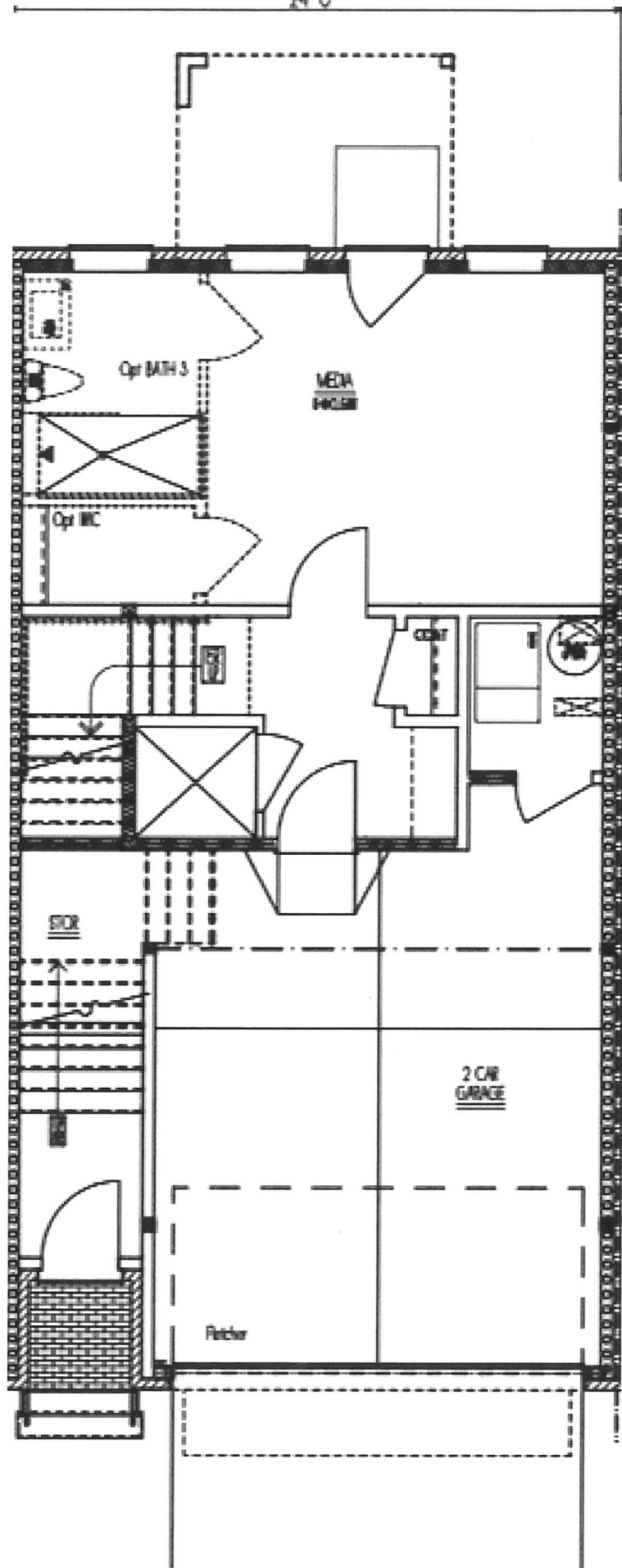
© 2018 BDI Architects, Inc.  
All Rights Reserved.  
This drawing is the property of BDI Architects, Inc.  
It is to be used only for the project and site  
indicated on the drawing. No other use is permitted.



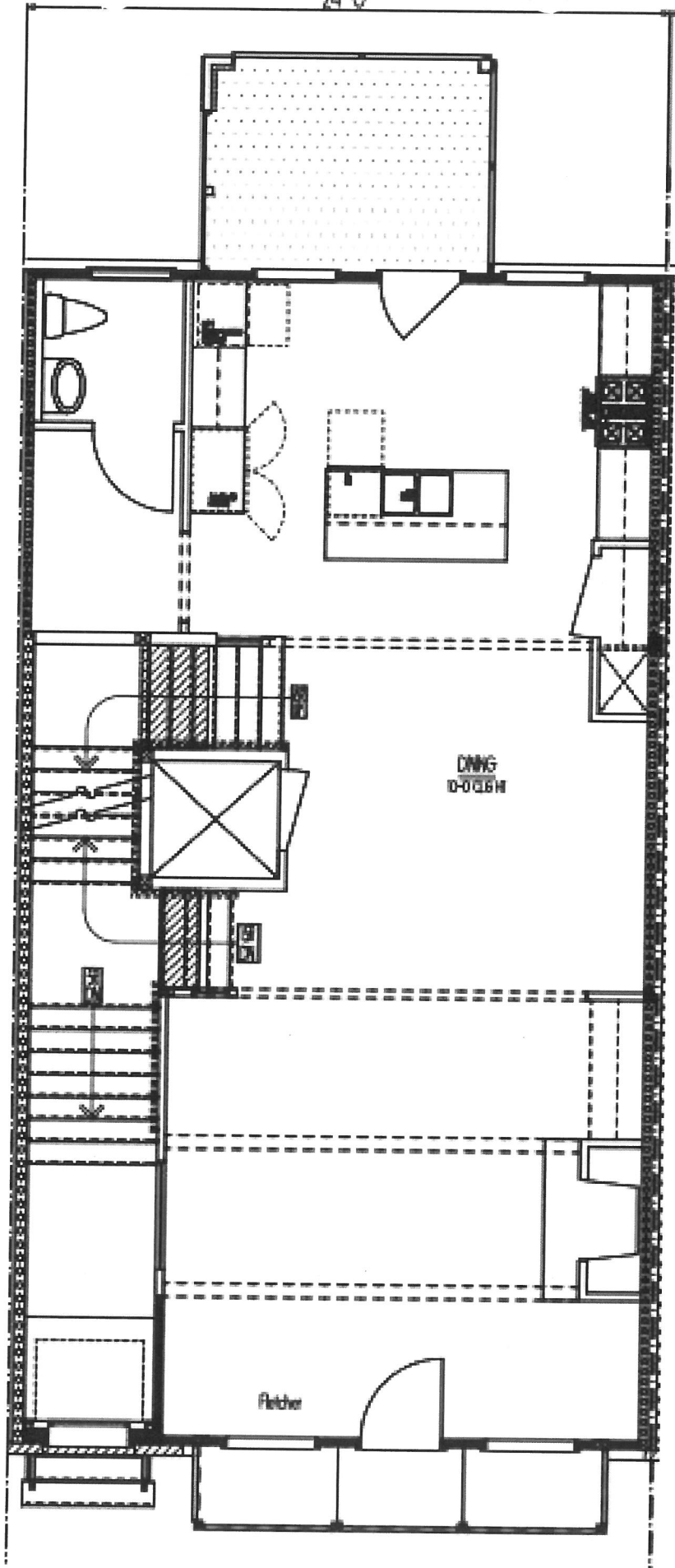
The Providence Group of Georgia

2018 © BDI Architects, Inc  
February 19, 2018

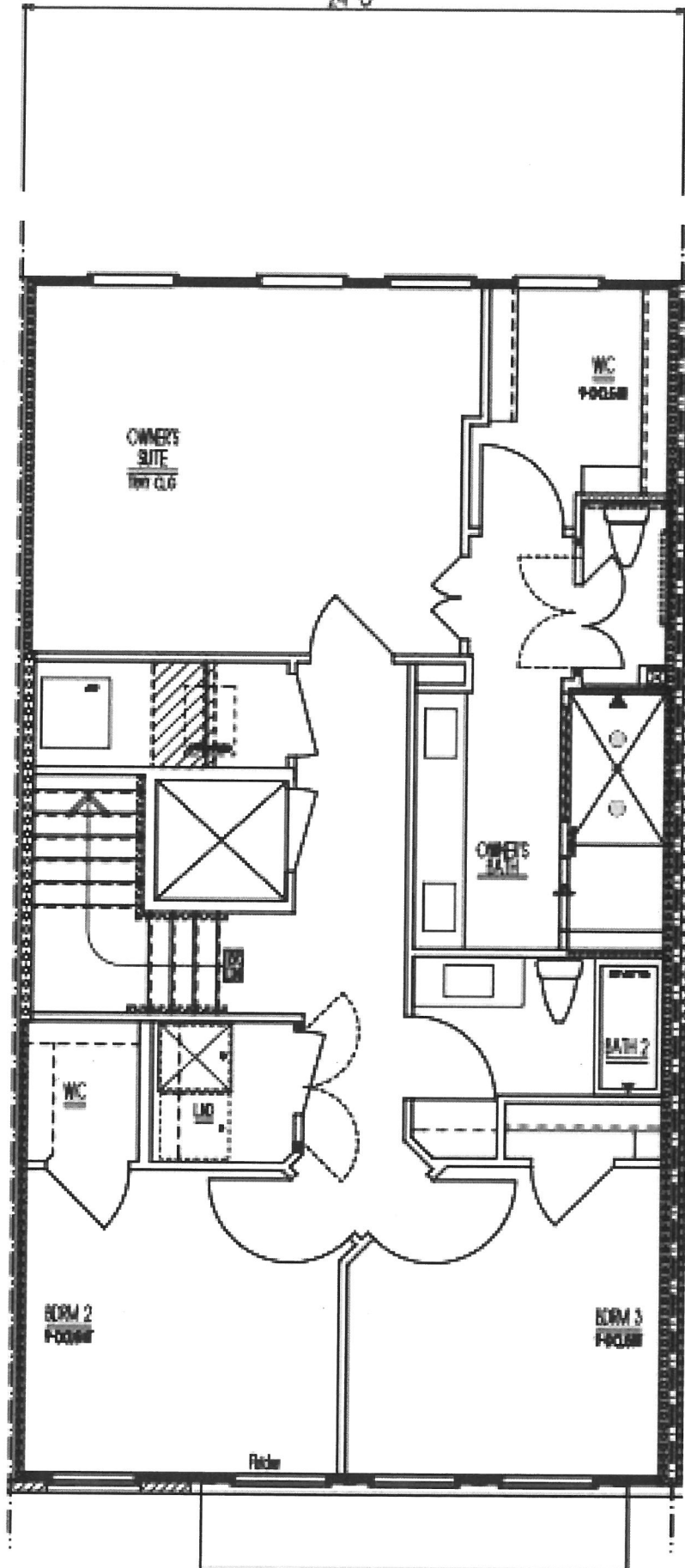
24'-0"

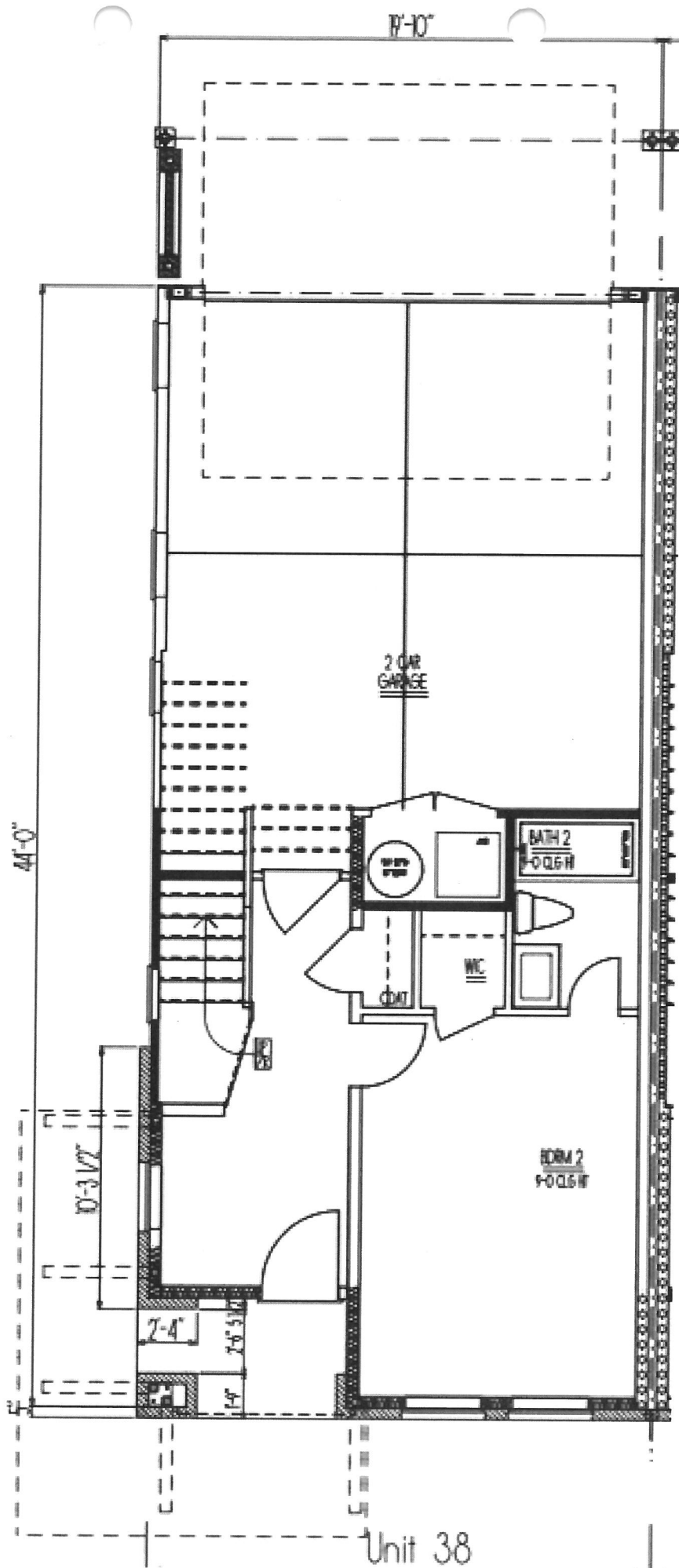


24'-0"

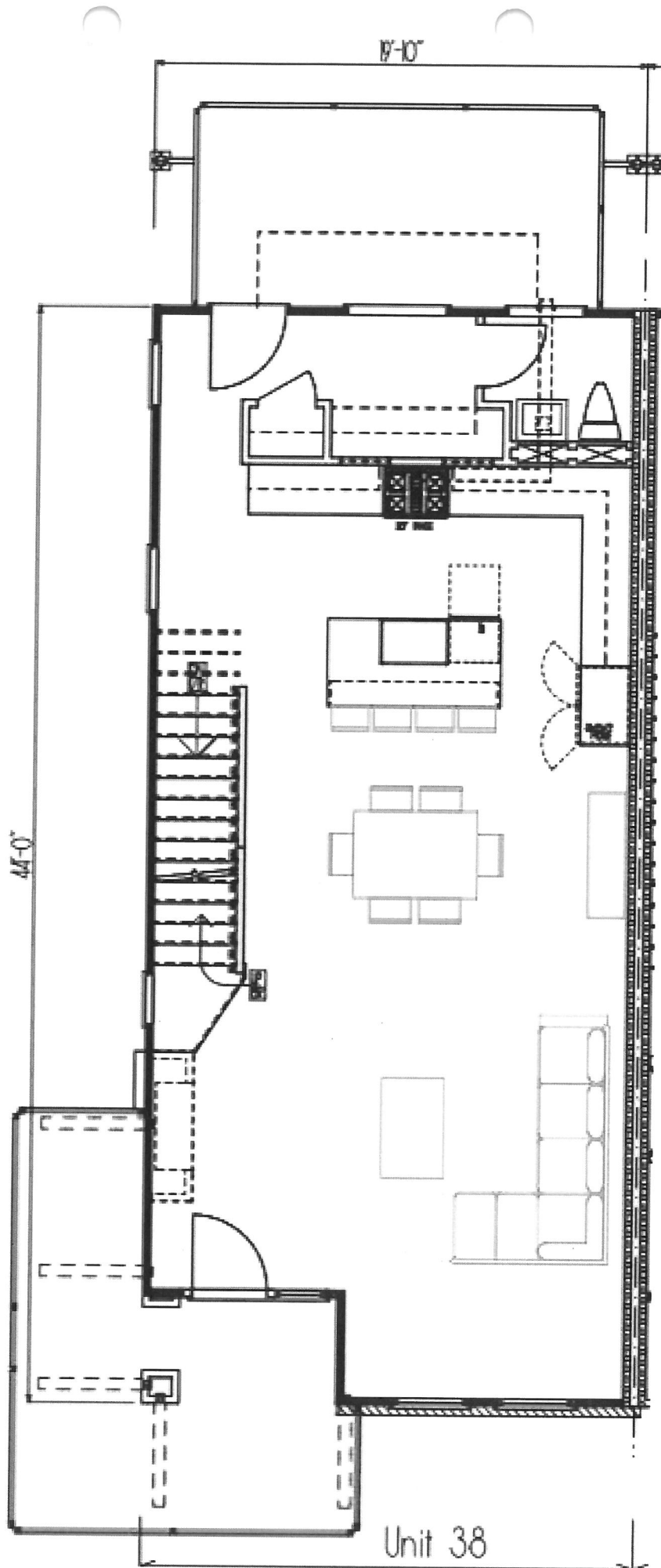


24'-0"

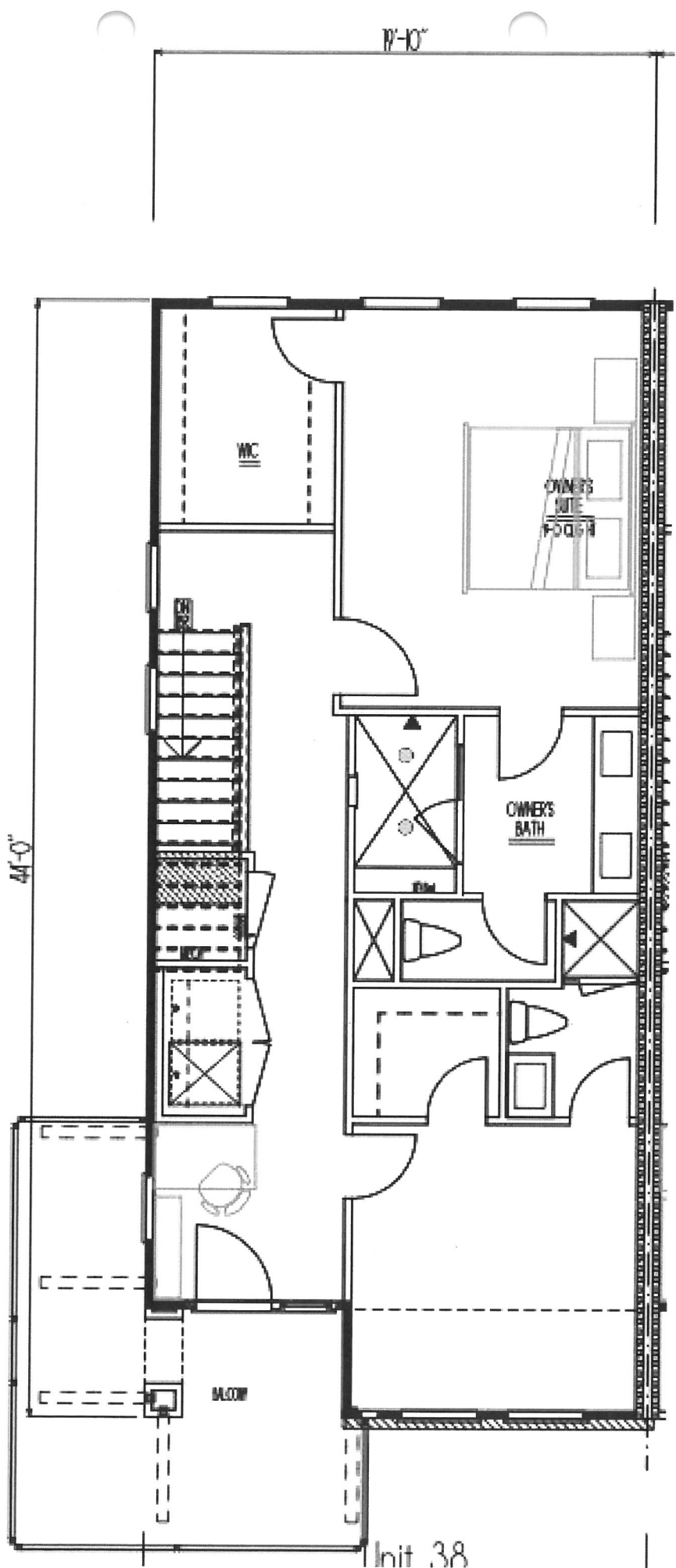












Unit 38