



Front Elevation

## 20' Townhomes



Residential Design by:  
Main Street Designs of Georgia, LLC  
3050 Royal Blvd. South, Suite 135  
Alpharetta, GA 30022  
404.480-3881

3110 Sports Avenue  
City of Smyrna  
January 30, 2019

**LENNAR**

Lennar  
1000 Holcomb Woods Parkway, Building 200  
Roswell GA 30076





Left Elevation



Rear Elevation

## 20' Townhomes



Residential Design by:  
Main Street Designs of Georgia, LLC  
3050 Royal Blvd. South, Suite 135  
Alpharetta, GA 30022  
404.480-3881

3110 Sports Avenue  
City of Smyrna  
January 30, 2019

**LENNAR**<sup>®</sup>

Lennar  
1000 Holcomb Woods Parkway, Building 200  
Roswell GA 30076



Front Elevation

## 24' Townhomes



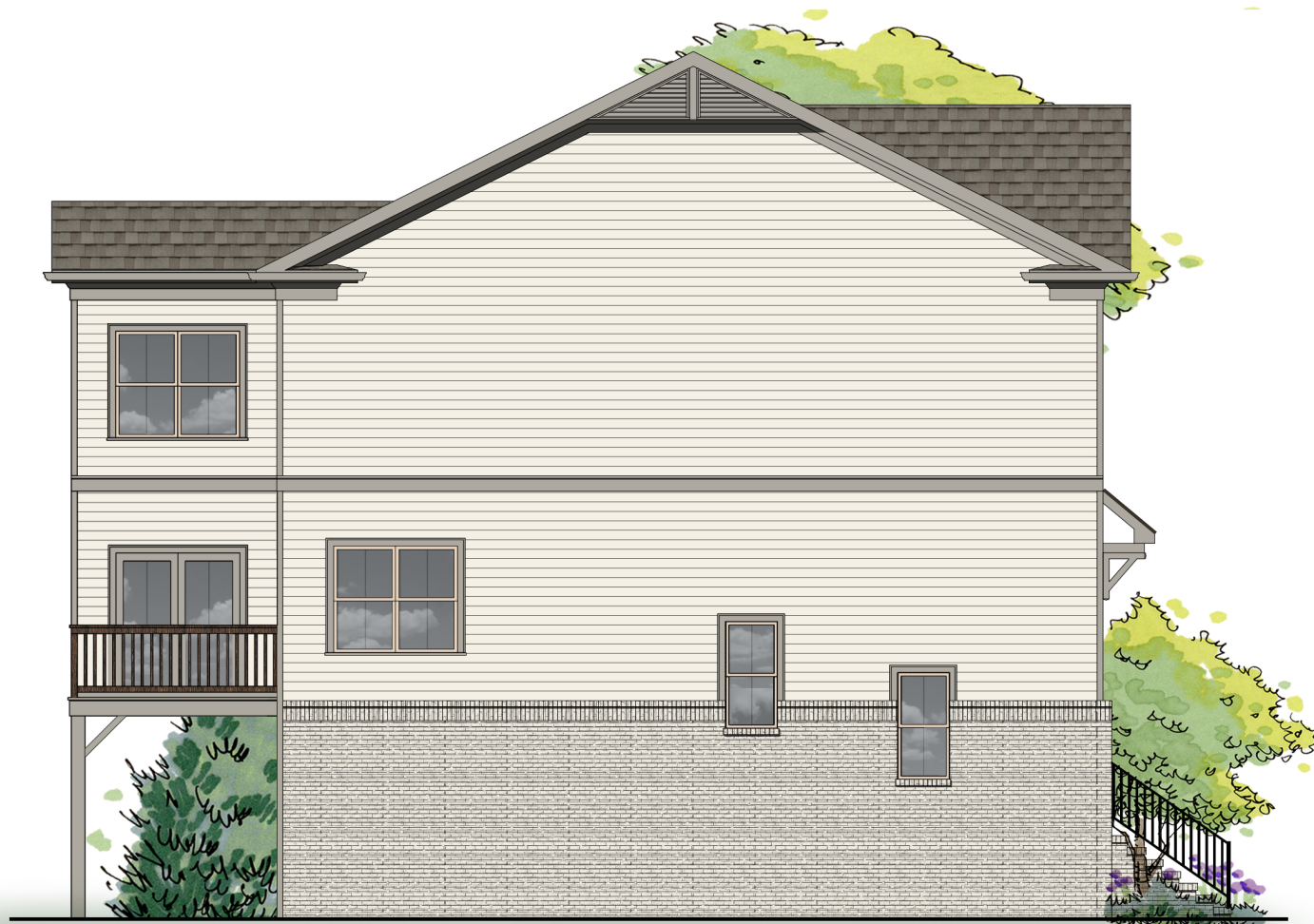
Residential Design by:  
Main Street Designs of Georgia, LLC  
3050 Royal Blvd. South, Suite 135  
Alpharetta, GA 30022  
404.480-3881

3110 Sports Avenue  
City of Smyrna  
January 30, 2019

**LENNAR**<sup>®</sup>

Lennar  
1000 Holcomb Woods Parkway, Building 200  
Roswell GA 30076





Left Elevation



Rear Elevation

## 24' Townhomes



Residential Design by:  
Main Street Designs of Georgia, LLC  
3050 Royal Blvd. South, Suite 135  
Alpharetta, GA 30022  
404.480-3881

3110 Sports Avenue  
City of Smyrna  
January 30, 2019

**LENNAR**<sup>®</sup>

Lennar  
1000 Holcomb Woods Parkway, Building 200  
Roswell GA 30076