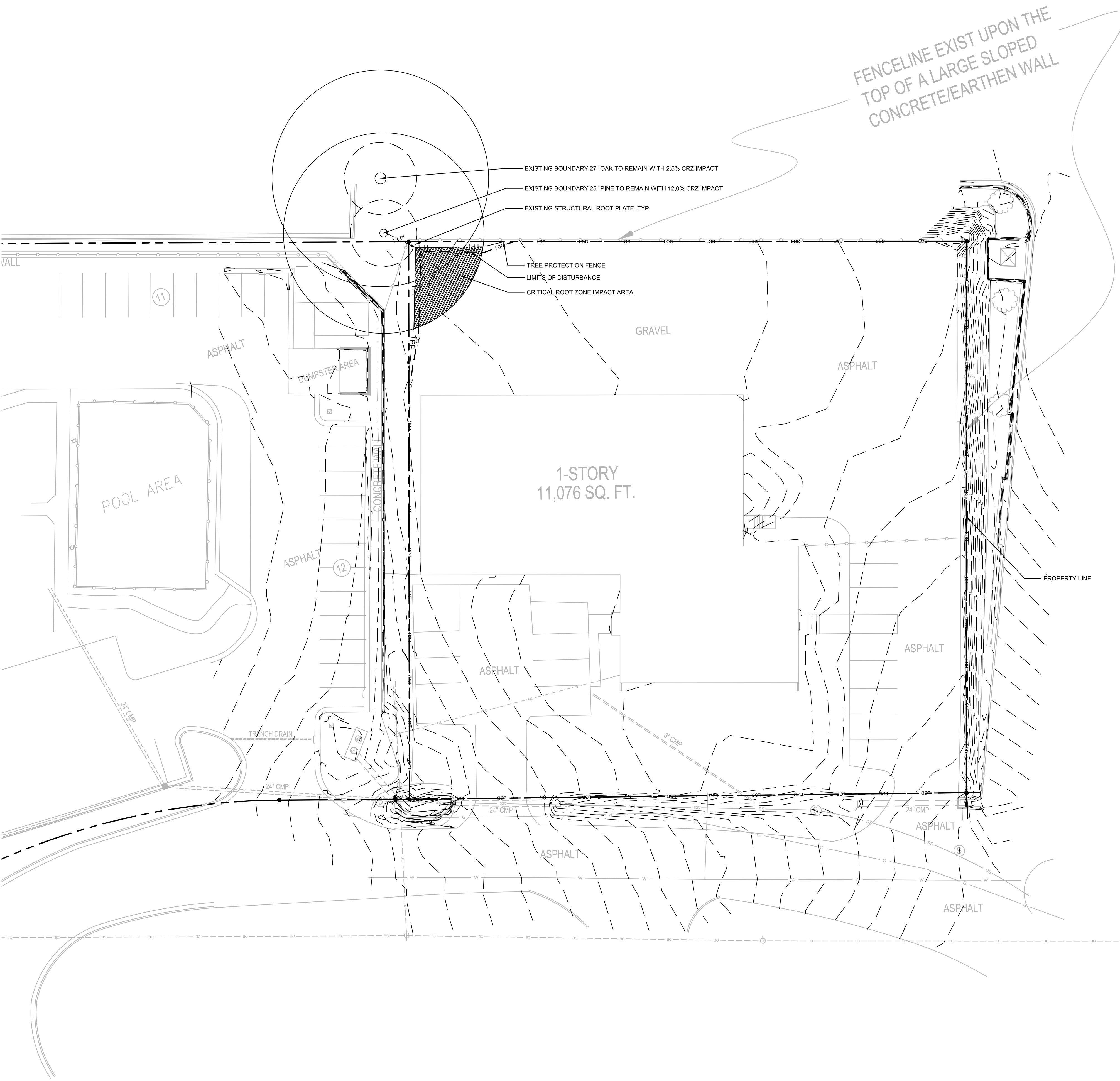
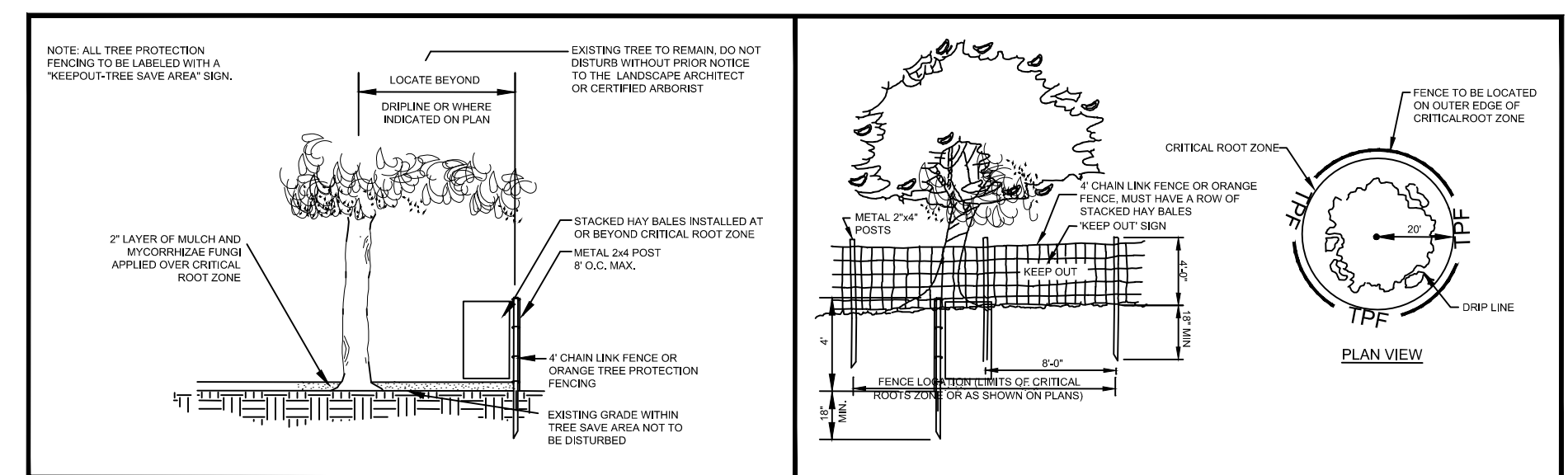


Drawing name: K:\AMT_CIVIL\013077000_2875 Spring Hill Parkway\CAD\PlanSheets\L-00 TREE PROTECTION PLAN.dwg L-00 TREE PROTECTION PLAN Nov 02, 2018 9:43am by: Katie Boucek
 This document, together with the concepts and designs presented herein, is intended only for the specific purpose and client for which it was prepared. Reuse or improper reliance on this document without written authorization and adaptation by Kimley-Horn and Associates, Inc. shall be without liability to Kimley-Horn and Associates, Inc.



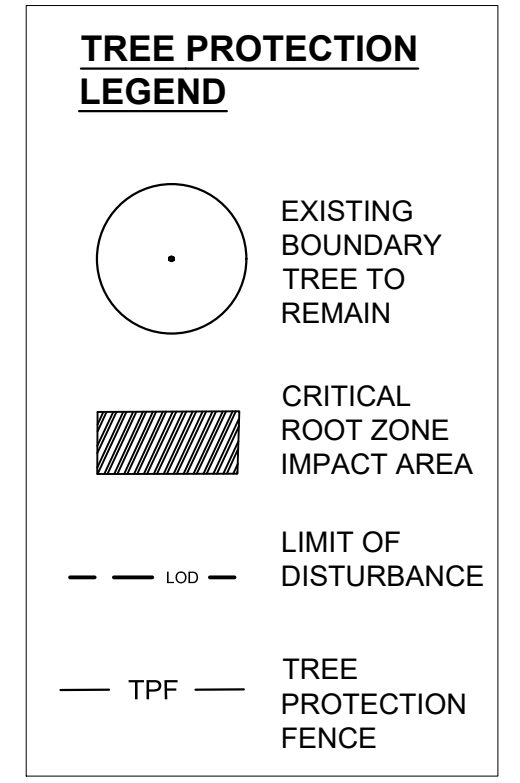
FENCE LINE EXIST UPON THE TOP OF A LARGE SLOPED CONCRETE/EARTHEN WALL



TYPICAL TREE PROTECTION FENCE
NOT TO SCALE

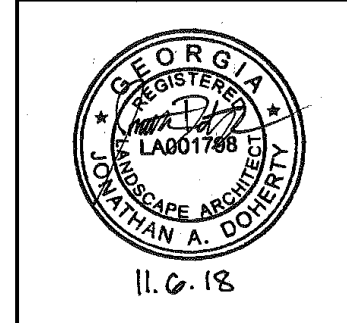
- TREE PROTECTION NOTES**
- CONTACT THE COMMUNITY DEVELOPMENT DEPARTMENT (770-319-5387) TO ARRANGE A PRECONSTRUCTION CONFERENCE PRIOR TO ANY LAND DISTURBANCE. NO PERMIT SHALL BE ISSUED UNTIL PLANS ARE APPROVED AN AN ON-SITE INSPECTION WITH CITY REPRESENTATIVES OCCURS.
 - ALL TREE PROTECTION MEASURES SHALL BE INSTALLED PRIOR TO GRADING OR THE REMOVAL OF IMPERVIOUS SURFACES OR STRUCTURES.
 - BUFFERS SHALL BE REPLANTED SUBJECT TO COMMUNITY DEVELOPMENT DEPARTMENT APPROVAL.

TREE DENSITY CALCULATIONS
 SDF = .99 AC. X 100 = 99 REQUIRED DENSITY UNITS
 EDF = 0
 NOTE - THERE ARE NO EXISTING TREES ON THE PROPERTY
 TOTAL # OF PROPOSED DENSITY UNITS = 104
DENSITY UNIT REQUIREMENT SATISFIED



No.	REVISIONS	DATE	BY
7			
6			
5			
4			
3			
2			
1			

Kimley-Horn
 © 2018 KIMLEY-HORN AND ASSOCIATES, INC.
 817 W. PEACHTREE STREET, NW
 THE BILTMORE SUITE 601
 ATLANTA, GEORGIA 30308
 PHONE (404) 419-8700
 WWW.KIMLEY-HORN.COM



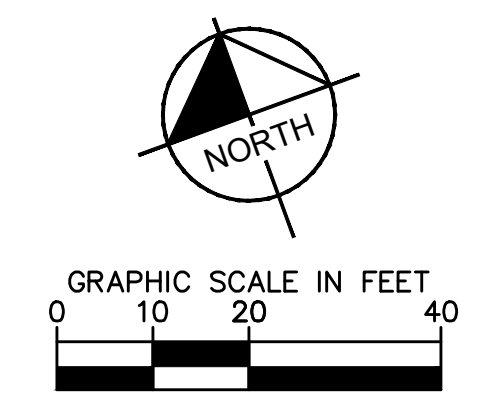
SCALE: AS SHOWN
 DRAWN BY: JRN
 DESIGNED BY: MLL
 CHECKED BY: KRT

CLIENT: **BUCKHEAD AMERICA HOSPITALITY**
 2875 SPRING HILL PARKWAY
 SMYRNA, GA 30080

PROPERTY INFORMATION
 PARCEL IDENTIFICATION NUMBER: 17088100030
 OWNER: BUCKHEAD AMERICA HOSPITALITY
 ADDRESS: 2875 SPRING HILL PKWY SE
 SMYRNA, GA 30080
 PHONE: 678-424-8275
 EMAIL: INFO@BUCKHEADAMERICA.COM

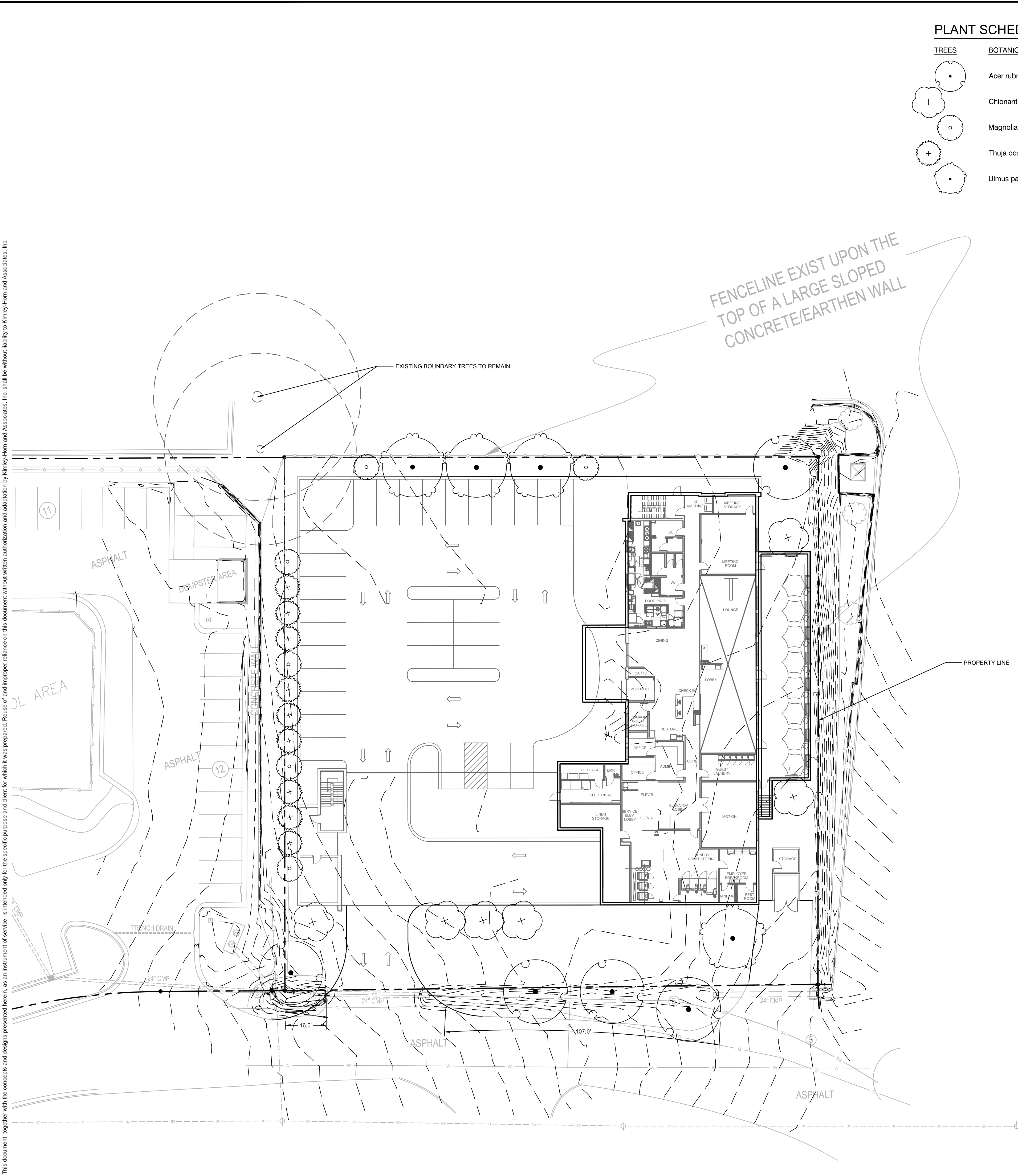
PROJECT: 2875 SPRING HILL PARKWAY, SMYRNA, GA 30080
 TITLE: TREE PROTECTION PLAN

GEORGIA811
 Utilities Protection Center, Inc.
 Know what's below.
 Call before you dig.



DATE: 03/14/18
 PROJECT NO.: 013077000
 SHEET NUMBER: L1-00

Drawing name: K:\M\T_CIVIL\013077000_2875 Spring Hill Parkway\CAD\PlanSheets\L2-00 TREE REPLACEMENT PLAN.dwg L2-00 TREE REPLACEMENT PLAN Nov 02, 2018 9:51 am by: Kaitia Boucek
 This document, together with the concepts and designs presented herein, is intended only for the specific purpose and client for which it was prepared. Reuse of and improper reliance on this document without written authorization and adaptation by Kimley-Horn and Associates, Inc. shall be without liability to Kimley-Horn and Associates, Inc.



PLANT SCHEDULE

TREES	BOTANICAL NAME	COMMON NAME	SIZE	CONTAINER	HEIGHT	QTY	MIN. SPACING	% GENUS	TOTAL INCHES
	Acer rubrum 'Frank Jr.'	Redpointe Maple	4" Cal.	B&B	16'-18' ht.	5	25'	16.0%	20
	Chionanthus virginicus 'Grancey Greybeard'	Grancey Greybeard Fringetree	3" Cal.	B&B	12'-14' ht.	6	15'	20.5%	18
	Magnolia grandiflora 'Teddy Bear'	Teddy Bear Southern Magnolia	3" Cal.	B&B	12'-14' ht.	6	10'	20.5%	18
	Thuja occidentalis 'Emerald Green'	Emerald Green Arborvitae	3" Cal.	B&B	14'-16' ht.	9	10'	30.0%	27
	Ulmus parvifolia 'Everclear'	Everclear Lacebark Elm	4" Cal.	B&B	16'-18' ht.	4	25'	13.0%	16
						30		100%	99

LANDSCAPE NOTES

- REFER TO CIVIL SHEETS FOR GRADING AND DRAINAGE WITHIN LANDSCAPE AND HARDSCAPE AREAS.
- ALL PLANT MATERIAL MUST MEET THE MINIMUM STANDARDS AS PROVIDED IN THE AMERICAN STANDARD FOR NURSERY STOCK (ANSI Z60.1). TREES MUST BE FREE OF INJURY, PESTS, DISEASE, NUTRITIONAL DISORDERS OR ROOT DEFECTS AND MUST BE IN GOOD VIGOR TO ASSURE A REASONABLE EXPECTATION OF SURVIVAL. STANDARDS FOR TRANSPLANTING SHALL BE IN KEEPING WITH THOSE ESTABLISHED IN THE INTERNATIONAL SOCIETY OF ARBORICULTURE PUBLICATION TREE AND SHRUB PLANTING MANUAL OR A SIMILAR PUBLICATION.
- CONTRACTOR IS TO VERIFY LOCATION OF ALL TREES WITH PLANS PREPARED BY LANDSCAPE ARCHITECT PRIOR TO INSTALLATION.
- ALL PLANTS SHALL BE HEALTHY, VIGOROUS MATERIAL AND FREE OF PESTS AND DISEASE.
- ALL PLANTS MUST BE CONTAINER GROWN OR BALLED AND BURLAPPED AS INDICATED IN THE PLANT LIST.
- ALL PLANT MATERIAL QUANTITIES SHOWN ARE APPROXIMATE. CONTRACTOR SHALL BE RESPONSIBLE FOR COMPLETE COVERAGE OF ALL PLANTING BEDS AT SPACING SHOWN.
- ALL PLANTS ARE SUBJECT TO APPROVAL OF THE OWNER BEFORE, DURING AND AFTER INSTALLATION.
- ALL PLANTING BEDS ARE TO BE COMPLETELY COVERED WITH SHREDDED HARDWOOD MULCH AT A MINIMUM OF 3 INCHES. THE MULCH SHALL BE FREE FROM MOLD, STICKS, CONES, WEEDS AND OTHER DEBRIS. COMPACTION OF THE MULCH SHALL OCCUR NATURALLY OVER A TWO WEEK PERIOD DURING WHICH AT LEAST ONE SIGNIFICANT RAINFALL HAS OCCURRED. ADDITIONAL MULCH SHALL BE PLACED IN ORDER TO MAINTAIN THE MINIMUM DEPTH UNTIL DATE OF FINAL ACCEPTANCE.
- THE CONTRACTOR SHALL CONTACT THE APPROPRIATE UTILITY COMPANIES AND 811 TO HAVE THE LOCATIONS OF THEIR UNDERGROUND UTILITIES MARKED PRIOR TO BEGINNING WORK. CAUTION SHALL BE EXERCISED TO AVOID INTERRUPTION OF SERVICES. THE CONTRACTOR IS RESPONSIBLE FOR REPAIR OF ALL EXISTING UTILITIES DAMAGED DURING CONSTRUCTION.
- THE CONTRACTOR IS RESPONSIBLE FOR FULLY MAINTAINING ALL PLANTING UNTIL THE WORK IS ACCEPTED BY THE OWNER. MAINTENANCE INCLUDES BUT IS NOT LIMITED TO: WATERING, SPRAYING, MULCHING, FERTILIZING.
- THE CONTRACTOR SHALL GUARANTEE ALL PLANT MATERIAL FOR A PERIOD OF ONE YEAR BEGINNING AT THE DATE OF FINAL ACCEPTANCE. THE CONTRACTOR SHALL PROMPTLY MAKE ALL REPLACEMENTS BEFORE THE END OF THE GUARANTEE PERIOD (AS PER DIRECTION FROM THE OWNER).
- ANY PLANT MATERIAL THAT DIES, TURNS BROWN, OR DEFOOLIATES PRIOR TO FINAL ACCEPTANCE SHALL BE REMOVED AND REPLACED WITH MATERIAL OF THE SAME SPECIES, QUANTITY AND SIZE AT NO ADDITIONAL COST TO THE OWNER.
- THE CONTRACTOR SHALL SUPPLY ALL PLANTING MIX: 50% ORGANIC SOIL ADDITIVES AND 50% TOPSOIL.
- THE AREA TO BE PLANTED SHALL BE SPRAYED WITH HERBICIDE ONE WEEK PRIOR TO TILLING AND PLANTING. ALL EXISTING TURF AND VEGETATION SHALL BE STRIPPED AND REMOVED PRIOR TO THE INSTALLATION OF ANY TURF OR PLANT MATERIAL.
- CONTRACTOR TO VERIFY THAT PLANTING LOCATIONS DO NOT CONFLICT WITH EXISTING UTILITIES, STRUCTURES, EASEMENTS OR DRAINAGE PATTERNS.
- CONTRACTOR TO REFER TO THE EROSION CONTROL PLANS FOR ALL TEMPORARY AND PERMANENT SEEDING AREAS.
- THE QUANTITIES SHOWN IN THE PLANT SCHEDULE ARE SOLELY FOR THE INFORMATION OF THE CONTRACTOR. THE CONTRACTOR SHALL VERIFY THE QUANTITIES SHOWN IN THE PLANT SCHEDULE WITH THE QUANTITIES SHOWN ON THE PLANTING PLAN. ALL DIFFERENCES IN THE QUANTITIES SHALL BE BROUGHT TO THE ATTENTION OF THE LANDSCAPE ARCHITECT FOR CLARIFICATION. CONTRACTOR IS RESPONSIBLE TO INSTALL THE PLANT MATERIAL QUANTITIES THAT ARE SHOWN IN THE LANDSCAPE PLANS.
- THE LANDSCAPE CONTRACTOR IS RESPONSIBLE FOR MAINTAINING THE SITE (INCLUDING, BUT NOT LIMITED TO WEEDING, WATERING, SPRAYING, MULCHING, FERTILIZING, ETC..) OF PLANTING AREAS AND LAWN AREAS UNTIL THE WORK IS ACCEPTED IN TOTAL BY THE LANDSCAPE ARCHITECT AND THE OWNER. THE CONTRACTOR IS RESPONSIBLE FOR THE FULL WARRANTY OF ALL THE PLANT MATERIAL UNTIL FINAL ACCEPTANCE.
- ALL SLOPES THAT ALL GREATER THAN 3:1 SHALL BE STABILIZED WITH EROSION CONTROL FABRIC PRIOR TO PLANTING. EROSION CONTROL FABRIC SHALL BE OF THE TYPE THAT DECOMPOSES AFTER 18 MONTHS TO 2 YEARS.
- THE OWNER'S REPRESENTATIVE RESERVES THE RIGHT TO REJECT, AT ANY TIME UNTIL THE END OF THE GUARANTEE PERIOD, ANY AND/OR ALL PLANT MATERIAL THAT DOES NOT MEET THE SPECIFICATIONS AS SET FORTH HERIN AND IN THE PLANT SCHEDULE.

TREE DENSITY CALCULATIONS

SDF = .99 AC. X 100 = 99 REQUIRED DENSITY UNITS
 EDF = 0
 NOTE - THERE ARE NO EXISTING TREES ON THE PROPERTY
 TOTAL # OF PROPOSED DENSITY UNITS = 99
DENSITY UNIT REQUIREMENT SATISFIED

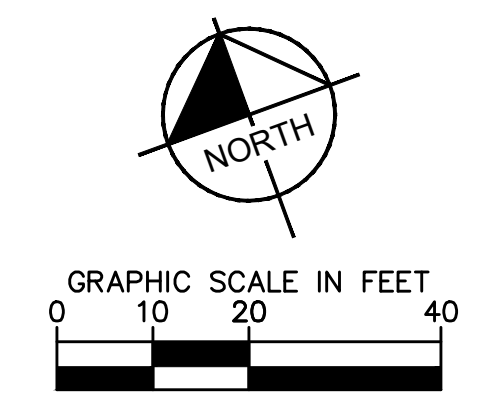
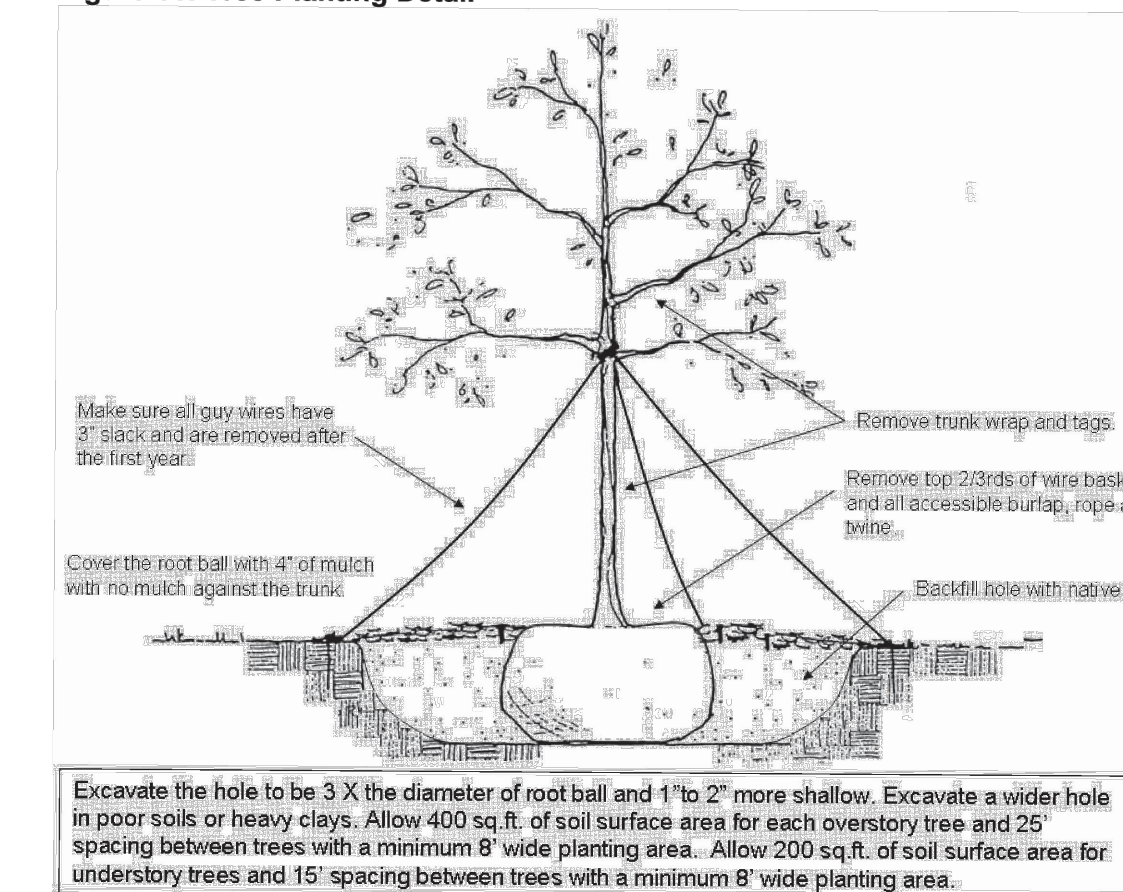
STREET FRONTAGE CALCULATIONS

123 LF / 40 = 3 STREET TREES REQUIRED
 STREET TREES PROVIDED = 3
STREET TREE REQUIREMENT SATISFIED

TREE REPLACEMENT NOTES

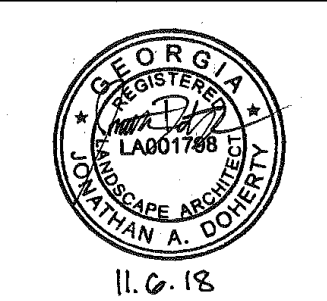
- TREES SELECTED FOR REPLANTING MUST BE FREE FROM INJURY, PESTS, DISEASE, NUTRITIONAL DISORDERS OR ROOT DEFECTS, AND MUST BE IN GOOD VIGOR, MUST HAVE RADIALY SYMMETRICAL BRANCHING WITH A DOMINANT LEADER, AND MUST HAVE NO LESS THAN FOUR FEET (4') BETWEEN PLANTED GRADE AND LOWEST BRANCH AND LOWEST BRANCH ON THE TRUNK FOR A TWO INCH (2") CALIPER TREE IN ORDER TO ASSURE A REASONABLE EXPECTATION OF SURVIVABILITY. STANDARDS FOR TRANSPLANTING SHALL BE IN KEEPING WITH THOSE ESTABLISHED IN THE INTERNATIONAL SOCIETY OF ARBORICULTURE PUBLICATION TREE AND SHRUB PLANTING MANUAL OR SIMILAR PUBLICATION.

Figure 11: Tree Planting Detail



No.	DATE	REVISIONS	BY
7			
6			
5			
4			
3			
2			
1			

Kimley-Horn
 © 2018 KIMLEY-HORN AND ASSOCIATES, INC.
 817 W. PEACHTREE STREET, NW
 SUITE 601
 ATLANTA, GEORGIA 30308
 PHONE (404) 419-8700
 WWW.KIMLEY-HORN.COM



SCALE: AS SHOWN
 DRAWN BY: JRN
 DESIGNED BY: MML
 CHECKED BY: KRT

CLIENT: BUCKHEAD AMERICA
 HOSPITALITY
 2875 SPRING HILL PARKWAY
 SMYRNA, GA 30080

PROJECT: 2875 SPRING HILL PARKWAY,
 SMYRNA, GA 30080
 TITLE: TREE REPLACEMENT PLAN

DATE: 03/14/18
 PROJECT NO.: 013077000
 SHEET NUMBER: L2-00