

SURVEYOR'S CERTIFICATION

I HEREBY CERTIFY THAT, IN MY OPINION, THIS PLAT IS A CORRECT REPRESENTATION OF THE LAND PLATED AND HAS BEEN PREPARED IN CONFORMITY WITH THE TECHNICAL STANDARDS FOR PROPERTY SURVEYS IN THE GEORGIA SURVEYING ACT AND THE RULES OF THE GEORGIA BOARD OF REGISTRATION FOR PROFESSIONAL ENGINEERS AND LAND SURVEYORS AND AS SET FORTH IN THE GEORGIA PLAT ACT O.C.G.A. 15-6-67.

03/25/2016

CERTIFICATE OF AUTHORIZATION NO. 157000078
 DONALDY HUTCHINS
 GEORGIA RLS. NO. 2011

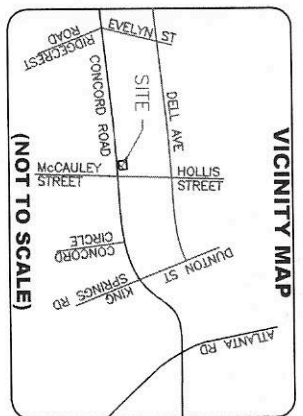


**ORIGINAL APPEARANCE
 OF DOCUMENT**

SURVEYOR'S NOTES

1. THIS PROPERTY MAY BE SUBJECT TO EASEMENTS, CLAIMS, PRESCRIPTIONS, SUBSURFACE CONDITIONS, OR OTHER MATTERS OF RECORD WHICH ARE NOT VISIBLE, NOT RECORDED, OR NOT DISCLOSED.
2. THE UTILITIES SHOWN ARE FOR THE OWNER'S CONVENIENCE ONLY - THESE MAY BE OTHER UNDERGROUND UTILITIES NOT SHOWN HEREON. THE SURVEYOR ASSUMES NO RESPONSIBILITY FOR THE UNDERGROUND UTILITIES SHOWN OR NOT SHOWN. ALL DAMAGES MADE TO EXISTING UTILITIES BY THE OWNER OR THE OWNER'S AGENT, SHALL BE THE SOLE RESPONSIBILITY OF THE OWNER, OR THE OWNER'S AGENT, I.E. UNDERGROUND TANKS, GAS LINES, WATER LINES, SEWER LINES, ETC.
3. THIS PLAT IS FOR THE EXCLUSIVE USE OF THE PARTIES STATED ON THE FACE OF THE SURVEY. ANY USE BY THIRD PARTIES IS AT THEIR OWN RISK.
4. ACCORDING TO THE F.E.M.A. FLOOD INSURANCE RATE MAP, COMMUNITY PANEL NUMBER 13067C019H, EFFECTIVE DATE MARCH 04, 2013, FOR COBB COUNTY, GEORGIA, THIS PROPERTY DOES NOT LIE WITHIN A 100 YEAR FLOOD PLAIN AS DETERMINED BY F.E.M.A.
5. THE INITIAL CONTROL POINTS FOR THIS SURVEY WERE LOCATED UTILIZING GPS. THE EQUIPMENT USED WAS A TRIMBLE R6 MODEL 3 DUAL FREQUENCY RECEIVER WITH A TRIMBLE TSC3 DATA COLLECTOR RUNNING TRIMBLE ACCESS SOFTWARE. NETWORK RTK CORRECTIONS WERE RECEIVED THROUGH THE TRIMBLE TRIMNET SERVICE. THE SURVEY WAS CONDUCTED USING THE TRIMBLE TRIMNET SERVICE. THE SURVEYOR ASSUMES NO RESPONSIBILITY FOR THE DATA COLLECTED BY THE TRIMNET SERVICE. THE SURVEYOR ASSUMES NO RESPONSIBILITY FOR THE DATA COLLECTED BY THE TRIMNET SERVICE.
6. FIELD WORK FOR THIS PROJECT WAS COMPLETED ON AUGUST 20TH, 2015. THIS PLAT IS PREPARED FROM A FIELD SURVEY USING A TRIMBLE R6 TOTAL STATION, AND TRIMBLE TSC3 DATA COLLECTOR. LINEAR INTERPOLATION OF TRAVERSE 1/26.105; ANGULAR ERROR 1/2 PER POINT. THE COMMERCIAL SURVEYING CODES SHOWN REFLECT HORIZONTAL, VERTICAL, AND SURFACE MEASUREMENTS.
7. THE BEARINGS SHOWN ON THIS PLAT WERE BASED ON A GRID NORTH GEORGIA STATE PLAT ACCORDING TO THE GEORGIA SURVEYING ACT AND THE RULES OF THE GEORGIA BOARD OF REGISTRATION FOR PROFESSIONAL ENGINEERS AND LAND SURVEYORS. THE BEARINGS SHOWN ON THIS PLAT WERE BASED ON A GRID NORTH GEORGIA STATE PLAT ACCORDING TO THE GEORGIA SURVEYING ACT AND THE RULES OF THE GEORGIA BOARD OF REGISTRATION FOR PROFESSIONAL ENGINEERS AND LAND SURVEYORS.
8. STREAM BUFFERS MAY EXIST WITHIN PROPERTY AND ARE DEPENDENT UPON CLASSIFICATION OF "WATERS OF THE STATE" WHICH IS BASED ON THE ELEVATION & ELEVATION OF THE SURFACE MEASUREMENTS. STREAM BUFFERS MAY EXIST WITHIN PROPERTY AND ARE DEPENDENT UPON CLASSIFICATION OF "WATERS OF THE STATE" WHICH IS BASED ON THE ELEVATION & ELEVATION OF THE SURFACE MEASUREMENTS.
9. PER O.C.G.A. 12-2-13, ADDITIONAL BEARINGS MAY EXIST PER CITY/COUNTY REQUIREMENTS.

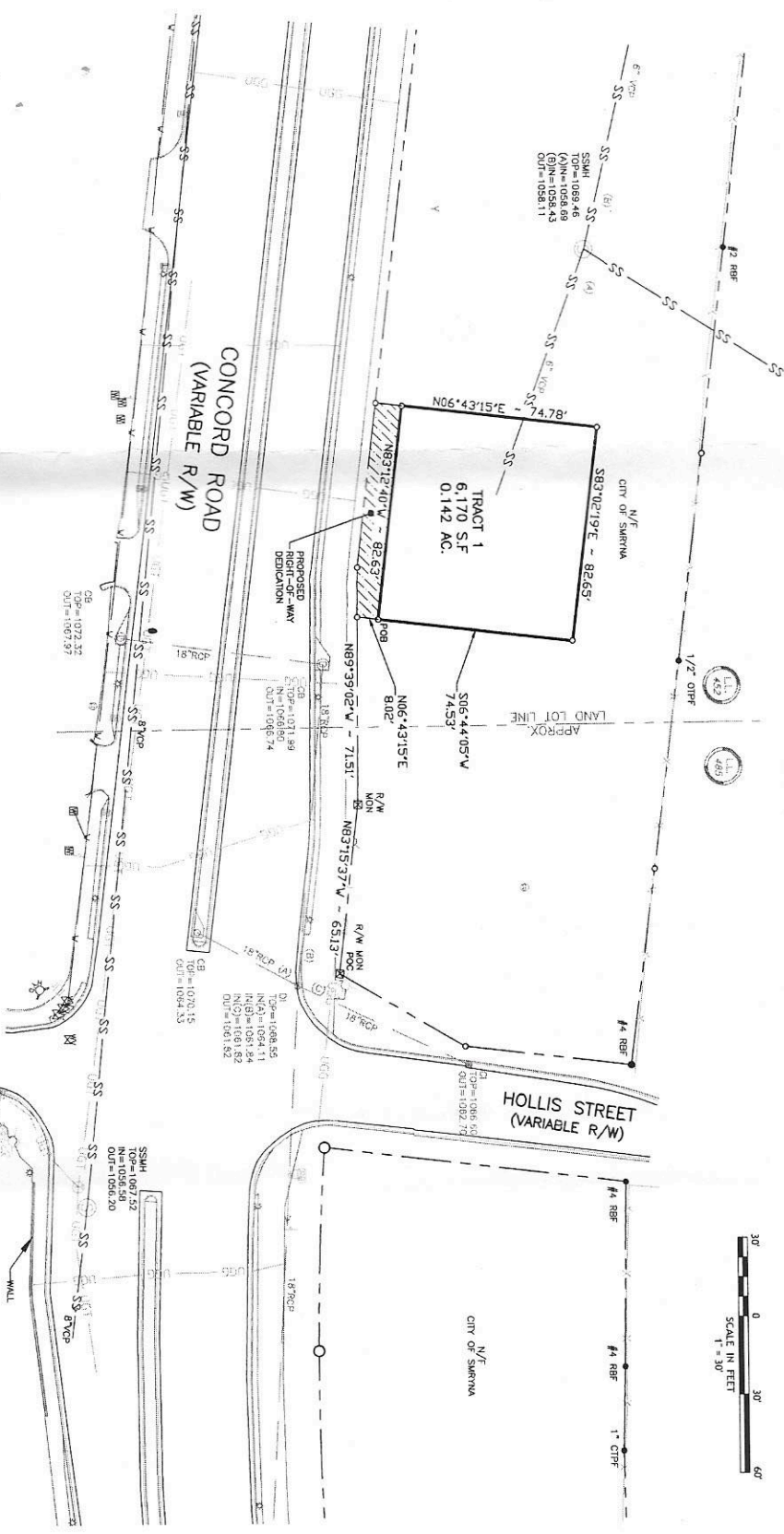
VICINITY MAP



GRID NORTH



GEORGIA WEST ZONE - NAD 83 (2011)



BOUNDARY SURVEY FOR:
 CITY OF SMYRNA
 LAND LOT 452 OF THE 17TH DISTRICT,
 CITY OF SMYRNA, COBB COUNTY, GEORGIA

CROY ENGINEERING
 Engineers
 Planners
 Surveyors
 200 NORTH COBB PARKWAY, BLDG. 400, SUITE 413
 DARIEN, GA 30146
 PHONE: (770) 671-5997 FAX: (770) 671-0420

Project No. 1148.01
 Field Surveyed: 08/20/15
 Drawn By: A.M.
 Checked By: D.H.
 Date of Plot: 03/25/16
 Scale: 1" = 30'

NO.	REVISION	DATE
1	INITIAL ISSUE	03/25/16

SHEET NO.
 1
 OF
 1