

R.S. Webb & Associates

*Cultural Resource Management Consultants
2800 Holly Springs Parkway, Suite 200 • P.O. Drawer 1319
Holly Springs, Georgia 30142
Phone: 770-345-0706 • Fax: 770-345-0707*

September 1, 2015

Mr. Richard Tuley
Tuley & Tuley, Inc.
3745 Cherokee Street NW #605
Kennesaw, Georgia 30144

**Subject: Findings - Partial Delineation of Old Mount Zion Cemetery
1514 Hawthorne Avenue
City of Smyrna, Cobb County, Georgia
R.S. Webb & Associates No. 15-726-001**

Dear Mr. Tuley:

BACKGROUND

On August 27, 2015, Mr. Steve Webb, Senior Principal Archeologist with R.S. Webb & Associates delineated the northern and western boundaries of Mount Zion Cemetery (hereafter referred to as the Cemetery). The Cemetery is located at 1514 Hawthorne Avenue in Smyrna, Georgia and has a concrete block wall along the northern and western cemetery boundaries. A full or partial cemetery delineation may be necessary under State of Georgia Law when there is a proposed change in land use for the land adjacent to or surrounding the cemetery (Official Code of Georgia Sections 36-72-4 and 36-72-5).

METHODS

Boundary Delineation: Mr. Webb, a professional archeologist with experience in delineating historic cemeteries, delineated the western and northern cemetery boundaries through a combination of systematic subsurface probing and surface inspection. Probing involves inserting a 4.0-foot metal rod into the ground at intervals of 1.0 to 3.0 feet searching for loose soil deposits typical of human graves. Surface inspection includes a careful scan of the ground, looking for overturned or partially buried head/foot stones, oblong depressions, ornamental vegetation, and border stones. These techniques were employed as considered necessary within a 15-foot zone beyond the wall bounding the northern and western sides of the Cemetery.

Boundary Marking: Once the northern and western boundaries were located, Mr. Webb marked the boundaries with white pin flags bearing "Cemetery Boundary."

RESULTS

The Cemetery is located on the south side of Hawthorne Avenue on a gentle north-facing slope and flat (Figure 1). The Cemetery is bounded by a graded and partially over-grown parking area (west and northwest), a graded pad where a former church was located (north), and by private property to the east and south. The northwestern part of the Cemetery has been cleared by volunteers and is in grass, while the southern and eastern parts are overgrown (Figure 2).

Surface inspection and probing indicate that most of the Cemetery is contained within an existing concrete block wall (north, west, and southwest boundaries). The northeastern portion is not bounded by the wall, but is clearly marked. In short, the Cemetery appears to be within its previously recognized boundaries as shown on the professional survey in Figure 3.

CONCLUSIONS

It is the opinion of the Principal Archeologist that it is unlikely that human graves lie outside the delineated cemetery boundaries depicted in Figure 3. However unlikely, it is always possible that small graves or heavily disturbed graves may not be detected through probing and surface inspection techniques. If during the course of construction, you uncover what you believe to be human remains, please call us and we will assist you.

CLOSING COMMENTS

Mr. Tuley, we appreciate the opportunity to work with Tuley & Tuley, Inc. on this project. If you have questions or comments about our findings, please contact me at 770-345-0706.

Sincerely,
R.S. WEBB & ASSOCIATES

Robert S. Webb
President and Senior Principal Archeologist

Attachments: Figures 1-3

Scale

0 610 meters

0 2000 feet

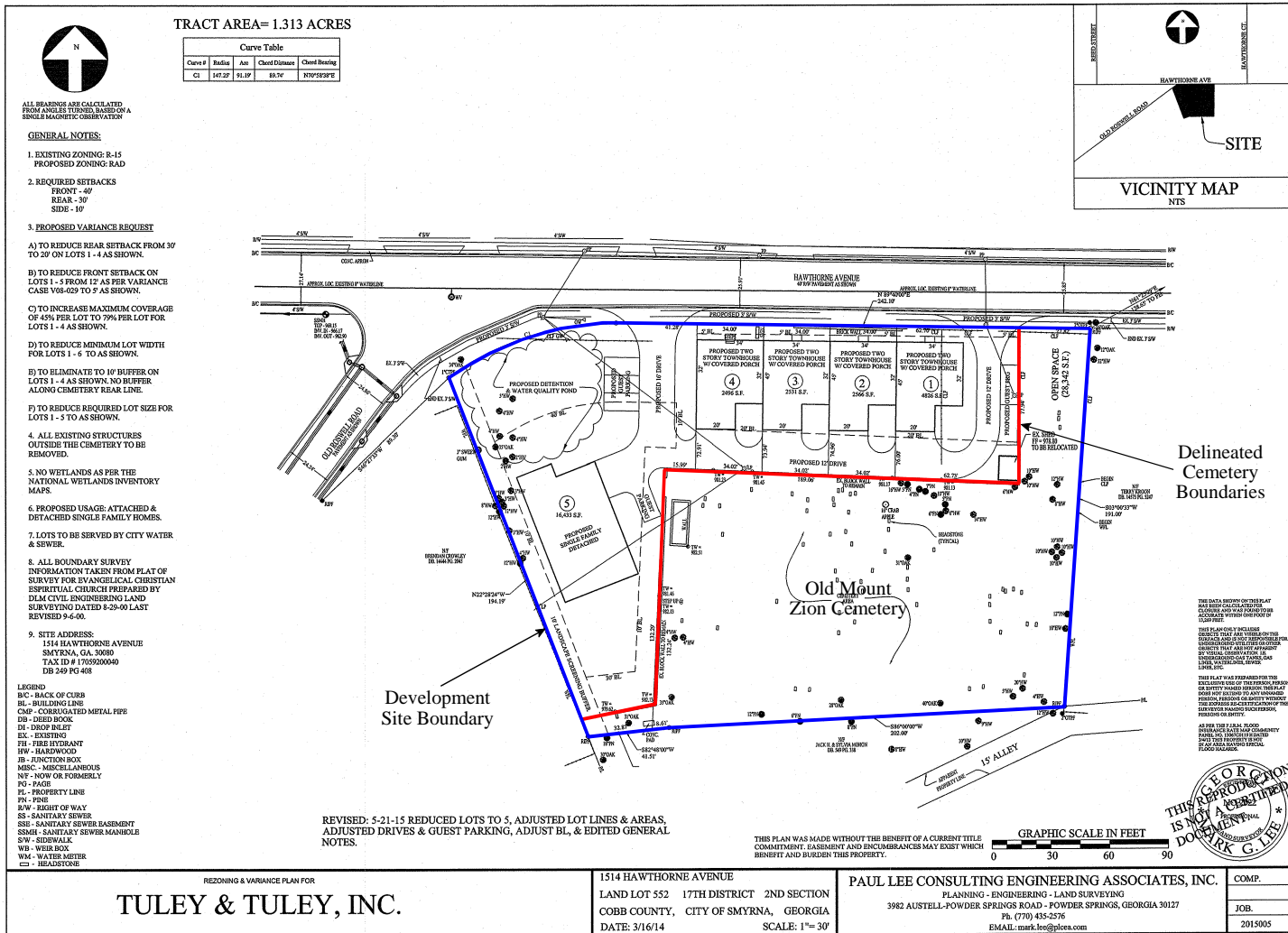


Figure 2 Development Site Showing Delineated Boundaries of Old Mount Zion Cemetery

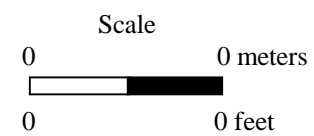


Figure 3 Professional Survey, Delineated Boundaries of Old Mount Zion Cemetery