

# **Chuck Camp Park (CDBG PY16 Funds)**

## **Fieldwork – Resodding and Turf Planing**

### **Scope of Work**

City of Smyrna will hire sole source provider, G2 Turftools, to perform turfplaning services with the use of the unique and patented G2 Turfplaner on Baseball Fields 1, 2, 3, and the Multi-Use Field at Chuck Camp Park. G2 Turftools will also till, blend, and install infield clay mix on the three baseball fields and lay Bermuda Grass sod on the three baseball fields and multi-use field.

In justification for the sole source provider, G2 Turftools, the G2 Turfplaner can leave a finished grade during the grass removal process and alleviate the need to pay additional monies for lazer-grading before sod installation. The unique capability to set a “finished” grade separates this planer from others, and G2 Turftool is the only company in the state of Georgia with this equipment and service. Other turf-planers follow the undulations of the ground, and require subsequent work to prepare the area for sod. The G2 Turfplaner can be set to follow a specific grade, through lazer-levelling, and the result is a sod-ready, finished grade. Please see attached Sole Source Justification form as well as letter from G2 Turftools regarding their legal exclusivity to use the specific G2 Turfplaner tool.

# **Chuck Camp Park (CDBG PY16 Funds)**

## **Fieldwork – Resodding and Turf Planing**

### **Specifications**

G2 Turfplaner will be used for turf planing and levelling Baseball Fields 1,2,3, and the multi-use field for sod preparation.

Bermuda Grass, chosen for its durability and resistance to drought, (see attached spec sheet) will be installed on Baseball Fields 1,2,3, and the multi-use field.

On Baseball Fields 1, 2, and 3, 70/30 Calcined Clay Infield mix will be installed.

On Baseball Fields 1, 2, and 3, six (6) new 50/70 base anchors will be installed

#### **Specifics on each field are below:**

- Multi Use Field – Turfplane entire field with G2 Turfplaner (approx. 75,000 sq. ft.) and install approximately 45,000 sq. ft. Bermuda Sod.
- Baseball Field 1 – Turfplane lips of the field with the G2 Turfplaner around entire infield diamond and outfield arches. Till, blend, and install infield with estimated 18 tons of 70/30 Calcined Clay Infield mix. Install approximately 4,250 sq. ft. of Bermuda Sod. Install 6 new base anchors (50/70 bases).
- Baseball Field 2 - Turfplane lips of the field with the G2 Turfplaner around entire infield diamond and outfield arches. Till, blend, and install infield with estimated 18 tons of 70/30 Calcined Clay Infield mix. Install approximately 4,250 sq. ft. of Bermuda Sod. Install 6 new base anchors (50/70 bases).
- Baseball Field 23 - Turfplane lips of the field with the G2 Turfplaner around entire infield diamond and outfield arches. Till, blend, and install infield with estimated 18 tons of 70/30 Calcined Clay Infield mix. Install approximately 5,040 sq. ft. of Bermuda Sod. Install 6 new base anchors (50/70 bases).

HOME GOLF

## DISCOVERY™ BERMUDAGRASS

Discovery is a unique bermudagrass with an exceptional dark blue-green color and extremely low vertical growth. Once a month mowing is entirely possible with Discovery. With the drought toughness of a bermuda, but without the typical maintenance regime, Discovery is a perfect grass for home and commercial applications. Discovery is a one of a kind grass with great potential for yard, park, golf, or commercial use.



WHERE TO BUY

SPECIFICATION GUIDE

PRODUCT BROCHURE

HOMEOWNERS GUIDE

PROFESSIONALS GUIDE

### RELATED PRODUCTS



## DISCOVERY™ CHARACTERISTICS

### USES

- Golf, Commercial, Sports/Parks, Home
- Blade-width: 1.8 mm
- Feel: Soft
- Soils: Sandy, Clay
- Growth: Lateral

### COLOR

- Color: Dark Green
- Fall Color Retention: Very Good
- Spring Green Up: Very Good

### MAINTENANCE

- Mower: Standard Rotary, Reel
- Height: 0.5-1.5"
- Weed Control: Very Good
- Insect Resistance: Very Good
- Disease Resistance: Very Good

**WEAR TOLERANCE**

- Wear: Very Good
- Injury Recovery: Very Good

**SHADE TOLERANCE**

- Shade: Good

**DROUGHT TOLERANCE**

- Drought: Excellent

**DISCOVERY™ MAINTENANCE****Mowing Frequency**

Height: 0.5-1.5 inches

**Fertilization Frequency**

Spring Use 1-0-1  
 Summer Use 1-0-1  
 Fall Use 1-0-2

**Watering Frequency**

1 inch per week

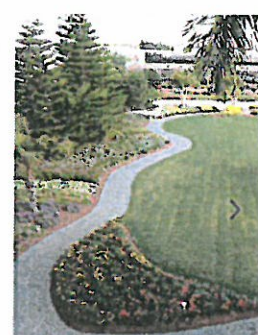
**Disease Resistance**

Very Resistant

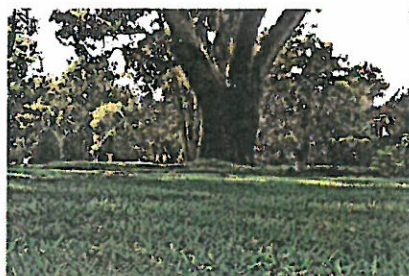
**MAINTENANCE & CARE DOWNLOADS**

HOMEOWNERS

PROFESSIONALS

**THE LATEST FROM SOD SOLUTIONS****RECENT ARTICLES****Choosing The Right Grass For Shade**

"Which grass is best for shade?" is one of our most frequently-asked questions. Shade is one of the most challenging...







Sod Solutions helps simplify the turf grass specification process

Today's wide range of natural turf options

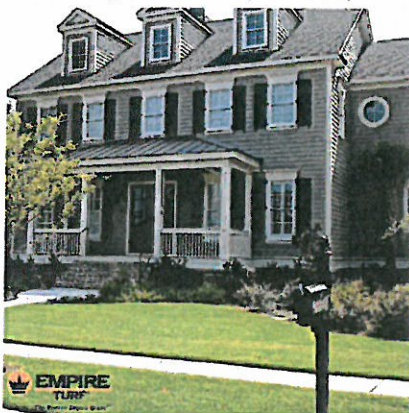


Celebration Growers Gather in Texas on the Eve of the TNLA Show

In late August, about 20 Texas Celebration Bermudagrass producers gathered for a growers meeting in downtown Houston. ...

Beginning of Spring Maintenance Ensures Health of Bermudagrass Throughout the Summer

The start of spring is time for those with bermudagrass to take important steps to



EMPIRE Turf® Helps Florida Builders Earn Green Credits

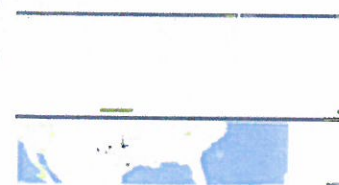
Real estate professionals will tell you that curb appeal is crucial when trying to sell a home. A lush green lawn is the...

HGT Growers Share Strategies and a Baseball Game

The 2016 HGT producers' meeting was held on Thursday, August 11 in Chicago, IL. Eleven producers, representing almost ...

St. Augustine Breeding Program at NCSU reports progress in many new lines

Turfgrass areas account for a large portion of urban and suburban landscapes, beautifying millions of home lawns and pro...



Turf Logistics Update - September 2016

The Turf Logistics Team is proud to announce the release of our latest version of Turf Logistics. Our team has been hard...

North Carolina State Field Day Showcases the Future

Over 800 landscape professionals were in attendance at the NC State Field Day on August 10th to witness a historic day f...

Farewell from Sod Solution's Justin Wallace: Heading to Guatemala for Mission Work

To all of my friends and acquaintances that I have come to know over the past 9 years while at Sod Solutions, this is a ...