



SMYRNA
jounguil city
GEORGIA

South Cobb Drive Corridor Improvement Study



Smyrna City Council
June 1, 2017

CROY
ENGINEERING

Engineers
Planners
Surveyors



VISION AND GOALS

- Enhance pedestrian and vehicular safety
- Promote multi-modal use
- Facilitate connectivity
- Encourage development and redevelopment
- Improve aesthetics
- Enhance quality of life



STUDY PARTNERS

- Smyrna Community Development
- Georgia Department of Transportation District Office and Office of Planning
- Atlanta Regional Commission
- Cobb Linc and Cobb DOT
- Cobb County Community Development
- Coordinated with Spring Road LCI and Georgia Tech Cumberland Study



PUBLIC ENGAGEMENT

- Public Information Open Houses:
 - October 18, 2016
 - February 7, 2017
- Smyrna Food Truck Tuesday
- Fall Jonquil Festival
- Ward 5 Public Meeting
 - December 8, 2016
- Smyrna Area Chamber of Commerce Meeting

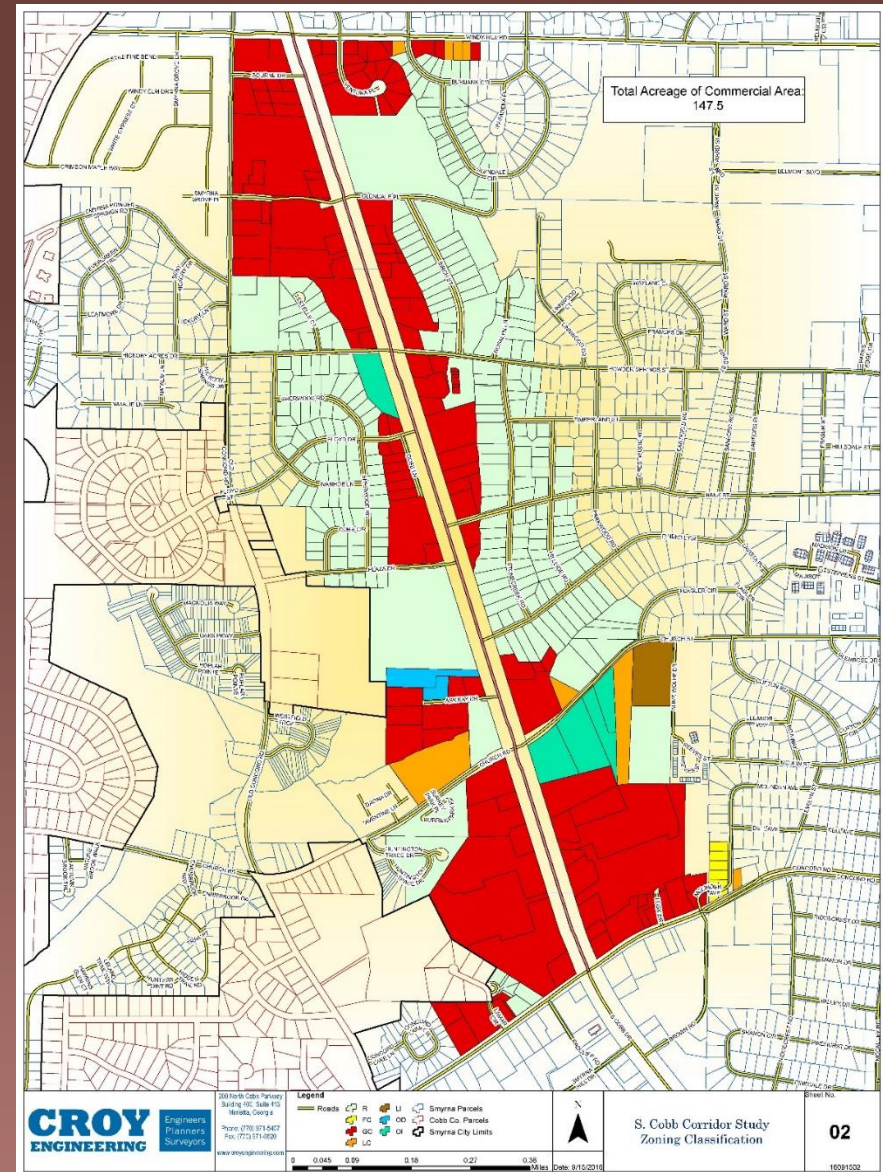




ZONING AND LAND USE RECOMMENDATIONS

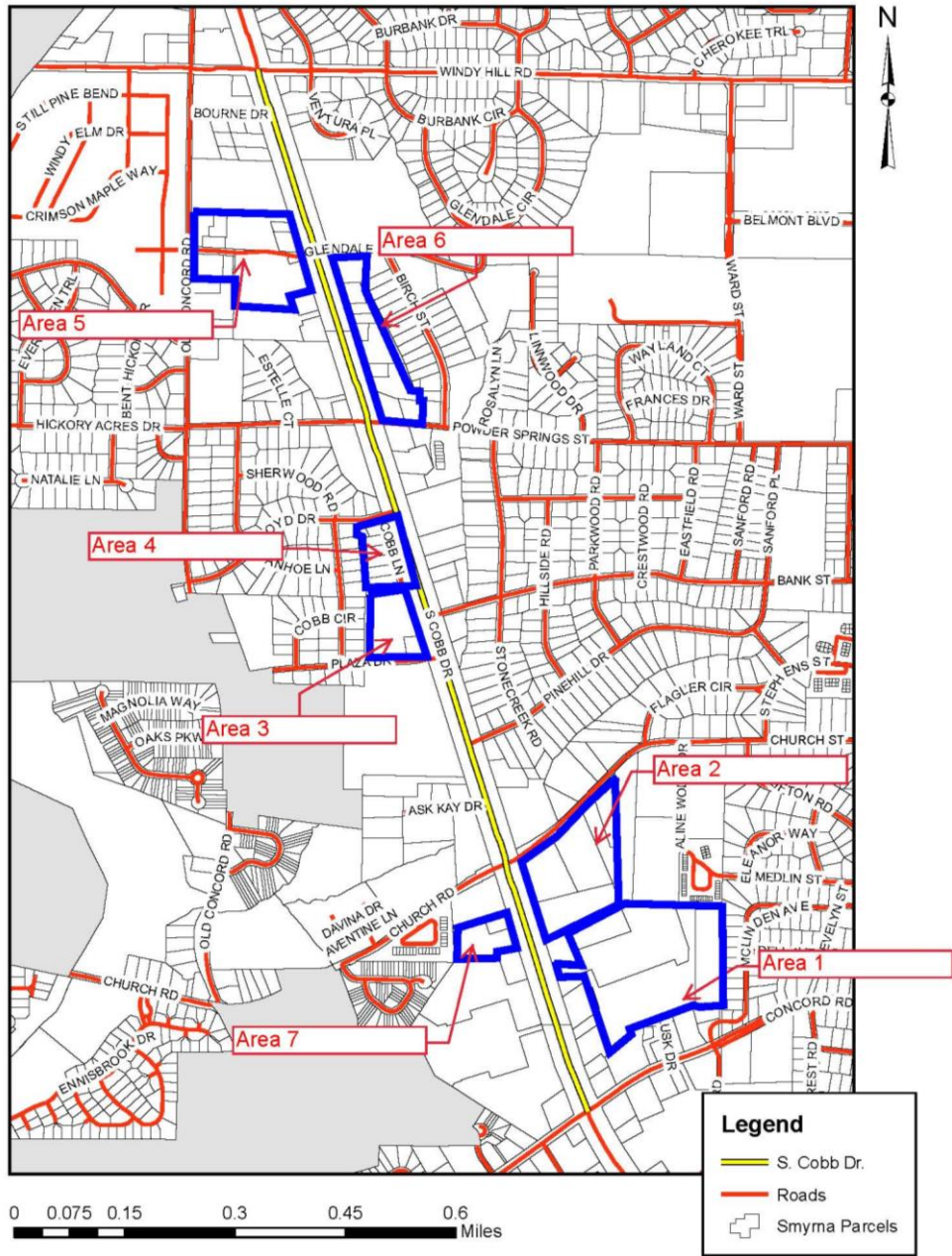
EXISTING LAND USE

- Study Area – 147.5 Acres
- Residential Parcels – 400
- Commercial Parcels – 153
 - 85% Zoned General Commercial
 - 15% Auto-Centric



POTENTIAL AREAS OF REDEVELOPMENT

Map A
South Cobb Drive
Redevelopment Opportunities





RECOMMENDATIONS

All proposed redevelopment areas should be reflected in the Future Land Use Plan as mixed use.

The South Cobb Design Corridor standards should be amended to encourage quality commercial redevelopment, protection of the adjacent neighborhoods, more inter-parcel connectivity and sustainable mixed use development.

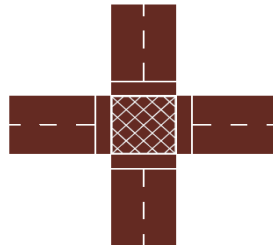


DESIGN CONCEPTS

UNIVERSAL DESIGN CONCEPTS



LANDSCAPING/
ROAD
BEAUTIFICATION



INTERSECTION
IMPROVEMENTS AT
POWDER SPRINGS
STREET AND SOUTH
COBB DRIVE



POCKET PARK AT
CHURCH STREET
AND SOUTH COBB
DRIVE



MULTI-USE PATHS ON
BOTH SIDES OF
SOUTH COBB DRIVE

UNIVERSAL DESIGN CONCEPTS



ACCESS
MANAGEMENT
ALONG CORRIDOR



SIDEWALKS AND
SHARROWS ON SIDE
STREETS



MULTI-USE PATHS ON BOTH SIDES OF STREET



POCKET PARK





SIDEWALKS AND SHARROWS



LANDSCAPING AND BEAUTIFICATION





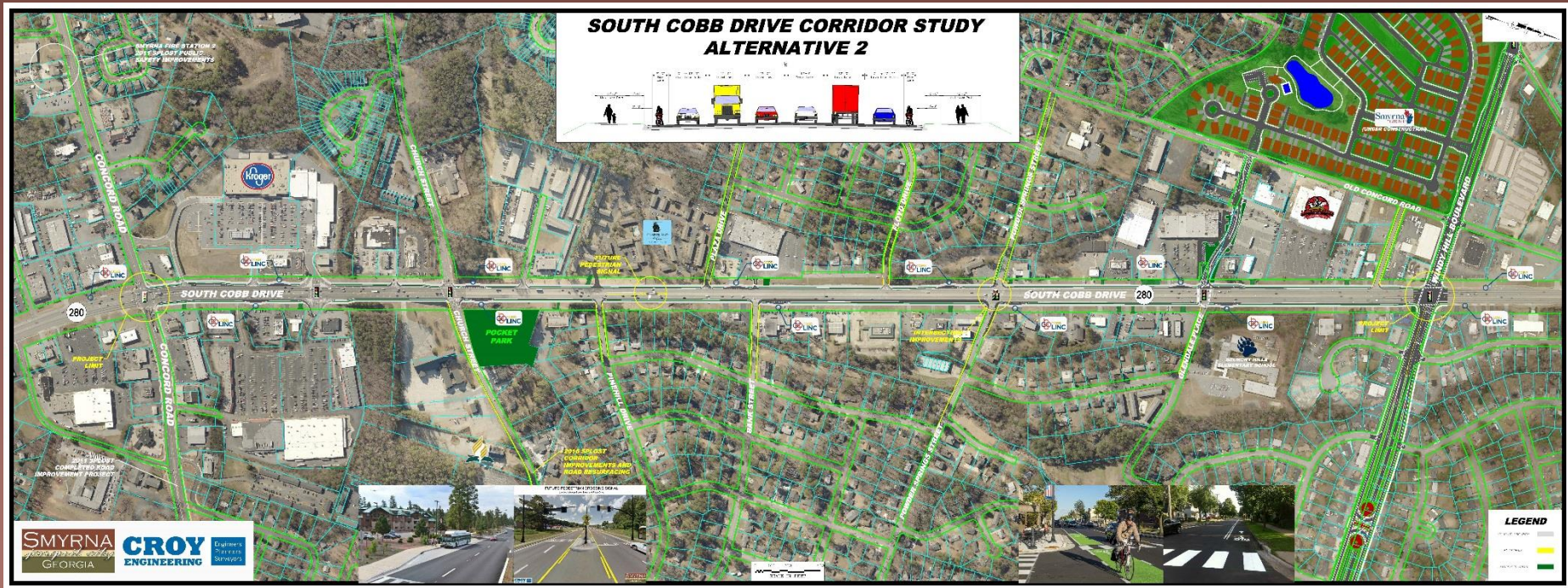
ACCESS MANAGEMENT

Control locations of where and how traffic enters and exits roadway

- With fewer vehicular conflict points:
 - Improve traffic flow
 - Reduce crashes
- Potential techniques:
 - Consolidate driveways
 - Construct medians



CORRIDOR IMPROVEMENT CONCEPTS



CONCEPT 2



CONCEPT 2



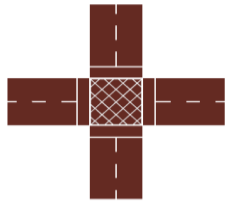
LANDSCAPING/
ROAD
BEAUTIFICATION



POCKET PARK AT
CHURCH STREET
AND SOUTH COBB
DRIVE



MULTI-USE PATHS ON
BOTH SIDES OF
SOUTH COBB DRIVE



INTERSECTION
IMPROVEMENTS AT
POWDER SPRINGS
STREET AND SOUTH
COBB DRIVE

UNIVERSAL DESIGN CONCEPTS



ACCESS
MANAGEMENT
ALONG CORRIDOR



SIDEWALKS AND
SHARROWS ON SIDE
STREETS



FUTURE PEDESTRIAN CROSSING SIGNAL
Located on South Cobb Drive south of Plaza Drive





CONCEPT 3



CONCEPT 3



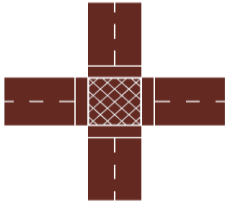
LANDSCAPING/
ROAD
BEAUTIFICATION



POCKET PARK AT
CHURCH STREET
AND SOUTH COBB
DRIVE



MULTI-USE PATHS ON
BOTH SIDES OF
SOUTH COBB DRIVE



INTERSECTION
IMPROVEMENTS AT
POWDER SPRINGS
STREET AND SOUTH
COBB DRIVE

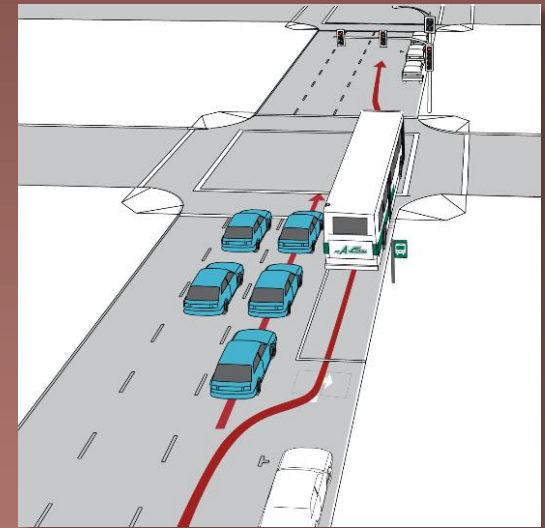
UNIVERSAL DESIGN CONCEPTS

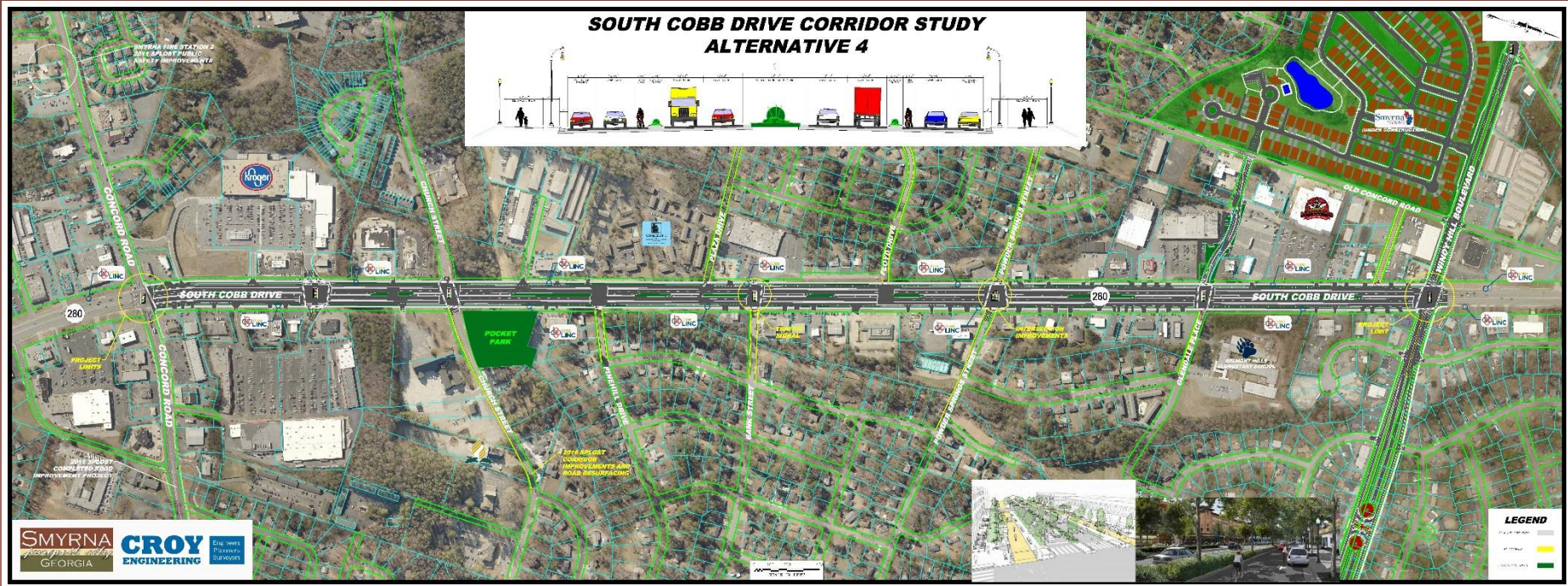


ACCESS
MANAGEMENT
ALONG CORRIDOR



SIDEWALKS AND
SHARROWS ON SIDE
STREETS





CONCEPT 4



CONCEPT 4



POCKET PARK AT
CHURCH STREET
AND SOUTH COBB
DRIVE

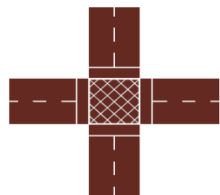


LANDSCAPING/
ROAD
BEAUTIFICATION



MULTI-USE PATHS ON
BOTH SIDES OF
SOUTH COBB DRIVE

UNIVERSAL DESIGN CONCEPTS



INTERSECTION
IMPROVEMENTS AT
POWDER SPRINGS
STREET AND SOUTH
COBB DRIVE



ACCESS
MANAGEMENT
ALONG CORRIDOR



SIDEWALKS AND
SHARROWS ON SIDE
STREETS



QUESTIONS

