

BACKYARD OUTFITTERS, INC  
FRANKLIN, TN 37064

GENERAL NOTES:

1. STRUCTURE HAS BEEN DESIGNED IN ACCORDANCE WITH THE 2009 INTERNATIONAL RESIDENTIAL CODE AND THE 2009 INTERNATIONAL BUILDING CODE.
2. ALL MATERIALS AND CONSTRUCTION SHALL BE IN ACCORDANCE WITH THE ABOVE CODES AT THE TIME OF MANUFACTURE.
3. DRAWINGS SHALL NOT BE SCALED FOR DIMENSIONS.
4. STRUCTURES ARE CLASSIFIED AS "MINOR STORAGE FACILITIES" (OCCUPANCY CATEGORY I) AND SHOULD NOT BE USED FOR HUMAN HABITATION.
5. STRUCTURES ARE DESIGNED FOR LOCATIONS THAT HAVE A 3 SECOND WIND GUST OF 90 MPH. STRUCTURES SHOULD NOT BE USED IN OTHER LOCATIONS.
6. SIDING FASTENERS SHALL NOT BE INSTALLED IN PANEL SIDING GROOVES IN THE FIELD OF THE PANEL OR WHEN THE SIDING GROOVES OCCUR AT CUT EDGES OF THE SIDING PANEL.
7. STRUCTURES ARE DESIGNED FOR LOCATIONS THAT ARE NOT IN FLOOD HAZARD AREAS. STRUCTURES SHOULD NOT BE USED IN OTHER LOCATIONS.
8. STRUCTURES ARE DESIGNED FOR LOCATIONS THAT HAVE A MAXIMUM GROUND SNOW LOAD OF 60 PSF AND A PARTIALLY EXPOSED TERRAIN CATEGORY AND SHOULD NOT BE USED IN OTHER LOCATIONS.
9. STRUCTURES SHOULD HAVE 25 YEAR RATED FIBERGLASS/ ASPHALT SHINGLES OR 29 GA METAL ROOF OVER WOOD SHEATHING.

10. WOOD FRAMING SHALL COMPLY WITH THE ANSI/AF&PA "NATIONAL DESIGN SPECIFICATION (NDS) FOR WOOD CONSTRUCTION", 2005.
11. ALL ROOF DECKING IS TO BE 7⁄16" O.S.B.
12. ALL SIDING IS TO BE 1⁄2" or 5⁄8" TREATED T1-11 PLYWOOD.
13. ALL FLOOR JOISTS ARE TO BE PRESSURE TREATED SYP #2, OR BETTER.
14. ALL UN-TREATED WOOD FRAMING IS TO BE TO BE SPF #2 OR BETTER.
15. ALL EXTERIOR NAILS ARE TO BE ZINC COATED.
16. ALL FLOOR DECKING IS TO BE 5⁄8" OR 3⁄4" PLYWOOD.
17. ALL SKIDS ARE TO BE 4x6 PRESSURE TREATED, RATED FOR GROUND CONTACT.

ITEMS BY OTHERS:  
THE FOLLOWING ITEMS ARE TO BE SUPPLIED AND INSTALLED BY OTHERS. THESE ITEMS MAY BE SUBJECT TO LOCAL JURISDICTION APPROVAL. BACKYARD OUTFITTERS IS NOT RESPONSIBLE FOR THESE ITEMS.

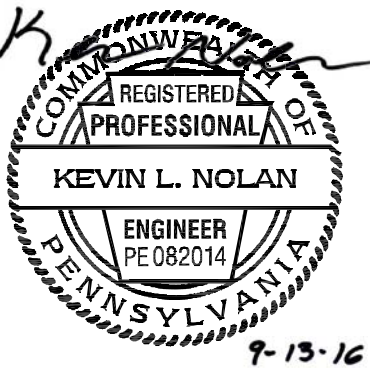
1. THE COMPLETE FOUNDATION AND TIE-DOWN SYSTEM
2. RAMPS, STAIRS, AND GENERAL ACCESS
3. ELECTRICAL SERVICE HOOKUP

DESIGN CRITERIA:

1. DESIGN LOADS ARE IN ACCORDANCE WITH THE INTERNATIONAL BUILDING CODE, 2009 OCCUPANCY CATEGORY I
2. LIVE LOADS:  
FLOOR: 40 PSF  
LOFT: 5 PSF  
ROOF: 20 PSF
3. SNOW LOADS ARE BASED ON THE FOLLOWING:  
GROUND SNOW LOAD, Pg = 60 PSF  
FLAT ROOF SNOW LOAD, Pf = 40 PSF  
EXPOSURE FACTOR, Ce = 1.0  
IMPORTANCE FACTOR, I = 0.8  
THERMAL FACTOR, Ct = 1.2
4. WIND LOADS ARE BASED ON THE FOLLOWING:  
DESIGN WIND SPEED: V = 90 MPH  
EXPOSURE CATEGORY B  
IMPORTANCE FACTOR, I = 0.87  
INTERNAL PRESSURE COEFFICIENT:  
GCpi = ±0.18  
COMPONENTS & CLADDING:  
ROOF-ZONE 1 = 6.9, -11.4 PSF  
ROOF-ZONE 2 = 6.9, -19.1 PSF  
ROOF-ZONE 3 = 6.9, -28.6 PSF  
WALL-ZONE 4 = 12.7, -13.8 PSF  
WALL-ZONE 5 = 12.7, -17.1 PSF

PIERS (IF REQUIRED):

1. PIERS ARE NOT REQUIRED WHEN THE SKIDS CAN BE SUPPORTED ON FIRM, LEVEL GROUND.
2. PIERS SHALL TYPICALLY BE 8"x16" CONCRETE BLOCKS, DRY STACKED TO A MAXIMUM HEIGHT OF 3 FEET. CORNER PIERS OVER 16" TALL SHALL BE DOUBLE STACKED CONCRETE BLOCKS. TIE DOUBLE STACKED BLOCKS BY ALTERNATING THE DIRECTION OF BLOCKS ON EACH ROW. TREATED LUMBER WITH A MINIMUM BEARING AREA OF APPROXIMATELY 128 SQUARE INCHES MAY BE USED FOR PIERS LESS THAN 12" HIGH.
3. BACKYARD OUTFITTERS IS NOT RESPONSIBLE FOR THE PREPARATION OF THE PROPOSED SITE OR DETERMINATION OF THE SITE'S SUITABILITY TO SUPPORT THE PROPOSED STRUCTURE. IT IS THE PROPERTY OWNER'S RESPONSIBILITY TO DETERMINE IF SITE CONDITIONS ARE SUITABLE TO SUPPORT THE STRUCTURE.
4. PIERS SHOWN ON SHEET S-1 ARE CONCEPTUAL AND MAY NOT REFLECT ACTUAL CONDITIONS. THE PIER LAYOUT MAY BE ADJUSTED AS NEEDED BASED ON SITE CONDITIONS, PROVIDED THAT THE MAXIMUM SPACING SHOWN IS NOT EXCEEDED.

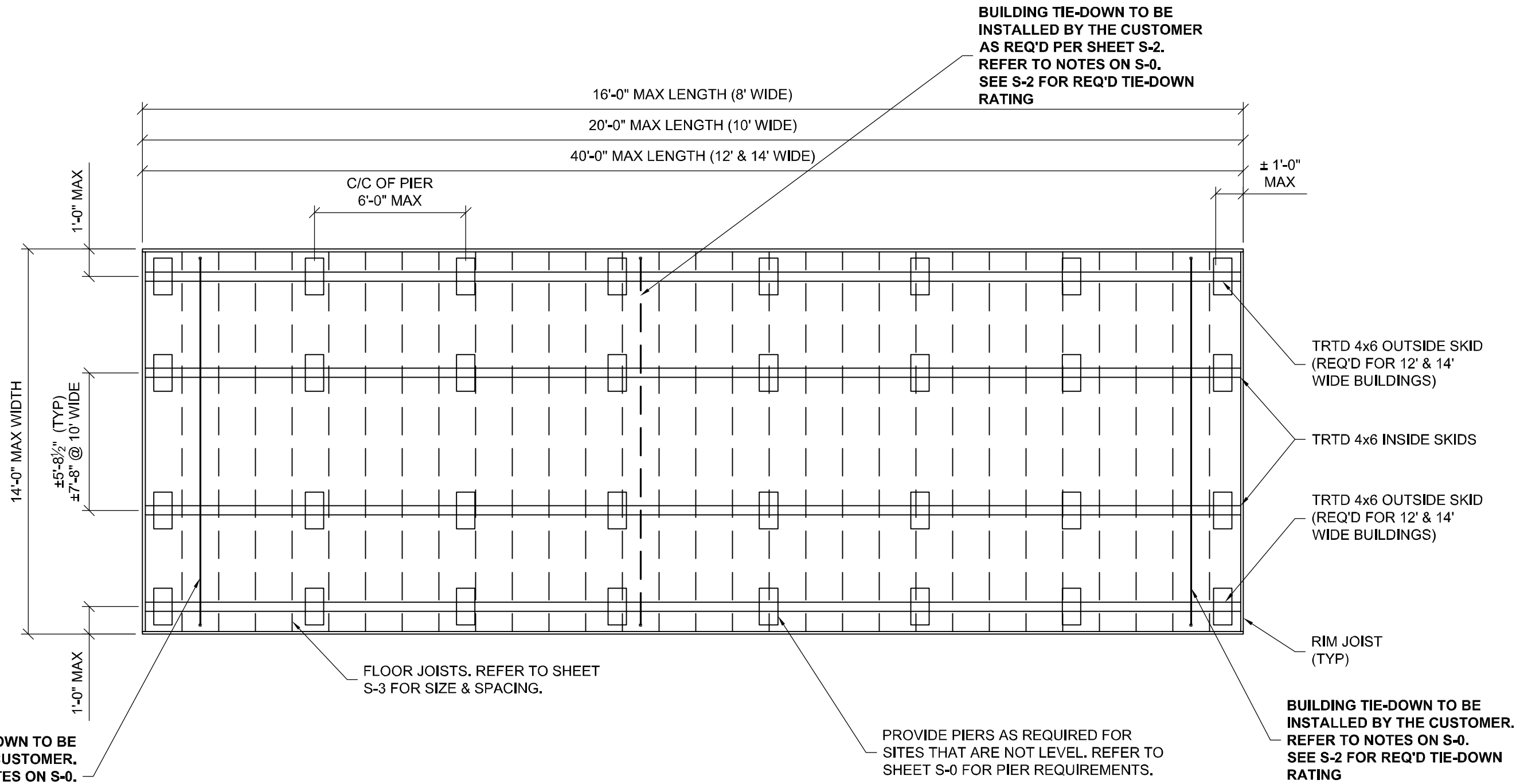


LOFTED BARN

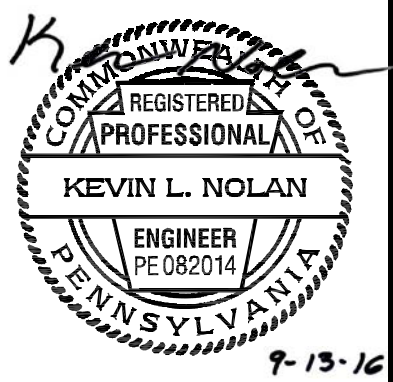


PROJECT NO:	
DATE:	09-13-2016
DRAWN BY:	KLN
CHECKED BY:	KLN
REVISION:	

SHEET NUMBER  
**S-0-LB-PA**  
SCALE:



FLOOR FRAMING PLAN



# LOFTED BARN

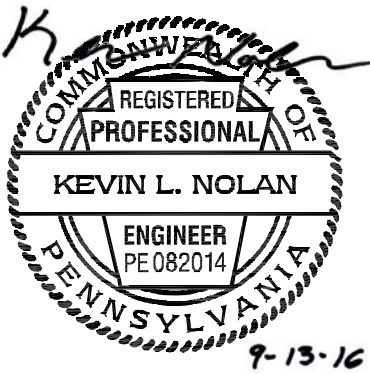
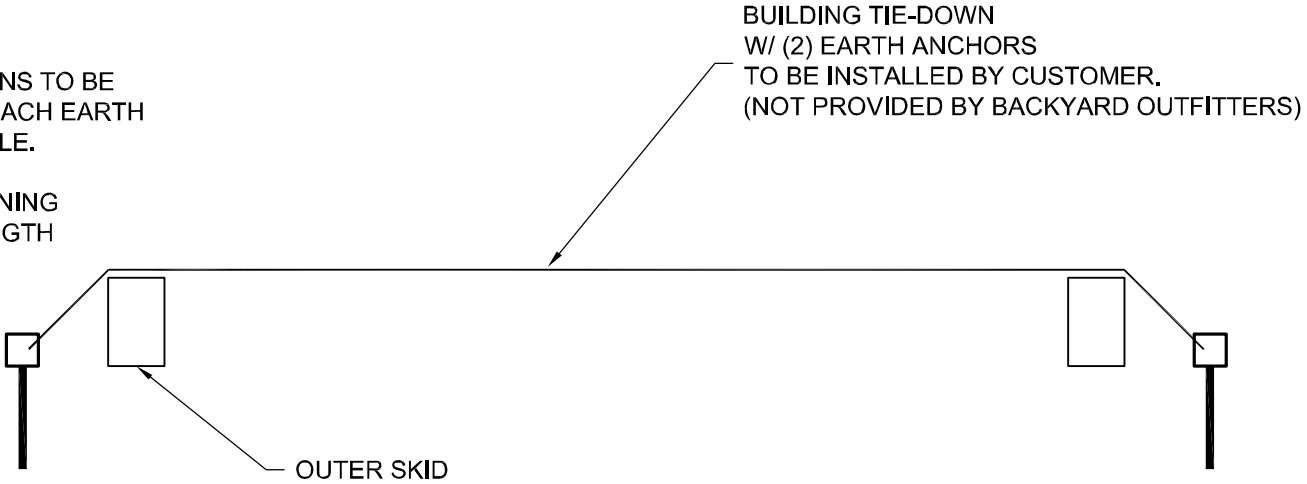


PROJECT NO:	
DATE:	09-13-2016
DRAWN BY:	KLN
CHECKED BY:	KLN
REVISION:	

SHEET NUMBER  
**S-1-LB-PA**  
SCALE: NOT TO SCALE

UPLIFT ANCHORAGE SCHEDULE								
BLDG LENGTH	8' WIDE BLDGS		10' WIDE BLDGS		12' WIDE BLDGS		14' WIDE BLDGS	
	NUMBER OF TIE-DOWNS	REQ'D ANCHOR CAPACITY	NUMBER OF TIE-DOWNS	REQ'D ANCHOR CAPACITY	NUMBER OF TIE-DOWNS	REQ'D ANCHOR CAPACITY	NUMBER OF TIE-DOWNS	REQ'D ANCHOR CAPACITY
10'-0"	2	350#	2	300#	-	-	-	-
12'-0"	2	400#	2	300#	-	-	-	-
14'-0"	2	450#	2	350#	-	-	-	-
16'-0"	2	500#	2	350#	2	300#	-	-
18'-0"	-	-	3	300#	2	350#	-	-
20'-0"	-	-	3	300#	2	350#	2	300#
22'-0"	-	-	-	-	2	400#	2	300#
24'-0"	-	-	-	-	2	450#	2	350#
26'-0"	-	-	-	-	2	500#	2	400#
28'-0"	-	-	-	-	2	500#	2	400#
30'-0"	-	-	-	-	3	400#	3	300#
32'-0"	-	-	-	-	3	400#	3	300#
34'-0"	-	-	-	-	3	450#	3	350#
36'-0"	-	-	-	-	3	450#	3	350#
38'-0"	-	-	-	-	3	500#	3	350#
40'-0"	-	-	-	-	3	500#	3	400#

- NOTES:
- 1) TIE-DOWNS AND EARTH ANCHORS ARE TO BE SUPPLIED AND INSTALLED BY THE CUSTOMER. BACKYARD OUTFITTERS IS NOT RESPONSIBLE FOR THE TIE-DOWN SYSTEM. REFER TO NOTE SHEET S-0.
- 2) THE SCHEDULE INDICATES THE RECOMMENDED NUMBER OF BUILDING TIE-DOWNS TO BE INSTALLED BY THE CUSTOMER. EACH TIE-DOWN HAS TWO EARTH ANCHORS. EACH EARTH ANCHOR IS TO BE RATED FOR AT LEAST THE CAPACITY SHOWN IN THE SCHEDULE.
- 3) AT A MINIMUM, PROVIDE A TIE-DOWN NEAR EACH END OF THE BUILDING. REMAINING TIE-DOWNS (IF REQUIRED) SHOULD BE EVENLY SPACED ALONG THE ENTIRE LENGTH OF BUILDING.

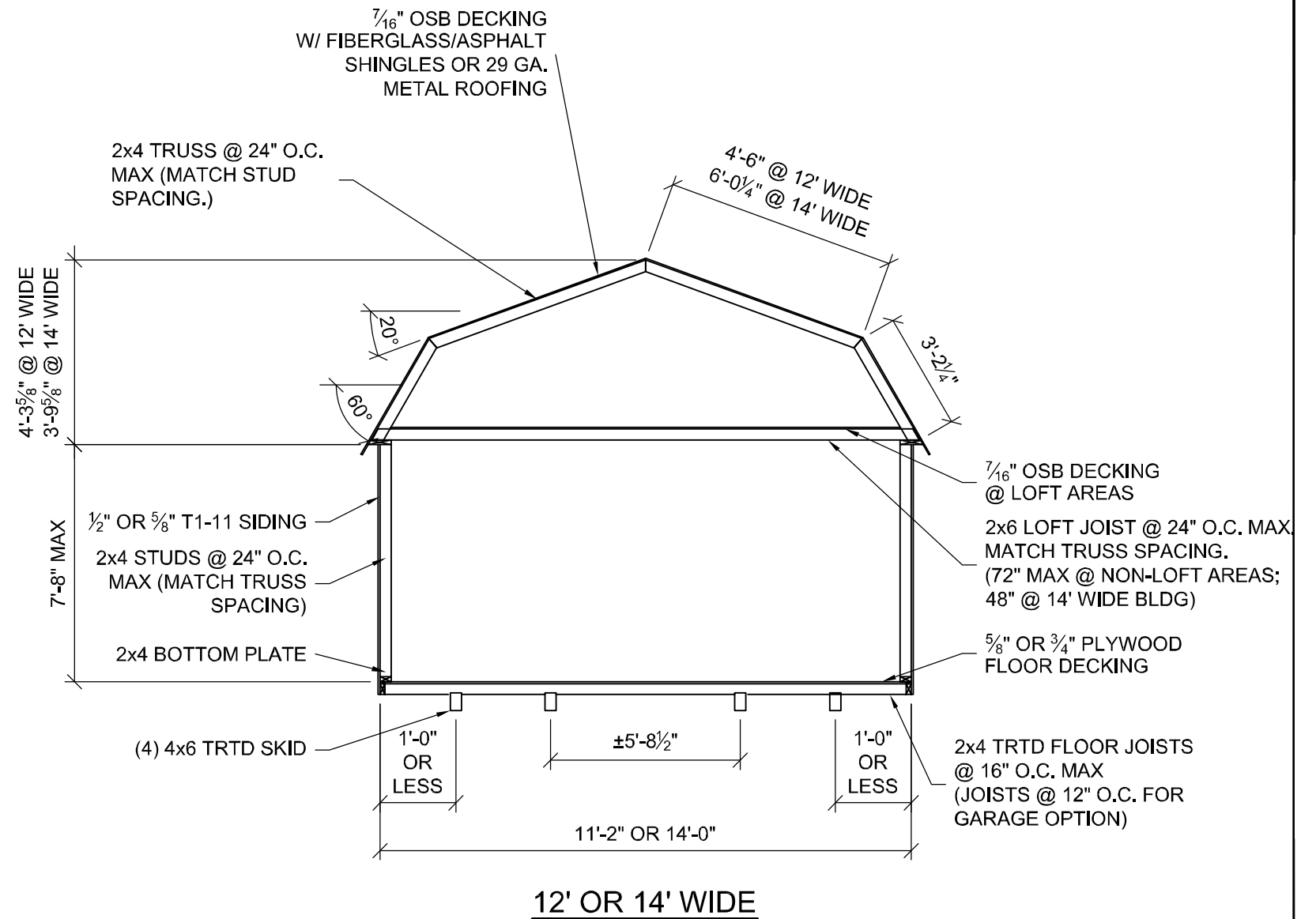
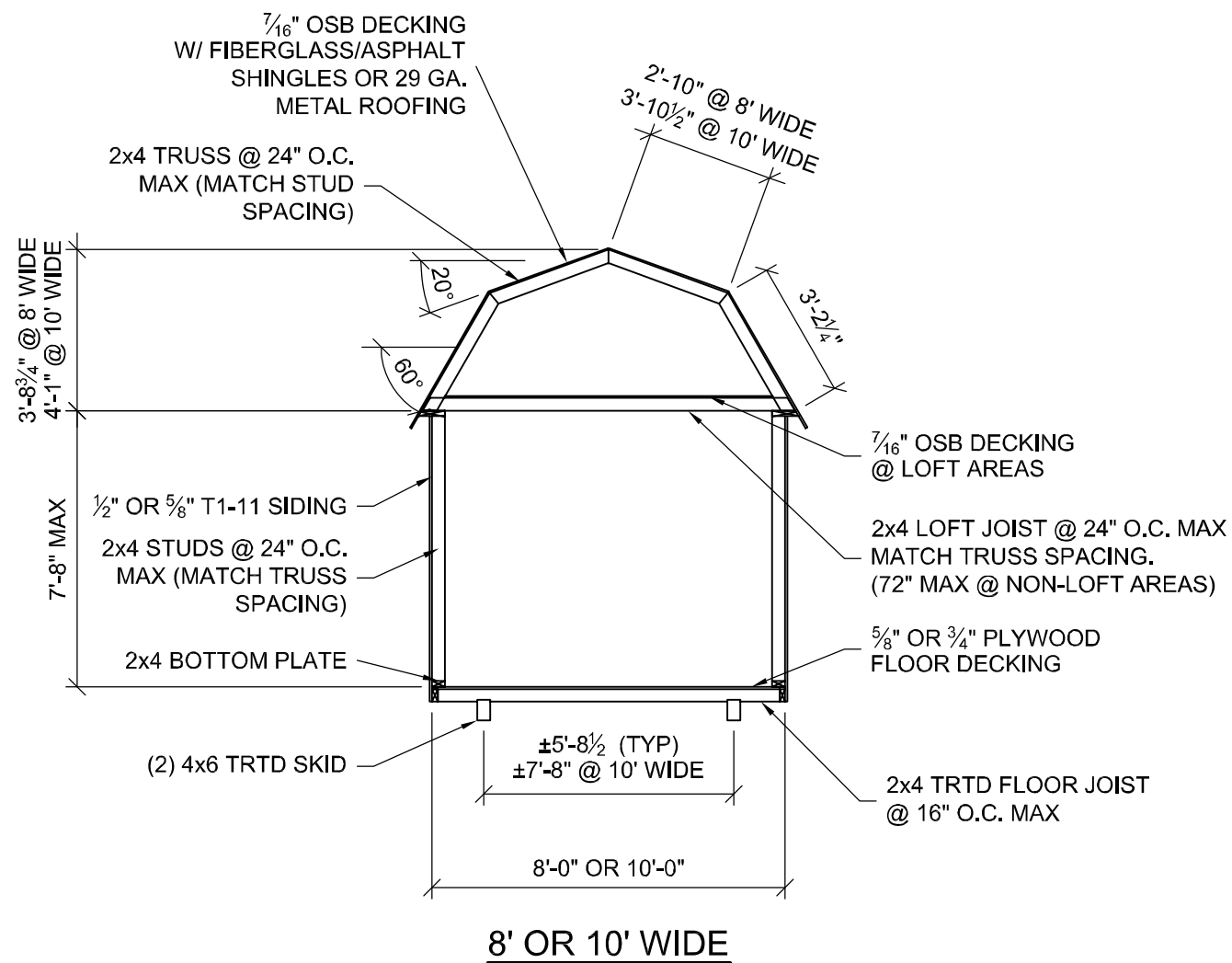


# LOFTED BARN

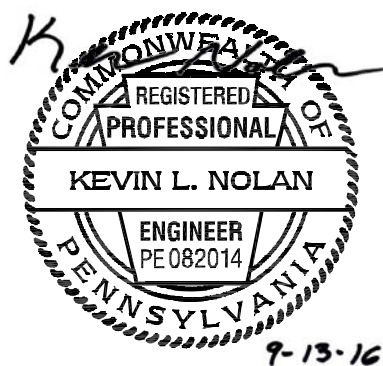


PROJECT NO:	
DATE:	09-13-2016
DRAWN BY:	KLN
CHECKED BY:	KLN
REVISION:	

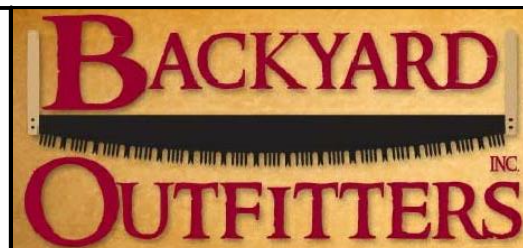
SHEET NUMBER  
**S-2-LB-PA**  
SCALE:



BUILDING SECTION

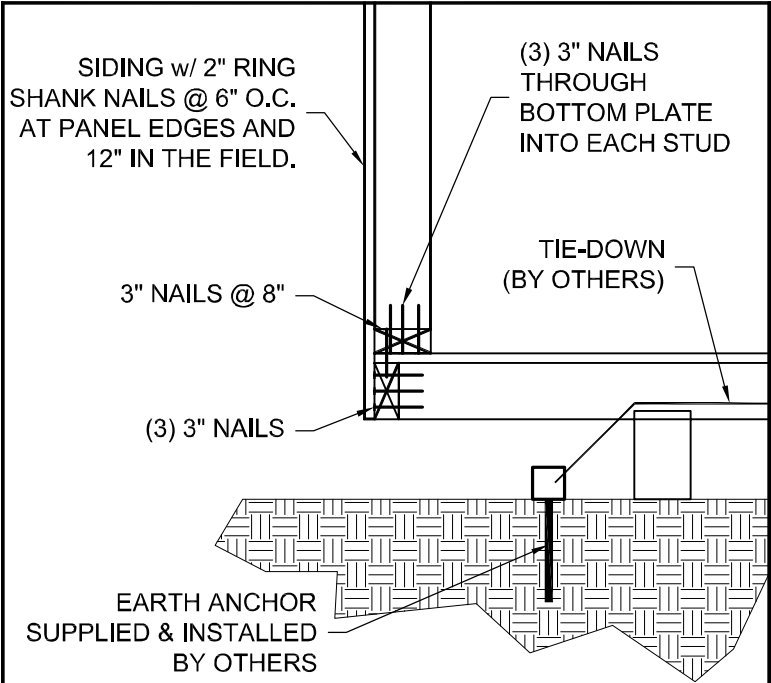


# LOFTED BARN

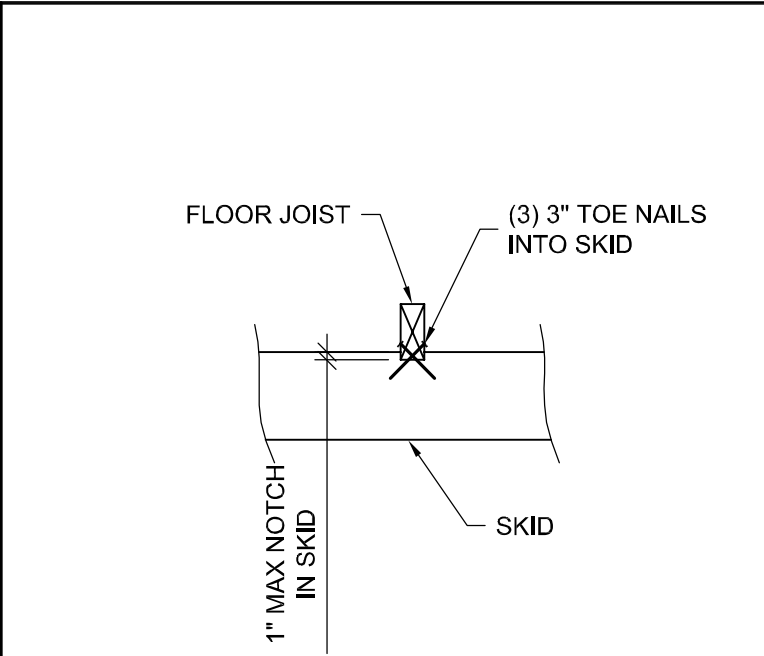


PROJECT NO:	
DATE:	09-13-2016
DRAWN BY:	KLN
CHECKED BY:	KLN
REVISION:	

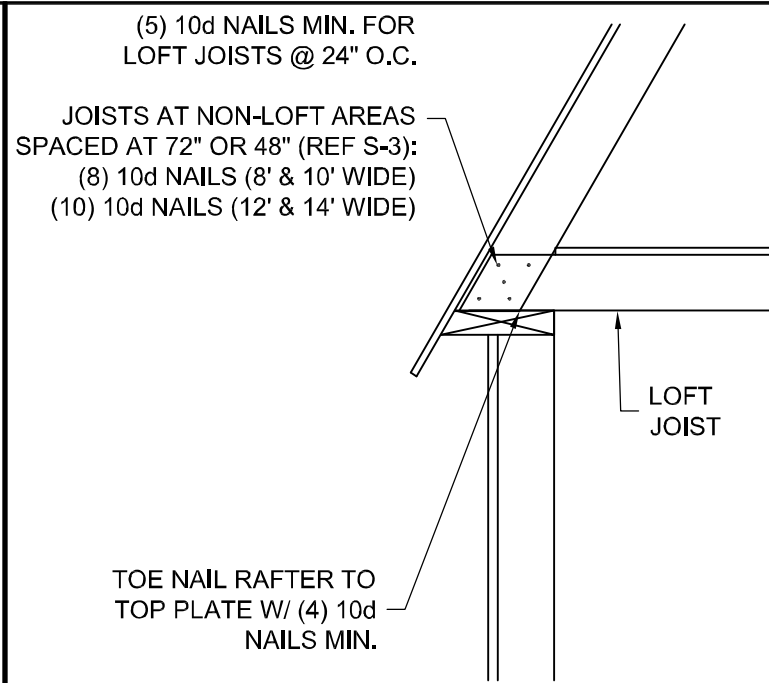
SHEET NUMBER
<b>S-3-LB-PA</b>
SCALE: NOT TO SCALE



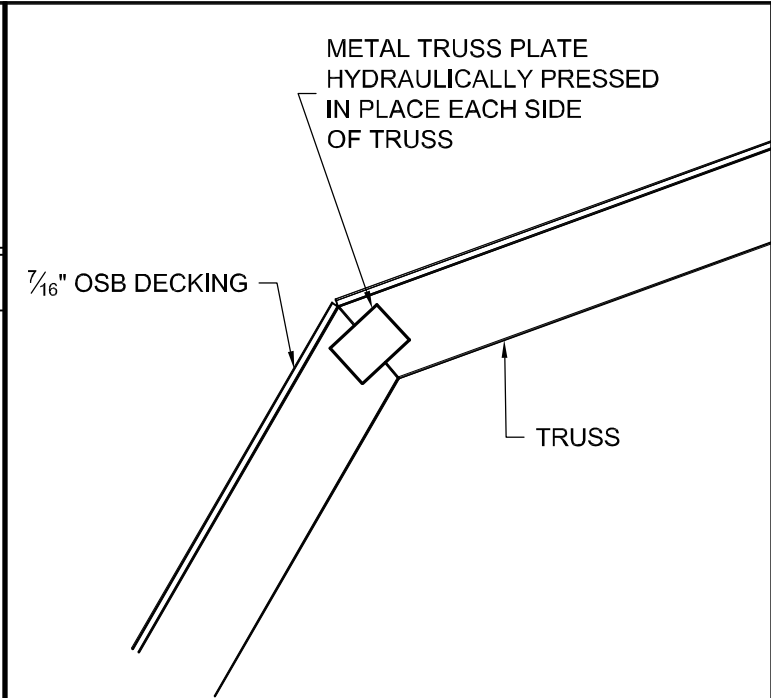
1-TYPICAL DETAIL



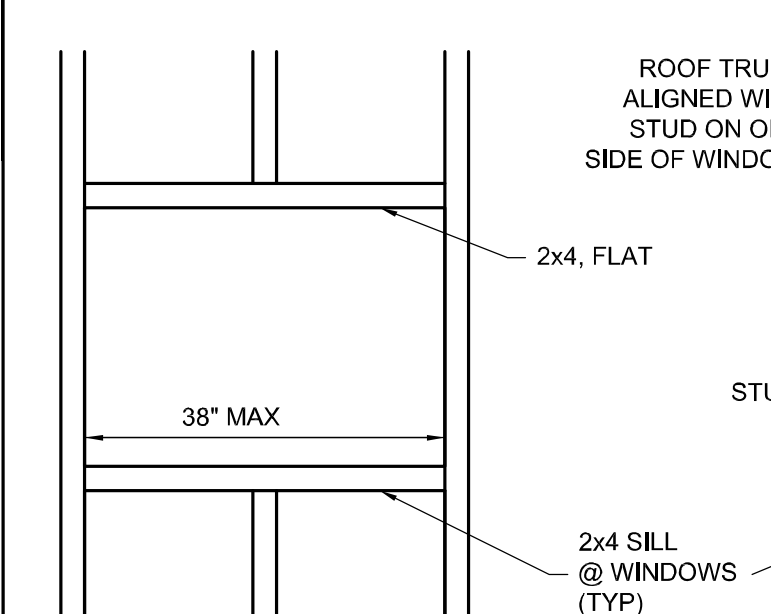
2-FLOOR JST TO SKID DETAIL



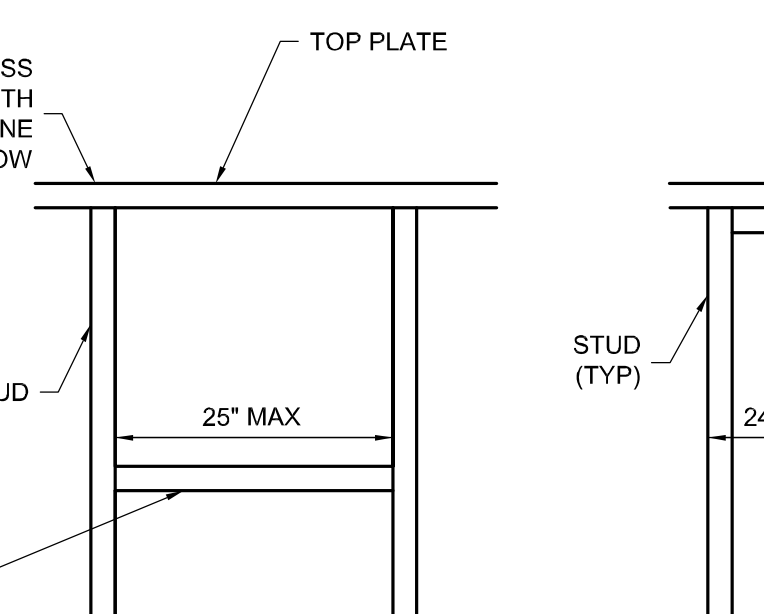
3-LOFT EAVE DETAIL



4-TRUSS SPLICE DETAIL

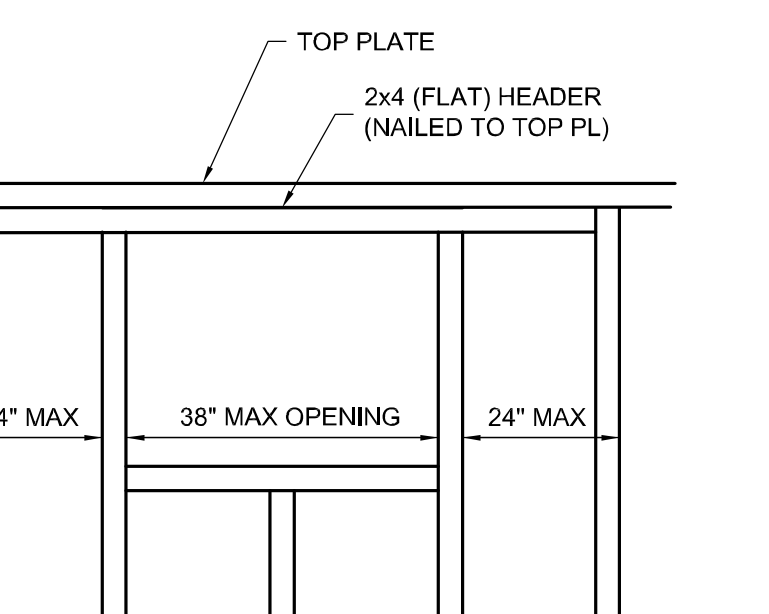


DETAIL @ ENDWALL

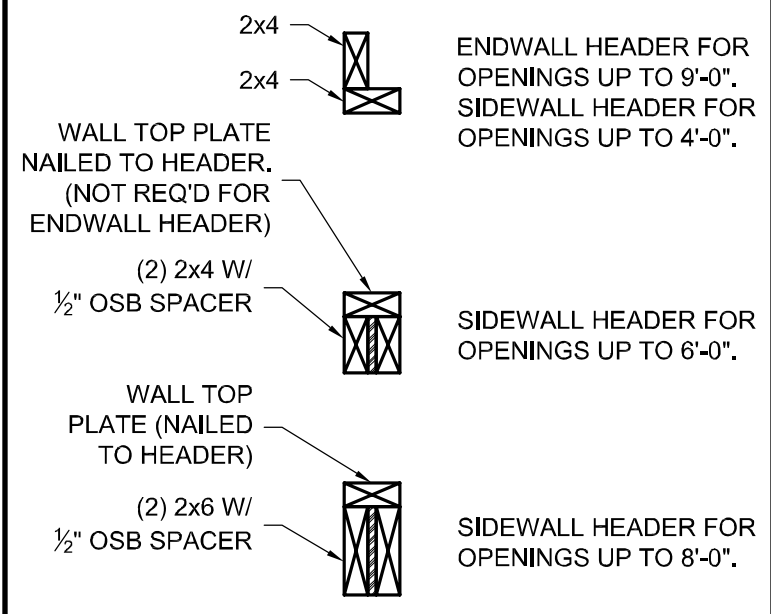


DETAIL @ SIDEWALL

5-TYP WINDOW/DOOR FRAMING



DETAIL @ SIDEWALL



NOTE: PROVIDE 2x4 CRIPPLE STUD UNDER EACH END OF HEADER

6-HEADER SCHEDULE



# LOFTED BARN



PROJECT NO:	
DATE:	09-13-2016
DRAWN BY:	KLN
CHECKED BY:	KLN
REVISION:	

SHEET NUMBER  
**S-4-LB-PA**  
SCALE: 1"=1'-0"